

LOC/DME I-GAD <b><u>108.35</u></b> Chan <b>20</b> (Y)	APP CRS <b>244°</b>	Rwy Ldg <b>6802</b> TDZE <b>560</b> Apt Elev <b>569</b>
---	------------------------	---

ILS or LOC RWY 24  
NORTHEAST ALABAMA RGNL (GAD)

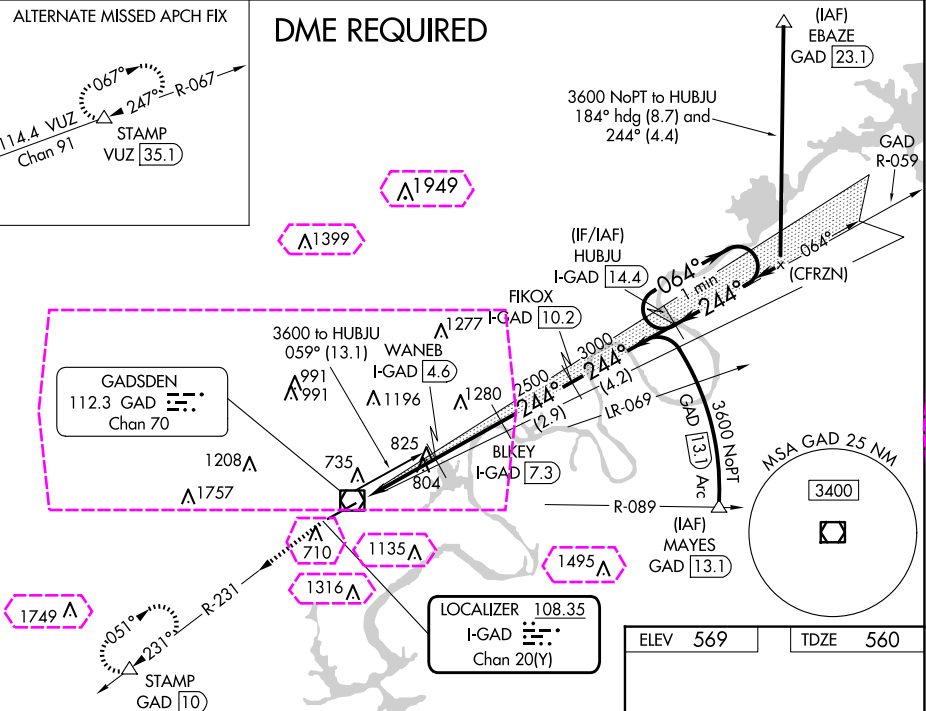
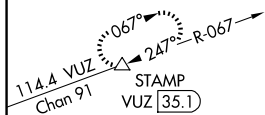
**T** DME required. VDP NA when using Anniston altimeter setting. When local altimeter setting not received, use Anniston altimeter setting and increase DA to 845 feet and all visibilities  $\frac{1}{4}$  SM; increase all MDAs 80 feet and visibility S-LOC Cats C and D  $\frac{1}{4}$  SM and Circling Cat C  $\frac{1}{2}$  SM.

**MISSED APPROACH:** Climb to 3600 on GAD VOR/DME R-231 to STAMP/GAD 10 DME and hold, continue climb-in-hold to 3600.

AWOS-3PT <b>127.825</b>	BIRMINGHAM APP CON <b>125.45 279.65</b>	CLNC DEL <b>120.05 257.7</b>	UNICOM <b>122.725 (CTAF) 0</b>
----------------------------	--	---------------------------------	-----------------------------------

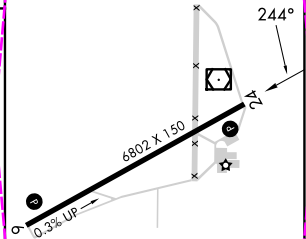
ALTERNATE MISSED APCH FIX

## DME REQUIRED



SE-4, 10 JUL 2025 to 07 AUG 2025

3600 ↑	GAD R-231	STAMP △	Use I-GAD DME when on the localizer course.		HUBJU I-GAD 14.4
*LOC only.	WANE I-GAD 4.6	2500	BIKEY I-GAD 7.3	FIKOX I-GAD 10.2	One Minute Holding Pattern
CATEGORY	A	B	C	D	
S-ILS 24	779- <sup>3</sup> / <sub>4</sub> 219 (300- <sup>3</sup> / <sub>4</sub> )				
S-LOC 24	1140-1 580 (600-1)	1140- <sup>13</sup> / <sub>4</sub> 580 (600-1 <sup>3</sup> / <sub>4</sub> )			
<b>C</b> CIRCLING	1140-1 571 (600-1)	1440-2 <sup>1</sup> / <sub>2</sub> 871 (900-2 <sup>1</sup> / <sub>2</sub> )	1680-3 1111 (1200-3)		



GADSDEN, ALABAMA  
Orig-C 27FEB20

NORTHEAST ALABAMA RGNL (GAD)  
ILS or LOC RWY 24

33°58'N-86°05'W

