

SMYRNA, TENNESSEE

AL-895 (FAA)

24193

WAAS CH 86632 W01A	APP CRS 006°	Rwy Idg 5546 TDZE 519 Apt Elev 543
--	------------------------	---

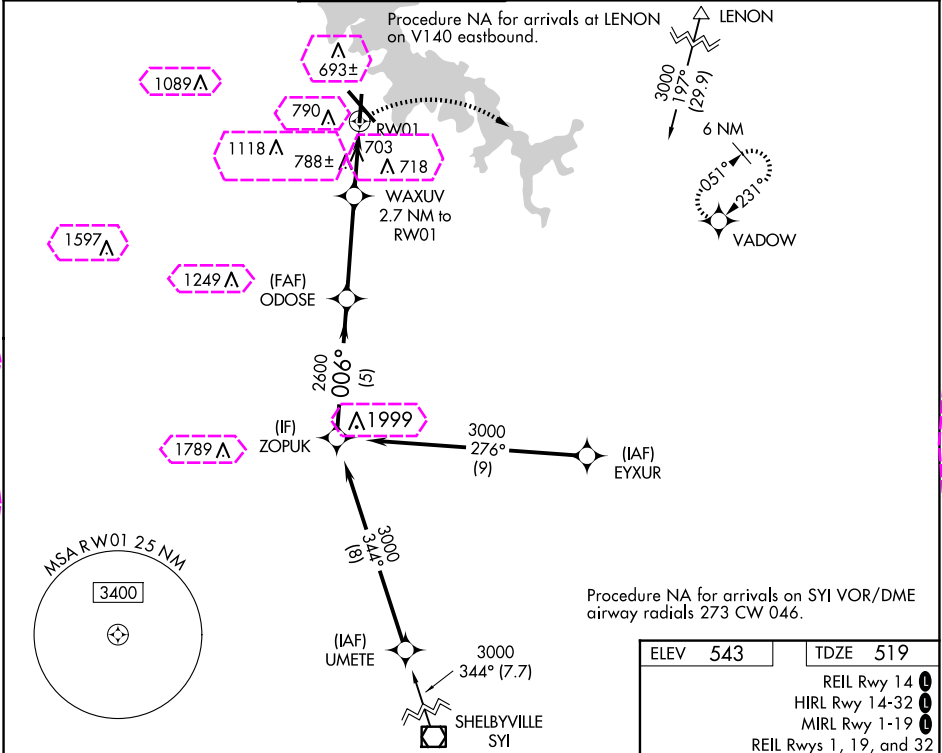
RNAV (GPS) RWY 1

SMYRNA (MQY)

⚠ DME/DME RNP-0.3 NA. When local altimeter setting not received, use Nashville Intl altimeter setting and increase all MDA 40. Helicopter visibility reduction below $\frac{3}{4}$ SM NA.

MISSED APPROACH: Climbing right turn to 3000 direct VADOW and hold.

AWOS-3PT 119.125	NASHVILLE APP CON 118.4 360.7	SMYRNA TOWER ★ 118.5 (CTAF) 233.1	GND CON 121.4	CLNC DEL 121.4	CLNC DEL 121.7 (When twr closed)	UNICOM 122.95
----------------------------	---	---	-------------------------	--------------------------	---	-------------------------



ZOPUK		VGS1 and descent angles not coincident (VGS1 Angle 3.00/TCH 27).		3000	VADOW
3000		ODOSE		WAXUV 2.7 NM to RW01	1.3 NM to RW01
006°		3.00° TCH 45		2600	
1420		5 NM		3.7 NM	1.4 NM
1.3					
CATEGORY	A	B	C	D	
LP MDA	960-1	441 (500-1)	960-1 $\frac{3}{8}$	441 (500-1 $\frac{3}{8}$)	
LNAV MDA	1100-1	581 (600-1)	1100-1 $\frac{3}{4}$	581 (600-1 $\frac{3}{4}$)	
CIRCLING	1100-1 557 (600-1)	1200-1 657 (700-1)	1240-2 697 (700-2)	1480-3 937 (1000-3)	

SMYRNA, TENNESSEE
Orig-A 21AUG14

36°01'N-86°31'W

SMYRNA (MQY)
RNAV (GPS) RWY 1

SE-1, 10 JUL 2025 to 07 AUG 2025

SE-1, 10 JUL 2025 to 07 AUG 2025

SMYRNA, TENNESSEE

AL-895 (FAA)

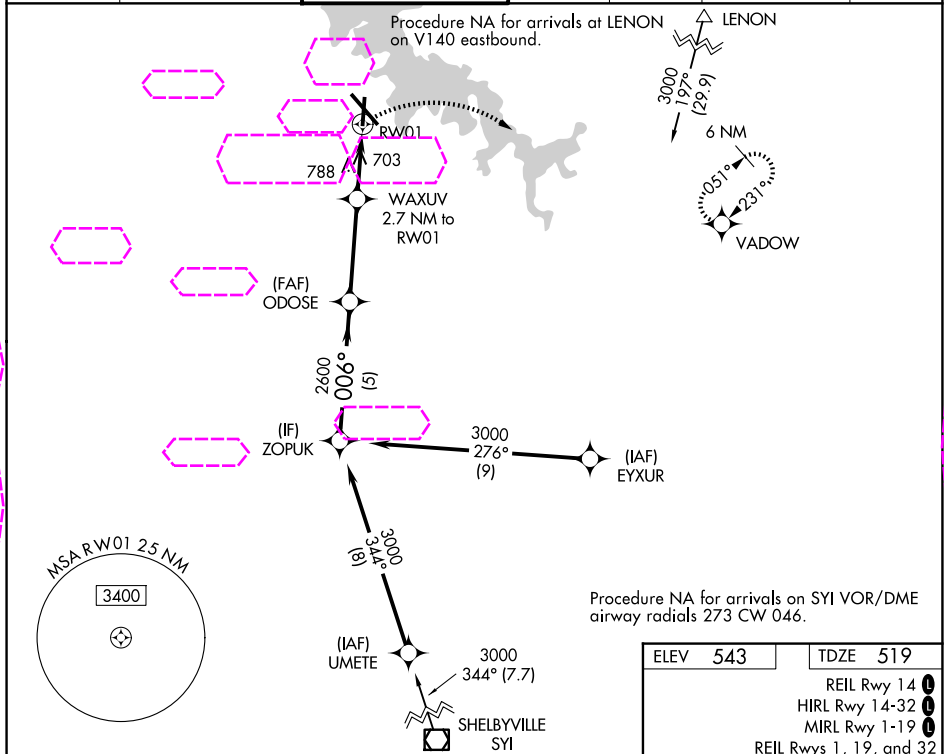
25219

WAAS CH 86632 W01A	APP CRS 006°	Rwy Ldg 5546 TDZE 519 Apt Elev 543
--	------------------------	---

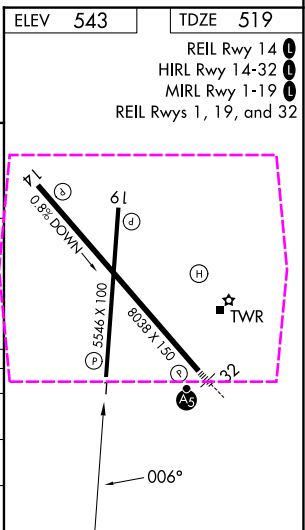
RNAV (GPS) RWY 1

SMYRNA (MQY)

<p>⚠ DME/DME RNP-0.3 NA. When local altimeter setting not received, use Nashville Intl altimeter setting and increase all MDA 40. Helicopter visibility reduction below $\frac{3}{4}$ SM NA.</p>				<p>MISSED APPROACH: Climbing right turn to 3000 direct VADOW and hold.</p>		
AWOS-3PT 119.125	NASHVILLE APP CON 118.4 360.7	SMYRNA TOWER ★ 118.5 (CTAF) 233.1	GND CON 121.4	CLNC DEL 121.4	CLNC DEL 121.7 (When twr closed)	UNICOM 122.95



ZOPUK		VGS1 and descent angles not coincident (VGS1 Angle 3.00/TCH 27).		3000		VADOW	
3000		006°		2600		1420	
5 NM		3.7 NM		1.4 NM		1.3	
CATEGORY	A	B	C	D			
LP MDA	960-1	441 (500-1)	960-1 $\frac{3}{8}$	441 (500-1 $\frac{3}{8}$)			
LNAV MDA	1100-1	581 (600-1)	1100-1 $\frac{3}{4}$	581 (600-1 $\frac{3}{4}$)			
CIRCLING	1100-1 557 (600-1)	1200-1 657 (700-1)	1240-2 697 (700-2)	1480-3 937 (1000-3)			



SMYRNA, TENNESSEE
Orig-A 21AUG14

36°01'N-86°31'W

RNAV (GPS) RWY 1