

SMYRNA, TENNESSEE

AL-895 (FAA)

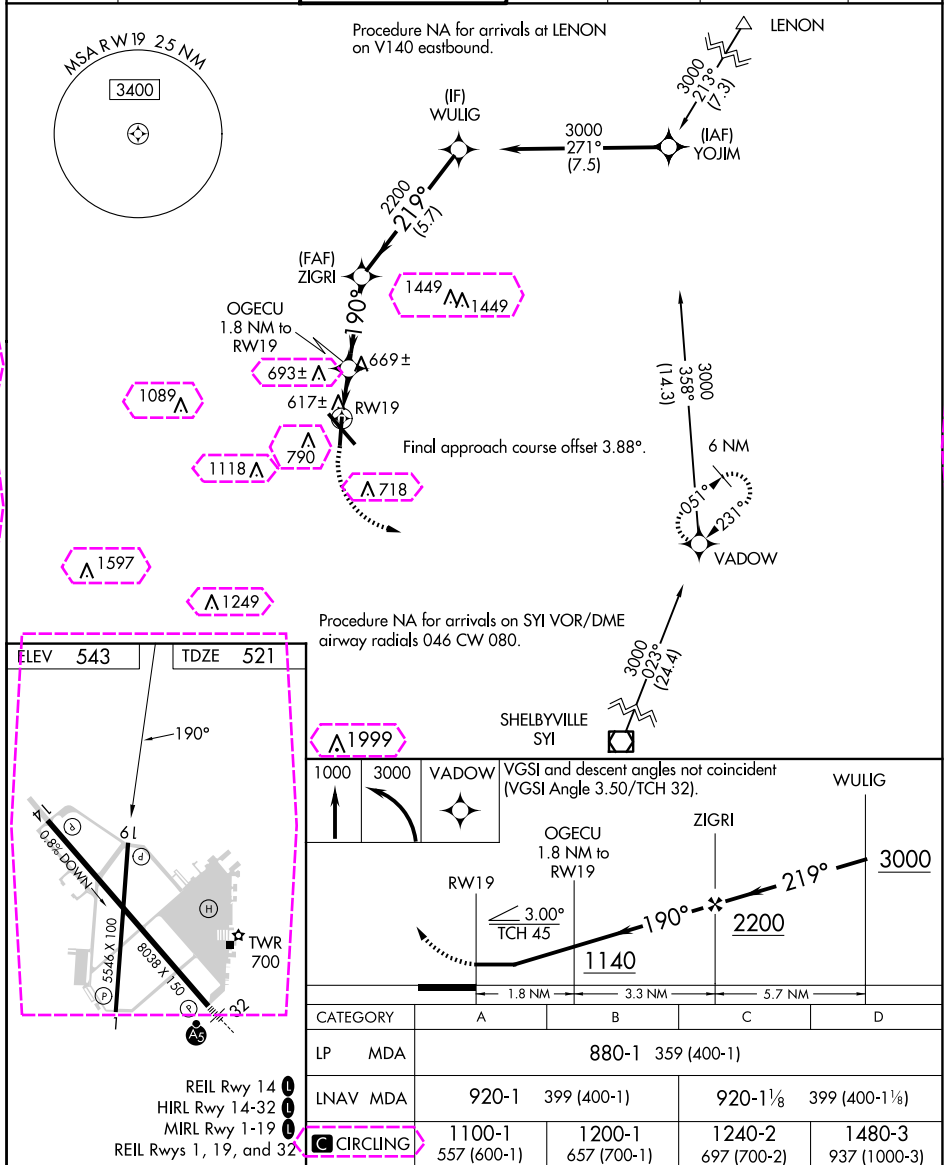
24193

WAAS CH 42932 W19A	APP CRS 190°	Rwy Idg 5546 TDZE 521 Apt Elev 543
--	------------------------	---

RNAV (GPS) RWY 19

SMYRNA (MQY)

⚠ DME/DME RNP-0.3 NA. Helicopter visibility reduction below $\frac{3}{4}$ SM NA. When local altimeter setting not received, use Nashville Intl altimeter setting and increase all MDA 40 feet and increase LP and LNAV Cat C/D visibility $\frac{1}{8}$ mile.		MISSED APPROACH: Climb to 1000 then climbing left turn to 3000 direct VADOW and hold.			
AWOS-3PT 119.125	NASHVILLE APP CON 118.4 360.7	SMYRNA TOWER ★ 118.5 (CTAF) 233.1	GND CON 121.4	CLNC DEL 121.4	CLNC DEL 121.7 (When twr closed)
UNICOM 122.95					



SMYRNA, TENNESSEE
Orig-B 04FEB16

36°01'N-86°31'W

SMYRNA (MQY)

RNAV (GPS) RWY 19

SE-1, 10 JUL 2025 to 07 AUG 2025

SE-1, 10 JUL 2025 to 07 AUG 2025

SMYRNA, TENNESSEE


AL-895 (FAA)

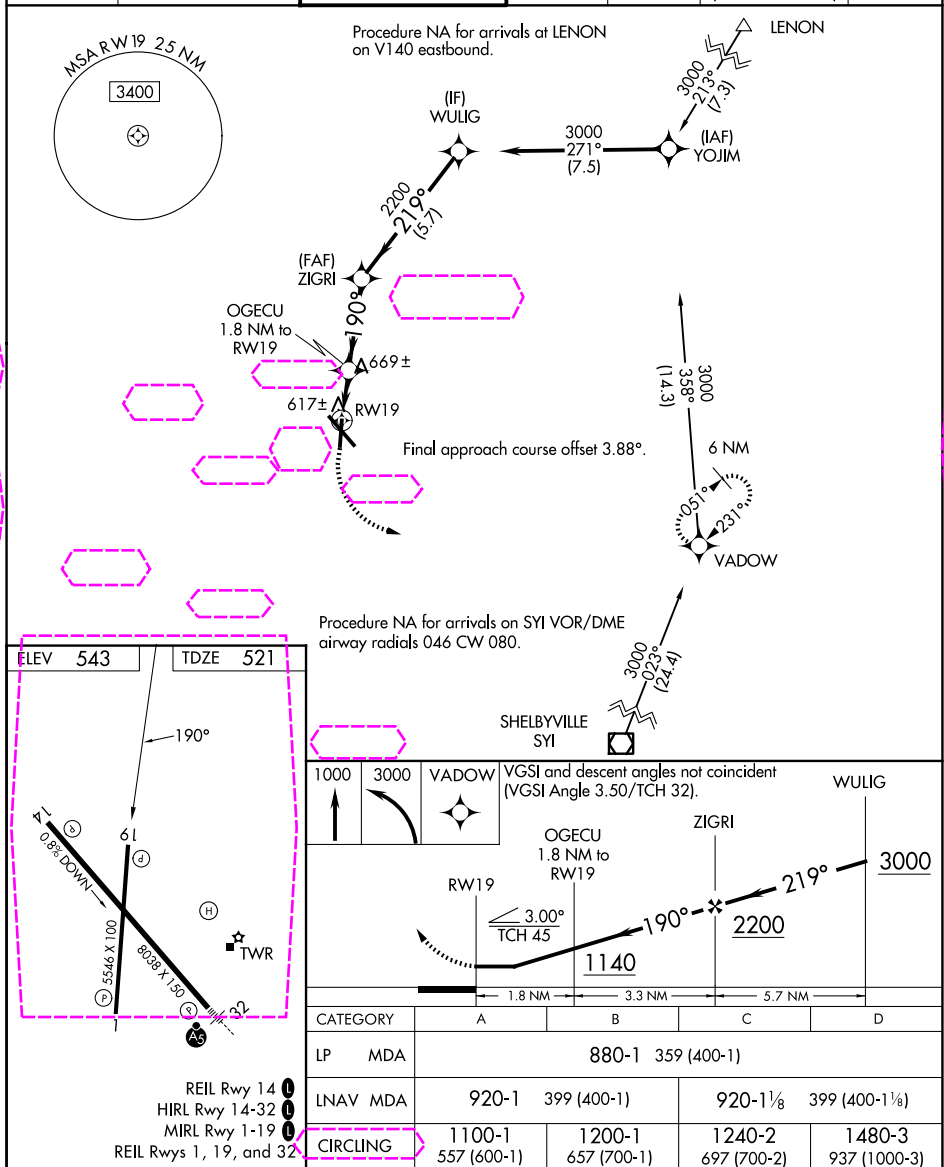
25219

WAAS CH 42932 W19A	APP CRS 190°	Rwy Ldg TDZE 521 Apt Elev 543
--	------------------------	---

RNAV (GPS) RWY 19

SMYRNA (MQY)

	DME/DME RNP-0.3 NA. Helicopter visibility reduction below ¾ SM NA. When local altimeter setting not received, use Nashville Intl altimeter setting and increase all MDA 40 feet and increase LP and LNAV Cat C/D visibility ⅛ mile.				MISSED APPROACH: Climb to 1000 then climbing left turn to 3000 direct VADOW and hold.	
	AWOS-3PT 119.125	NASHVILLE APP CON 118.4 360.7	SMYRNA TOWER ★ 118.5 (CTAF) 0 233.1	GND CON 121.4	CLNC DEL 121.4	CLNC DEL 121.7 (When twr closed)



SMYRNA, TENNESSEE

36°01'N-86°31'W

SMYRNA (MQY)

Orig-B 04FEB16

RNAV (GPS) RWY 19