

ILS or LOC RWY 32
SMYRNA (MQY)

	DME required.
--	---------------

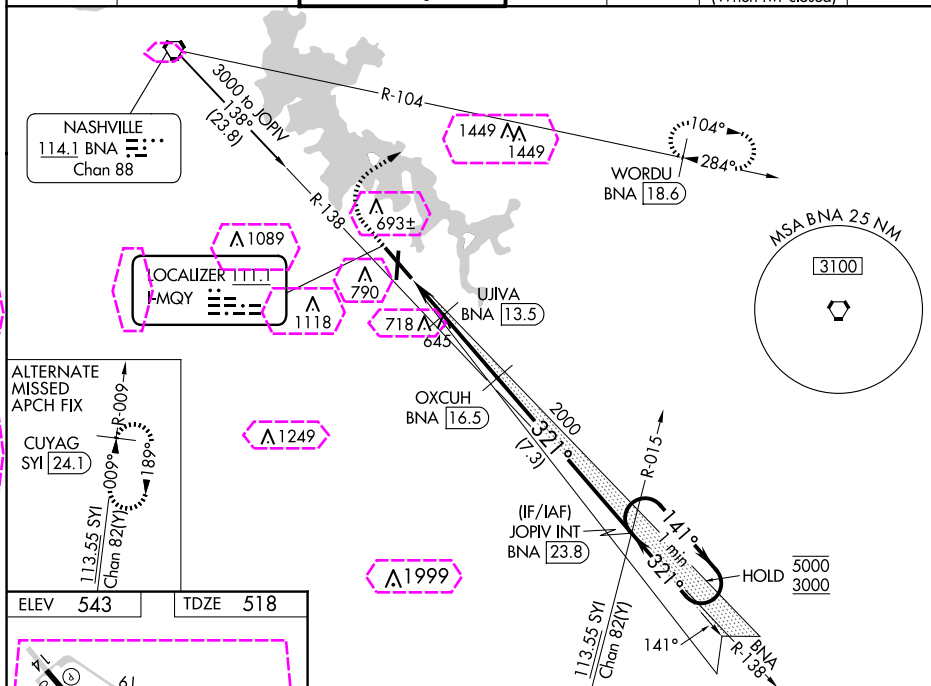
T
A NA Circling Rwy 14 NA at night. DME from BNA VORTAC, simultaneous reception of I-MQY and BNA DME required. For Inop ALS, increase S-LOC 32 Cats C/D visibility to 1 SM.

MALSR

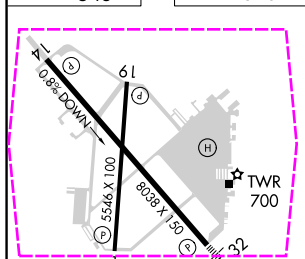


MISSED APPROACH: Climb to 1500 then climbing right turn to 3000 on heading 060° and on BNA VORTAC R-104 to WORDU/ BNA 18.6 DME and hold.

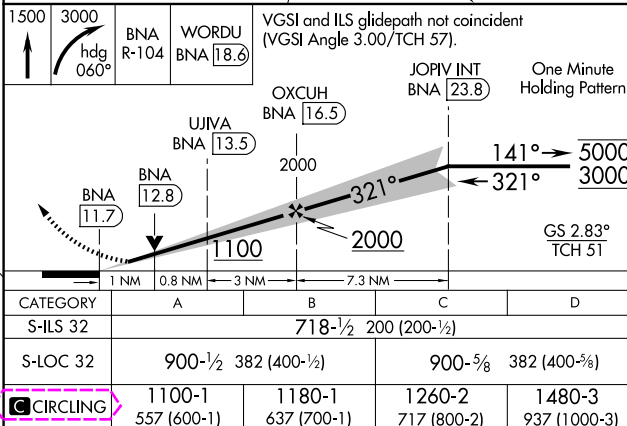
AWOS-3PT 119.125	NASHVILLE APP CON 118.4 360.7	SMYRNA TOWER ★ 118.5 (CTAF) 0 233.1	GND CON 121.4	CLNC DEL 121.4	CLNC DEL 121.7 (When twr closed)	UNICOM 122.95
---------------------	----------------------------------	--	------------------	-------------------	--	------------------



ELEV	543		TDZE	518
------	-----	--	------	-----



REIL Rwy 14 **L**
HIRL Rwy 14-32 **L**
MIRL Rwy 1-19 **L**
REIL Rwy 1, 19, and 32



SMYRNA, TENNESSEE

Amdt 7 17APR25

SMYRNA (MOY)

36°01'N-86°31'W

ILS or LOC RWY 32

SE-1, 10 JUL 2025 to 07 AUG, 2025

SE-1, 10 JUL 2025 to 07 AUG 2025

SMYRNA, TENNESSEE


AL-895 (FAA)

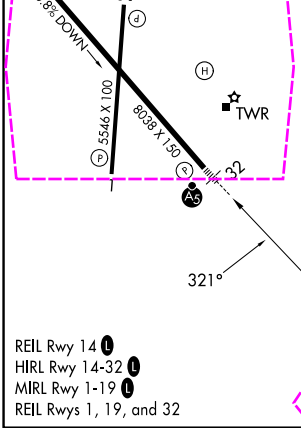
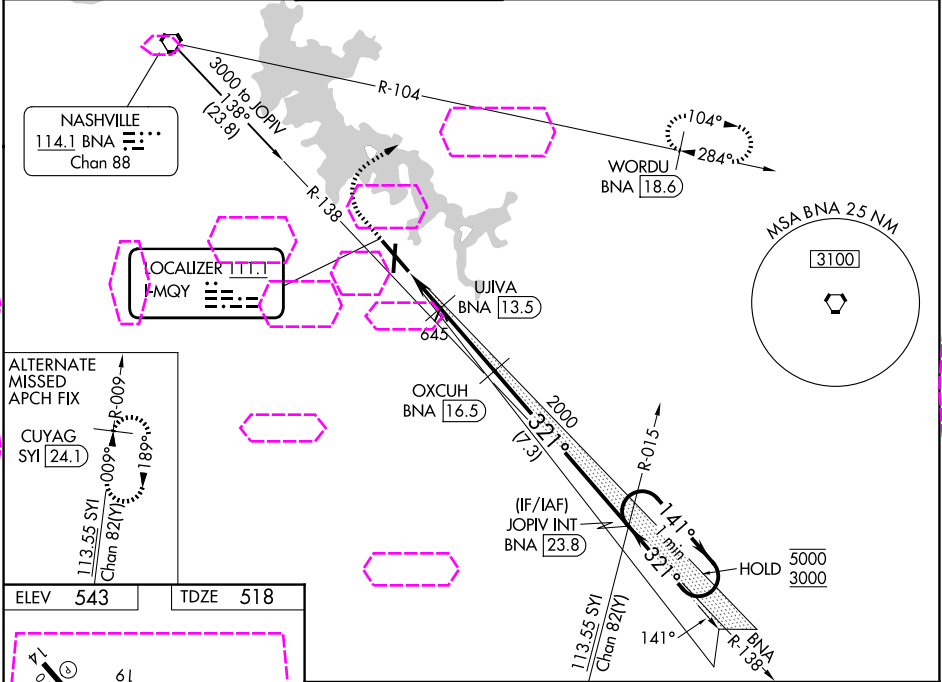
25219

LOC I-MQY 111.1	APP CRS 321°	Rwy Ldg 8038
		TDZE 518
		Apt Elev 543

ILS or LOC RWY 32

SMYRNA (MQY)

DME required.			<div>MALSR</div> <div></div>	<div>MISSED APPROACH: Climb to 1500 then climbing right turn to 3000 on heading 060° and on BNA VORTAC R-104 to WORDU/ BNA 18.6 DME and hold.</div>		
<div><div><div><div><div></div><div></div></div><div></div></div><div>NA</div></div><div>Circling Rwy 14 NA at night. DME from BNA VORTAC, simultaneous reception of I-MQY and BNA DME required. For Inop ALS, increase S-LOC 32 Cats C/D visibility to 1 SM.</div></div>						
<div>AWOS-3PT</div> <div>119.125</div>	<div>NASHVILLE APP CON</div> <div>118.4 360.7</div>	<div>SMYRNA TOWER ★</div> <div>118.5 (CTAF) 0 233.1</div>	<div>GND CON</div> <div>121.4</div>	<div>CLNC DEL</div> <div>121.4</div>	<div>CLNC DEL</div> <div>121.7</div> <div>(When twr closed)</div>	<div>UNICOM</div> <div>122.95</div>



1500 ↑		3000 hdg 060°		BNA R-104 WORDU BNA 18.6		VGSI and ILS glidepath not coincident (VGSI Angle 3.00/TCH 57).				One Minute Holding Pattern	
						OXCUH BNA 16.5		JOPIV INT BNA 23.8			
						UJIVA BNA 13.5					
						2000					
						1100					
						2000					
						1100					
						2000					
						1100					
						2000					
						1100					
						2000					
						1100					
						2000					
						1100					
						2000					
						1100					
						2000					
						1100					
						2000					
						1100					
						2000					
						1100					
						2000					
						1100					
						2000					
						1100					
						2000					
						1100					
						2000					
						1100					
						2000					
						1100					
						2000					
						1100					
						2000					
						1100					
						2000					
						1100					
						2000					
						1100					
						2000					
						1100					
						2000					
						1100					
						2000					
						1100					
						2000					
						1100					
						2000					
						1100					
						2000					
						1100					
						2000					
						1100					
						2000					
						1100					
						2000					
						1100					
						2000					
						1100					
						2000					
						1100					
						2000					
						1100					
						2000					
						1100					
						2000					
						1100					
						2000					
						1100					
						2000					
						1100					
						2000					
						1100					
						2000					
						1100					
						2000					
						1100					
						2000					
						1100					
						2000					
						1100					
						2000					
						1100					
						2000					
						1100					
						2000					
						1100					
						2000					
						1100					
						2000					
						1100					
						2000					
						1100					
						2000					
						1100					
						2000					
						1100					
						2000					
						1100					
						2000					
						1100					
						2000					
						1100					
						2000					
						1100					
						2000					
						1100					
						2000					
						1100					
						2000					
						1100					
						2000					
						1100					
						2000					
						1100					
						2000					
						1100					
						2000					
						1100					
						2000					
						1100					
						2000					
						1100					
						2000					
						1100					
						2000					
						1100					
						2000					
						1100					
						2000					
						1100					
						2000					
						1100					
						2000					
						1100					
						2000					
						1100					
						2000					
						1100					
						2000					
						1100					
						2000					
						1100					
						2000					
						1100					
						2000					
						1100					
						2000					
						1100					
						2000					
						1100					
						2000					
						1100					
						2000					
						1100					
						2000					
						1100					
						2000					
						1100					
						2000					
						1100					
						2000					
						1100					
						2000					
						1100					
						2000					
						1100					
						2000					
						1100					
						2000					
						1100					
						2000					
						1100					
						2000					
						1100					
						2000					
						1100					
						2000					
						1100					
						2000					
						1100					
						2000					
						1100					
						2000					
						1100					
						2000					
						1100					
						2000					
						1100					
						2000					
						1100					
						2000					
						1100					
						2000					
						1100					
						2000					
						1100					
						2000					
						1100					
						2000					
						1100					
						2000					
						1100					
						2000					
						1100					
						2000					
						1100					
						2000					
						1100					
						2000					
						1100					
						2000					
						1100					
						2000					
						1100					
						2000					
						1100					
						2000					
						1100					
						2000					
						1100					
						2000					
						1100					
						2000					
						1100					
						2000					
						1100					
						2000					
						1100					
						2000					
						1100					
						2000					
						1100					
						2000					
						1100					
						2000					
						1100					
						2000					
						1100					