

25107

AIRPORT DIAGRAM

AL-895 (FAA)

SMYRNA (MQY)

SMYRNA, TENNESSEE

AWOS-3PT

119.125

SMYRNA TOWER ✱

118.5 233.1

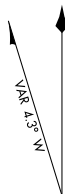
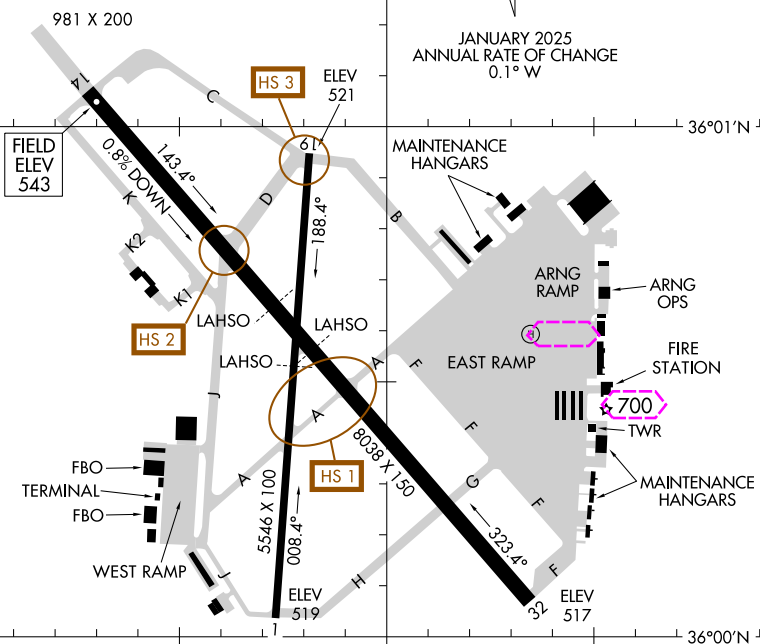
GND CON

121.4

CLNC DEL

121.4

121.7 (when tower closed)

JANUARY 2025
ANNUAL RATE OF CHANGE
0.1° W

RWY 01-19
PCN 125 F/A/W/T
S-30, D-90, 2D-150, 2D/2D2-250
RWY 14-32
PCN 71 F/A/W/T
S-95, D-160, 2D-175, 2D/2D2-250

CAUTION: BE ALERT TO RUNWAY CROSSING CLEARANCES.
READBACK OF ALL RUNWAY HOLDING INSTRUCTIONS IS REQUIRED.

86°32'W

86°31'W

AIRPORT DIAGRAM

25107

SMYRNA, TENNESSEE

SMYRNA (MQY)

SE-1, 10 JUL 2025 to 07 AUG 2025

SE-1, 10 JUL 2025 to 07 AUG 2025

25219

AIRPORT DIAGRAM

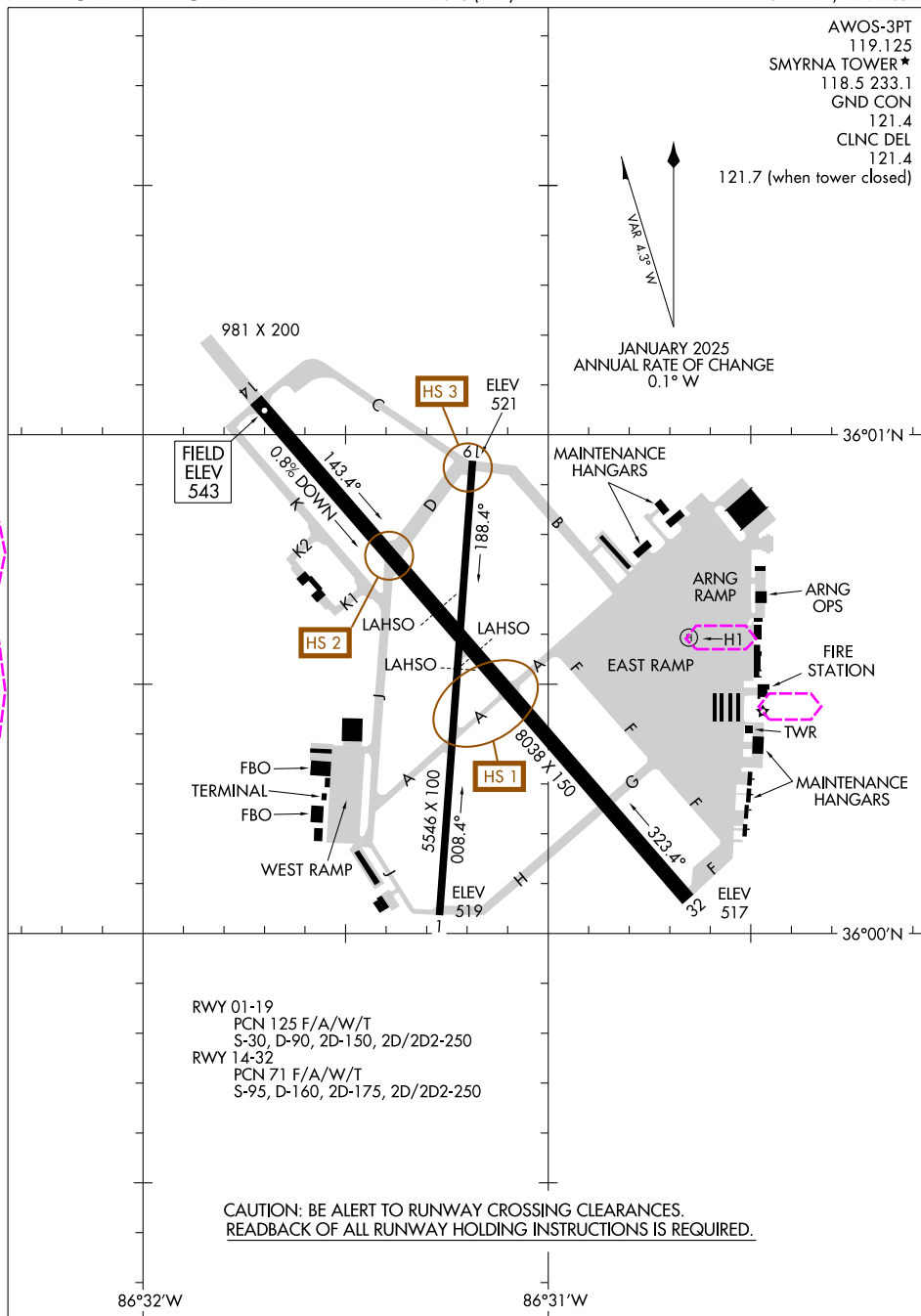
AL-895 (FAA)

SMYRNA (MQY)

SMYRNA, TENNESSEE

SE-1, 07 AUG 2025 to 04 SEP 2025

SE-1, 07 AUG 2025 to 04 SEP 2025



AIRPORT DIAGRAM

25219

SMYRNA, TENNESSEE

SMYRNA (MQY)