

VALDOSTA, GEORGIA

AL-892 (FAA)

24249

VOR/DME OTK	APP CRS	Rwy Idg	8002
114.8	338°	TDZE	200
Chan 95		Apt Elev	203

VOR RWY 36

VALDOSTA RGNL (VLD)

V

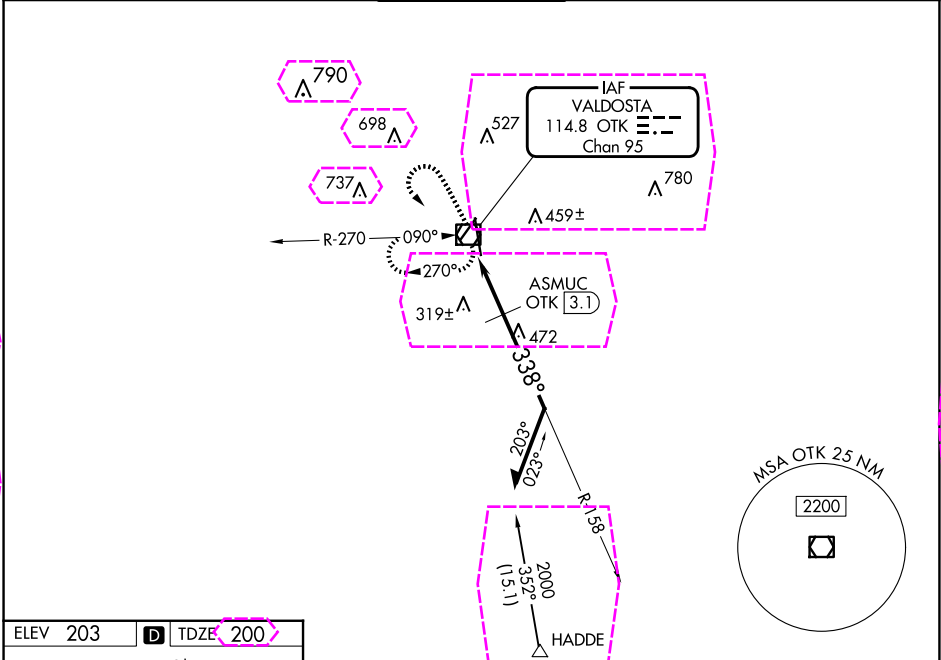
A

Rwy 36 helicopter visibility reduction below $\frac{3}{4}$ SM NA. For inop ALS, increase S-36 Cats A/B visibility to 1 SM and Cats C/D to 1 $\frac{1}{2}$ SM; ASMUC FIX MINIMUMS: increase S-36 all Cats visibility to 1 SM.

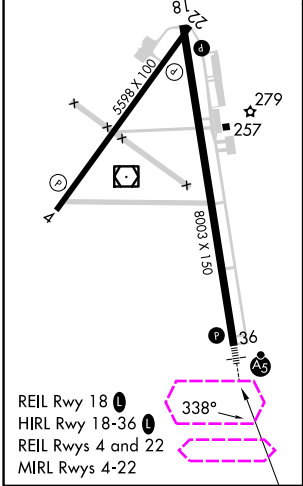
MALSR

MISSED APPROACH: Climb to 1200 then climbing left turn to 2000 direct OTK VOR/DME and hold, continue climb-in-hold to 2000.

ASOS	VALDOSTA APP CON *	VALDOSTA TOWER *	GND CON	UNICOM
126.225	126.6 285.6	128.35 (CTAF) 0	121.7	122.95



ELEV 203	D	TDZE 200
----------	---	----------



1200

2000

OTK

OTK VOR/DME

158°

338°

1800

780

1.9

3.1

1 NM

1.3 NM

Remain within 10 NM

CATEGORY	A	B	C	D
S-36	780- $\frac{3}{4}$	580 (600- $\frac{3}{4}$)	780-1 $\frac{1}{4}$	580 (600-1 $\frac{1}{4}$)
CIRCLING	780-1	577 (600-1)	900-2 697 (700-2)	1020-2 $\frac{3}{4}$ 817 (900-2 $\frac{3}{4}$)
ASMUC FIX MINIMUMS				
S-36		580- $\frac{3}{4}$	380 (400- $\frac{3}{4}$)	
CIRCLING	640-1 437 (500-1)	700-1 497 (500-1)	900-2 697 (700-2)	1020-2 $\frac{3}{4}$ 817 (900-2 $\frac{3}{4}$)

VALDOSTA, GEORGIA
Amdt 1C 25JAN24

30°47'N-83°17'W

VALDOSTA RGNL (VLD)
VOR RWY 36


SE-4, 10 JUL 2025 to 07 AUG 2025

SE-4, 10 JUL 2025 to 07 AUG 2025

VOR/DME OTK 114.8 Chan 95	APP CRS 338°	Rwy Ldg 8002 TDZE 201 Apt Elev 203
---	------------------------	---

VOR RWY 36
VALDOSTA RGNL (VLD)

A Rwy 36 helicopter visibility reduction below 1 SM NA. For inop ALS, increase S-36 Cats C and D visibility to 1% SM. ASUMUC fix minimums: increase S-36 C and D visibility to 1½ SM. Circling Rwy 4 and 22 NA at night. Inop table does not apply to S-36 Cats A and B and ASUMUC fix minimums: Cat A and B. Straight-in and Circling Rwy 36 NA at night.

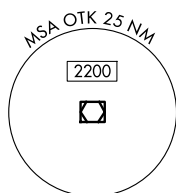
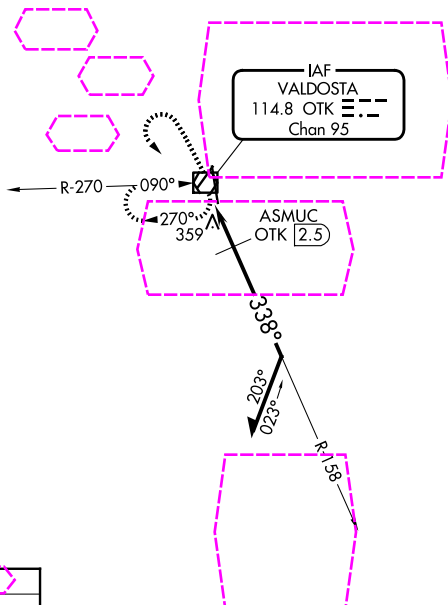
<p>MALSR</p> 	<p>MISSED APPROACH: Climb to 1200 then climbing left turn to 2000 direct OTK VOR/DME and hold, continue climb-in-hold to 2000.</p>
--	---

ASOS
126,225

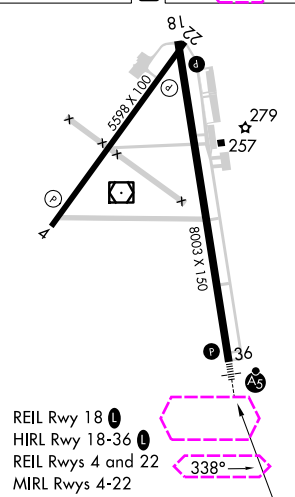
VALDOSTA APP CON ★
126.6 285.6

VALDOSTA TOWER ★
128.35 (CTAF) L

GND CON
121.7

UNICOM
122.95

ELEV	203	D	TDZE	201
------	-----	----------	------	-----



CATEGORY	A	B	C	D
S-36	780-1	579 (600-1)	780-1 1/4	579 (600-1 1/4)
CIRCLING	780-1	577 (600-1)	900-2 697 (700-2)	1020-2 3/4 817 (900-2 3/4)

ASMUC FIX MINIMUMS

S-36	620-1	419 (500-1)
CIRCLING	660-1 457 (500-1)	700-1 497 (500-1)

VALDOSTA, GEORGIA
Amdt 2 07AUG25

30°47'N-83°17'W

VALDOSTA RGNL (VLD)
VOR RWY 36

SE-4, 07 AUG 2025 to 04 SEP 2025