

VALDOSTA, GEORGIA

AL-892 (FAA)

24249

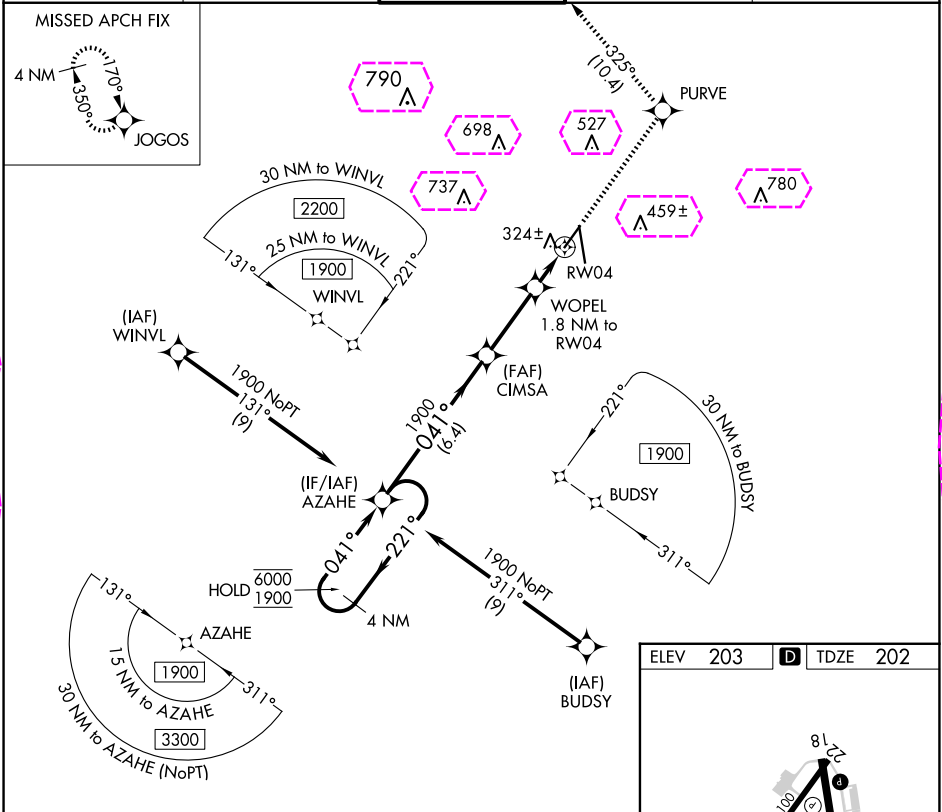
APP CRS	Rwy Idg	5598
041°	TDZE	202
	Apt Elev	203

RNAV (GPS) RWY 4

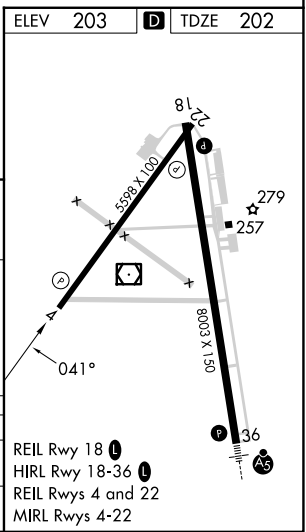
VALDOSTA RGNL (VLD)

RNP APCH - GPS.	MISSED APPROACH: Climb to 3000 direct PURVE and on track 325° to JOGOS and hold.
Rwy 4 helicopter visibility reduction below 3/4 SM NA.	

ASOS 126.225	VALDOSTA APP CON * 126.6 285.6	VALDOSTA TOWER * 128.35 (CTAF)	GND CON 121.7	UNICOM 122.95
-----------------	-----------------------------------	-----------------------------------	------------------	------------------



4 NM Holding Pattern	AZAHE	CIMSA	3000	PURVE	Ir 325°	JOGOS
6000 ← 221°	041° →	1900	WOPEL 1.8 NM to RW04	1 NM to RW04		
1900			3.25° TCH 52	860		
	6.4 NM	3 NM	0.8 NM	1 NM		
CATEGORY	A	B	C	D		
LNNAV MDA	580-1 378 (400-1)					
CIRCLING	640-1 437 (500-1)	700-1 497 (500-1)	900-2 697 (700-2)	1020-2 3/4 817 (900-2 3/4)		



VALDOSTA, GEORGIA
Amdt 2 25JAN24

30°47'N-83°17'W

VALDOSTA RGNL (VLD)
RNAV (GPS) RWY 4

VALDOSTA, GEORGIA

AL-892 (FAA)

25219

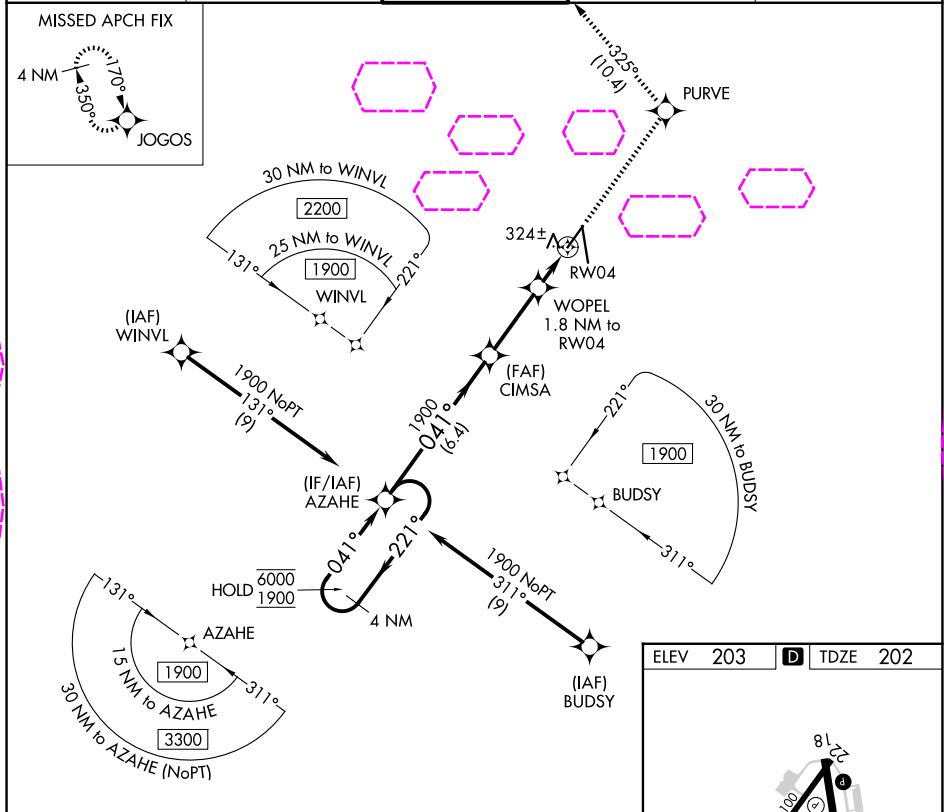
APP CRS	Rwy Ldg	5598
041°	TDZE	202
	Apt Elev	203

RNAV (GPS) RWY 4

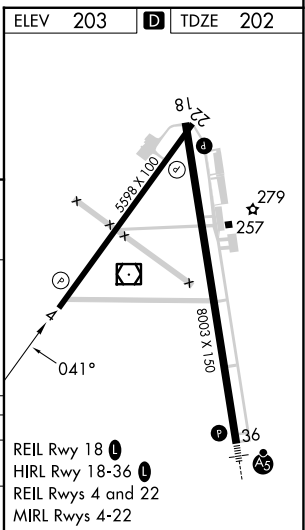
VALDOSTA RGNL (VLD)

RNP APCH - GPS.	MISSED APPROACH: Climb to 3000 direct PURVE and on track 325° to JOGOS and hold.
Rwy 4 helicopter visibility reduction below 3/4 SM NA.	

ASOS 126.225	VALDOSTA APP CON * 126.6 285.6	VALDOSTA TOWER * 128.35 (CTAF)	GND CON 121.7	UNICOM 122.95
-----------------	-----------------------------------	-----------------------------------	------------------	------------------



4 NM Holding Pattern	AZAHE	CIMSA	3000	PURVE	Ir 325°	JOGOS
6000 ← 221°	041° →	1900	WOPEL 1.8 NM to RW04	1 NM to RW04		
1900			3.25° TCH 52	860		
	6.4 NM	3 NM	0.8 NM	1 NM		
CATEGORY	A	B	C	D		
LNNAV MDA		580-1	378 (400-1)			
CIRCLING	640-1 437 (500-1)	700-1 497 (500-1)	900-2 697 (700-2)	1020-2 3/4 817 (900-2 3/4)		



VALDOSTA, GEORGIA
Amdt 2 25JAN24

30°47'N-83°17'W

RNAV (GPS) RWY 4

SE-4, 07 AUG 2025 to 04 SEP 2025

SE-4, 07 AUG 2025 to 04 SEP 2025