

VALDOSTA, GEORGIA

AL-892 (FAA)

24249

WAAS CH 86206 W36A	APP CRS 356°	Rwy Idg 8002 TDZE 200 Apt Elev 203
--	------------------------	---

RNAV (GPS) RWY 36
VALDOSTA RGNL (VLD)

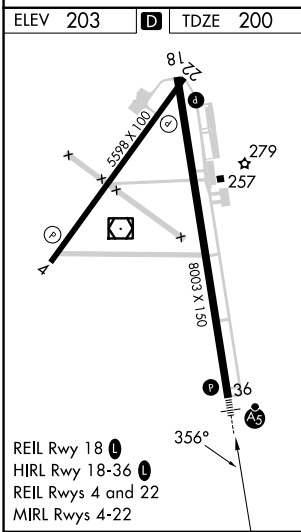
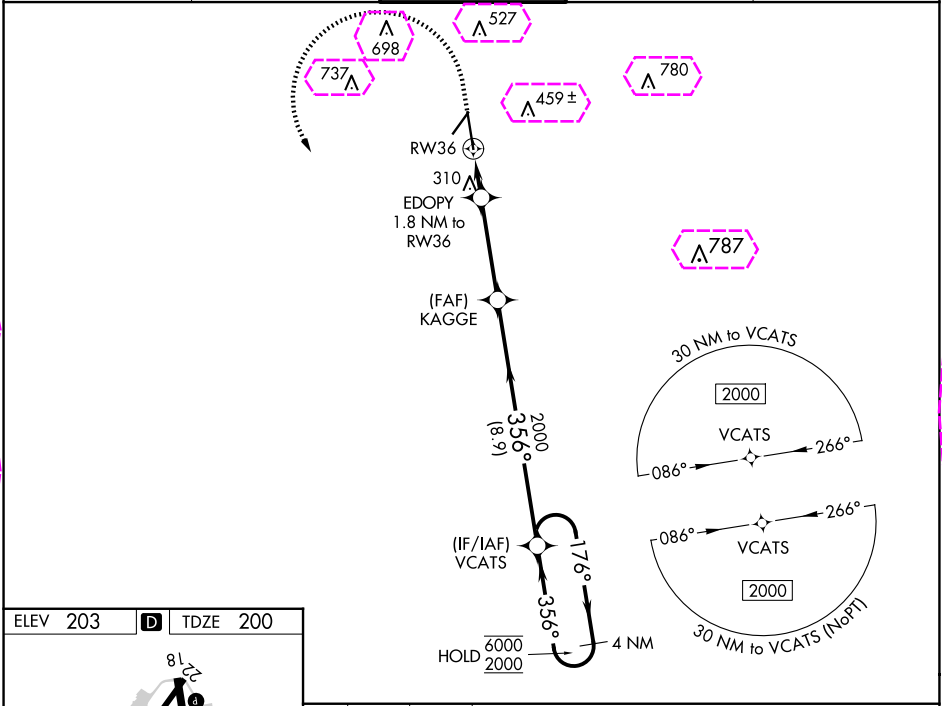
RNP APCH - GPS.

For uncompensated Baro-VNAV systems, LNAV/VNAV NA below -4°C or above 54°C. Rwy 36 helicopter visibility reduction below ¾ SM NA. For inop ALS, increase LPV and LNAV/VNAV all Cats visibility to ¾ SM and LNAV all Cats visibility to 1 SM.

MALSR

MISSED APPROACH: Climb to 700 then climbing left turn to 2000 direct VCATS and hold.

ASOS 126.225	VALDOSTA APP CON ★ 126.6 285.6	VALDOSTA TOWER ★ 128.35 (CTAF) 0	GND CON 121.7	UNICOM 122.95
------------------------	--	--	-------------------------	-------------------------



	700	2000	VCATS	
		EDOPY 1.8 NM to RW36	KAGGE 2000	VCATS 4 NM Holding Pattern
		1 NM to RW36	356°	176° → 6000 ← 356° 2000
		820	2000	GP 3.00° TCH 53
	1 NM	0.8 NM	3.7 NM	8.9 NM
CATEGORY	A	B	C	D
LPV DA	489-¾ 289 (300-¾)			
LNAV/VNAV DA	482-¾ 282 (300-¾)			
LNAV MDA	560-¾ 360 (400-¾)			
CIRCLING	640-1 437 (500-1)	700-1 497 (500-1)	900-2 697 (700-2)	1020-2¾ 817 (900-2¾)

VALDOSTA, GEORGIA
Amdt 2 25JAN24

30°47'N-83°17'W

VALDOSTA RGNL (VLD)
RNAV (GPS) RWY 36

SE-4, 10 JUL 2025 to 07 AUG 2025

SE-4, 10 JUL 2025 to 07 AUG 2025

VALDOSTA, GEORGIA

AL-892 (FAA)

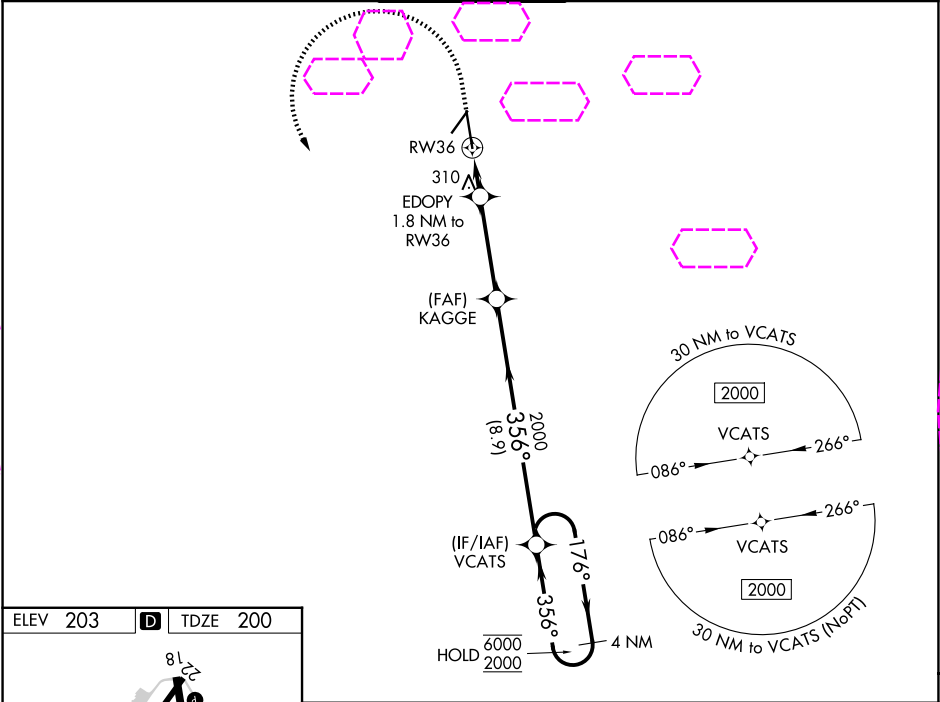
25219

WAAS CH 86206 W36A	APP CRS 356°	Rwy Ldg 8002 TDZE 200 Apt Elev 203
--	------------------------	---

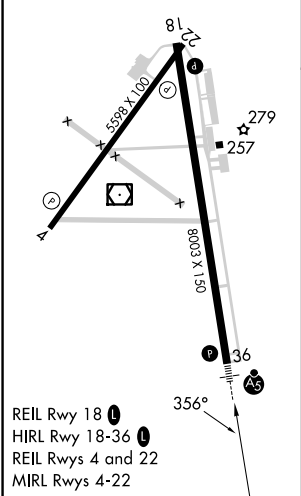
RNAV (GPS) RWY 36
VALDOSTA RGNL (VLD)




RNP APCH - GPS.		MALSR	MISSED APPROACH: Climb to 700 then climbing left turn to 2000 direct VCATS and hold.
▼ ▲ For uncompensated Baro-VNAV systems, LNAV/VNAV NA below -4°C or above 54°C. Rwy 36 helicopter visibility reduction below ¾ SM NA. For inop ALS, increase LPV and LNAV/VNAV all Cats visibility to ¾ SM and LNAV all Cats visibility to 1 SM.		AS	

ASOS 126.225	VALDOSTA APP CON ★ 126.6 285.6	VALDOSTA TOWER ★ 128.35 (CTAF) 0	GND CON 121.7	UNICOM 122.95
------------------------	--	--	-------------------------	-------------------------



ELEV 203	D	TDZE 200
----------	---	----------



700	2000	VCATS				
						

VALDOSTA, GEORGIA
Amdt 2 25JAN24

30°47'N-83°17'W

VALDOSTA RGNL (VLD)
RNAV (GPS) RWY 36

SE-4, 07 AUG 2025 to 04 SEP 2025

SE-4, 07 AUG 2025 to 04 SEP 2025