
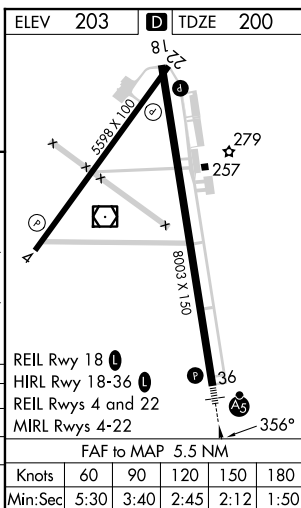


ILS or LOC RWY 36
VALDOSTA RGNL (VLD)

<p>MALSR</p> 	<p>MISSED APPROACH: Climb to 1200 then climbing left turn to 2000 on heading 231° and GEF R-051 to GEF VORTAC and hold.</p>
------------------------------------------------------------------------------------------------	------------------------------------------------------------------------------------------------------------------------------------

UNICOM
122.95

Knots	60	90	120	150	180
Min:Sec	5:30	3:40	2:45	2:12	1:50

VALDOSTA RGNL (VLD)
ILS or LOC RWY 36

VALDOSTA, GEORGIA

AL-892 (FAA)

25219

LOC I-VLD 110.9	APP CRS 356°	Rwy Ldg 8002 TDZE 200 Apt Elev 203
---------------------------	------------------------	------------------------------------------------------------------------

ILS or LOC RWY 36

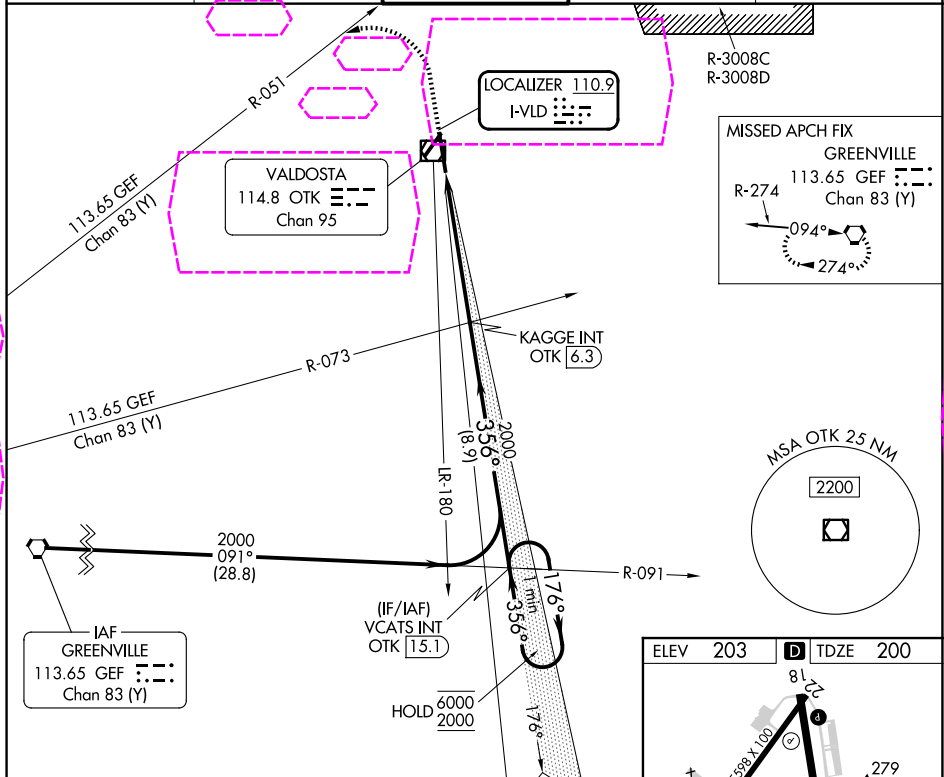
VALDOSTA RGNL (VLD)

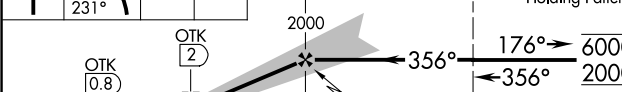
⚠ Rwy 36 helicopter visibility reduction below $\frac{3}{4}$ SM NA. DME from OTK VOR/DME. DME use requires simultaneous reception of I-VLD and OTK DME. For inop ALS, increase S-ILS 36 all Cats visibility to $\frac{1}{8}$ SM, increase S-LOC 36 Cats A and B visibility to 1 SM and Cat E visibility to $\frac{1}{4}$ SM.

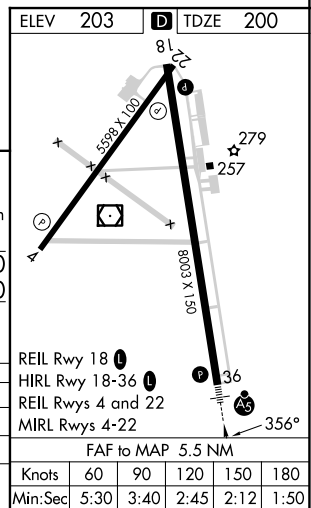
MALSR

MISSED APPROACH: Climb to 1200 then climbing left turn to 2000 on heading 231° and GEF R-051 to GEF VORTAC and hold.

ASOS 126.225	VALDOSTA APP CON ★ 126.6 285.6	VALDOSTA TOWER ★ 128.35 (CTAF)	GND CON 121.7	UNICOM 122.95
------------------------	------------------------------------------	------------------------------------------	-------------------------	-------------------------



1200 ↑	2000 hdg 231°	GEF R-051	GEF			
 <p>The diagram shows a flight path starting from the left, passing through several navigation points. The first point is OTK 0.8, followed by a distance of 1.2 NM to OTK 2. From OTK 2, the path continues for 4.3 NM to KAGGE INT OTK 6.3. From there, it goes for 8.9 NM to VCATS INT OTK 15.1. The path then turns right to a heading of 176° and continues for 6.0 NM to a point labeled 2000. A shaded area indicates a holding pattern. The diagram also shows a heading of 356° and a distance of 3.0 NM to a point labeled 2000. The diagram is labeled 'One Minute Holding Pattern' and 'GS 3.00° TCH 53'.</p>				One Minute Holding Pattern		
CATEGORY	A		B	C	D	E
S-ILS 36			489- ³ / ₄	289 (300- ³ / ₄)		
S-LOC 36			640- ³ / ₄	440 (500- ³ / ₄)		
CIRCLING	640-1 437 (500-1)	700-1 497 (500-1)	900-2 697 (700-1)	1020-2 ³ / ₄ 817 (900-2 ³ / ₄)	1040-3 837 (900-3)	



VALDOSTA, GEORGIA
Amdt 8 25JAN24

30°47'N-83°17'W

VALDOSTA RGNL (VLD)
ILS or LOC RWY 36

SE-4, 07 AUG 2025 to 04 SEP 2025

SE-4, 07 AUG 2025 to 04 SEP 2025