

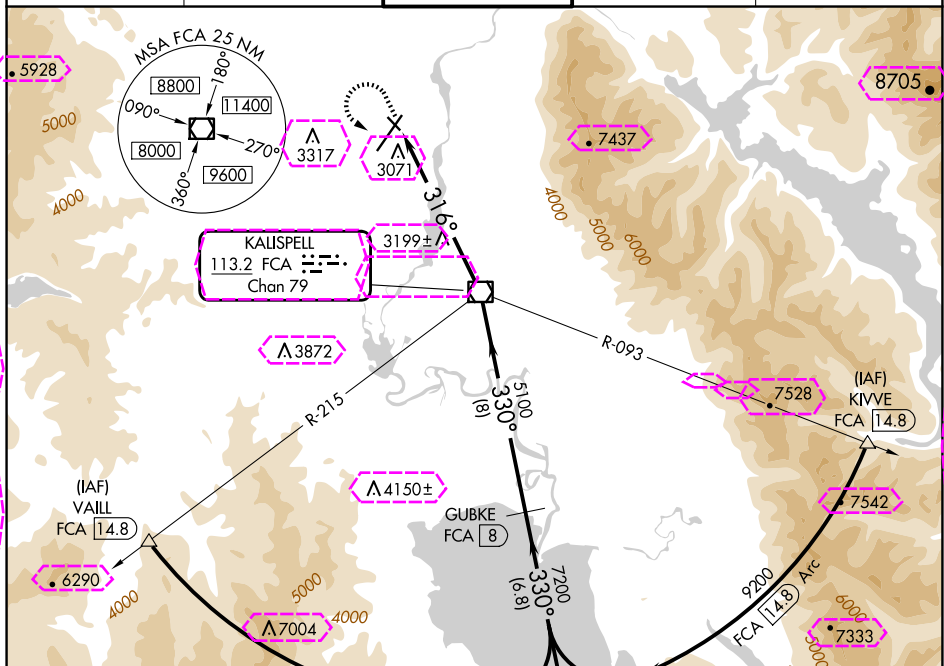
VOR/DME FCA 113.2 Chan 79	APP CRS 316°	Rwy Idg 3510 TDZE 2974 Apt Elev 2977
---	------------------------	---

VOR/DME RWY 30
GLACIER PARK INTL (GPI)

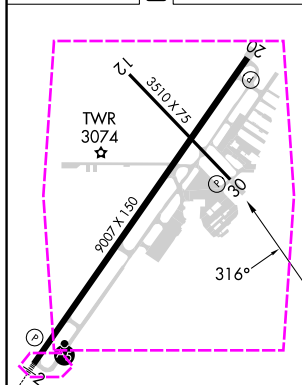
Rwy 30 helicopter visibility reduction
below $\frac{3}{4}$ SM NA.

MISSED APPROACH: Climb to 4000 then climbing left turn to 9300 via heading 130° and FCA VOR/DME R-150 to ITONE/14.8 DME and hold, continue climb-in-hold to 9300.

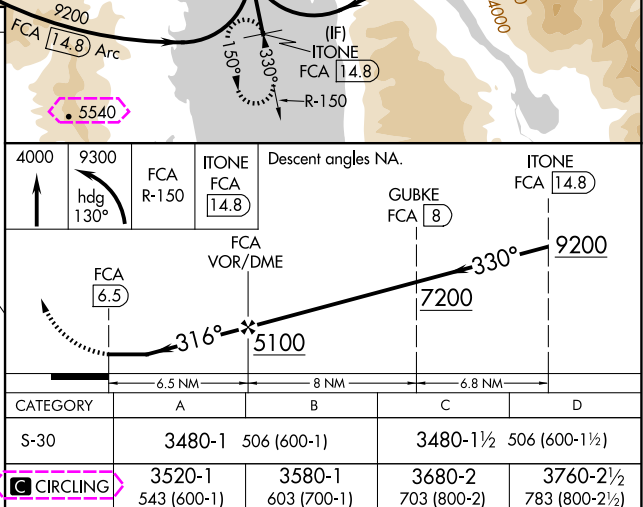
ATIS 132.625	SALT LAKE CENTER 127.075 244.875	GLACIER TOWER* 124.55 (CTAF) 0	GND CON 121.6	UNICOM 122.95
-----------------	-------------------------------------	-----------------------------------	------------------	------------------



ELEV 2977	D	TDZE 2974
-----------	----------	-----------



REIL Rwy 20 **L**
MIRL Rwy 12-30 **L**
HIRL Rwy 2-20



KALISPELL, MONTANA

AL-887 (FAA)

25219

VOR/DME FCA 113.2 Chan 79	APP CRS 316°	Rwy Ldg TDZE Apt Elev 2977
---	------------------------	---

VOR/DME RWY 30

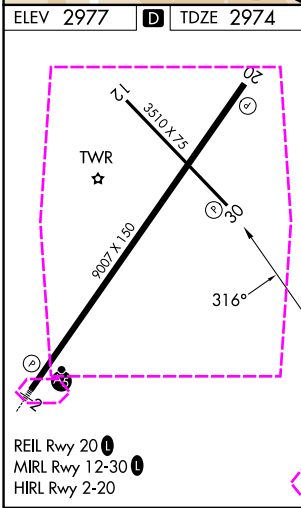
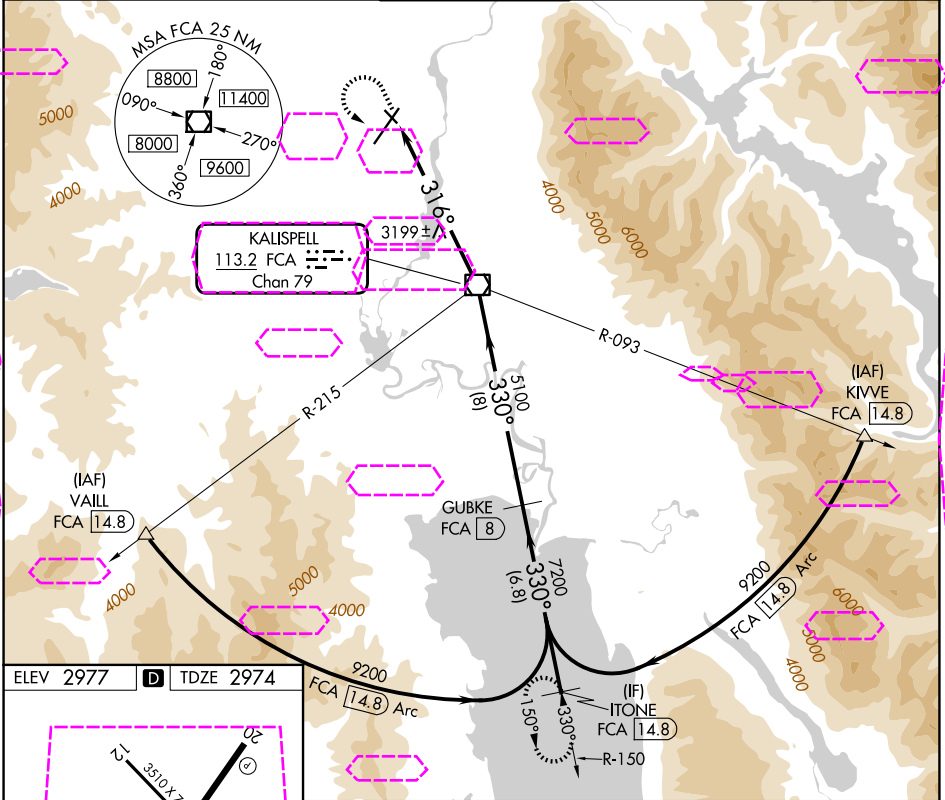
GLACIER PARK INTL (GPI)

⚠ Rwy 30 helicopter visibility reduction below $\frac{3}{4}$ SM NA.

⚠ **-14°C**

MISSED APPROACH: Climb to 4000 then climbing left turn to 9300 via heading 130° and FCA VOR/DME R-150 to ITONE/14.8 DME and hold, continue climb-in-hold to 9300.

ATIS 132.625	SALT LAKE CENTER 127.075 244.875	GLACIER TOWER★ 124.55 (CTAF) 0	GND CON 121.6	UNICOM 122.95
------------------------	--	--	-------------------------	-------------------------



4000	9300	FCA R-150	ITONE FCA 14.8	Descent angles NA.	ITONE FCA 14.8
↑	hdg 130°				
		FCA VOR/DME			
		316°	5100	330°	9200
		6.5 NM	8 NM	6.8 NM	
CATEGORY	A	B	C	D	
S-30	3480-1	506 (600-1)	3480-1½	506 (600-1½)	
CIRCLING	3520-1 543 (600-1)	3580-1 603 (700-1)	3680-2 703 (800-2)	3760-2½ 783 (800-2½)	

KALISPELL, MONTANA
Amdt 10C 17APR25

48°19'N-114°15'W

VOR/DME RWY 30

GLACIER PARK INTL (GPI)