

WAAS CH 70799 W02A	APP CRS 020°	Rwy Idg 9007 TDZE 2966 Apt Elev 2977
--	------------------------	---

RNAV (GPS) Z RWY 2
GLACIER PARK INTL (GPI)

RNP APCH - GPS.	
-----------------	--

T For uncompensated Baro-VNAV systems, LNAV/VNAV NA below -24°C or above 54°C. For inop ALS, increase LNAV/VNAV all Cats visibility, and LNAV Cats C and D visibility to 1³/₈ SM.

MALSR
A5

MISSED APPROACH: (Do not exceed 185K until CUBTO) Climb to 4200 then climbing left turn 9200 direct MAGDN and on track 299° to CUBTO and hold, continue climb-in-hold to 9200.

ATIS 132.625	SALT LAKE CENTER 127.075 244.875	GLACIER TOWER ★ 124.55 (CTAF) 0	GND CON 121.6	UNICOM 122.95
-----------------	-------------------------------------	------------------------------------	------------------	------------------

MISSED APCH FIX

CUBTO

11.9°

7 NM

29.9°

29.9°

(13.4)

MAGDN

(not to scale)

MSA RW02 25 NM

11300

6709

6763

9000 NoPT 080° (23.1)

(IAF) OLIBY

Procedure NA for arrivals at OLIBY on V448 westbound.

[illegible]

7 NM Holding Pattern

GOGGS

AVDIH

JALPA

KALGE

RW02

14000

9000

7300

5800

3880

200°

020°

020°

GP 3.00°

TCH 51

7.2 NM


5.1 NM

4 NM

1.4 NM

1.3 NM

4200	9200	MAGDN	tr 299°	CUBTO
↑	↪	⊙	⊙	⊙

CATEGORY		A	B	C	D
LPV	DA	3166-½ 200 (200-½)			
INAV/ VNAV	DA	3468-1 502 (500-1)			
INAV	MDA	3440-½ 474 (500-½)		3440-1 474 (500-1)	
		3480-1 503 (600-1)	3580-1 603 (700-1)	3680-2 703 (800-2)	3760-2 ½ 783 (800-2 ½)

ELEV 2977	D	TDZE 2966
-----------	----------	-----------

[illegible]

KALISPELL, MONTANA
Amdt 4 17APR25

48°19'N-114°15'W

GLACIER PARK INTL (GPI)
RNAV (GPS) Z RWY 2

NW-1, 10 JUL 2025 to 07 AUG 2025

NW-1, 10 JUL 2025 to 07 AUG 2025

KALISPELL, MONTANA

AL-887 (FAA)

25219

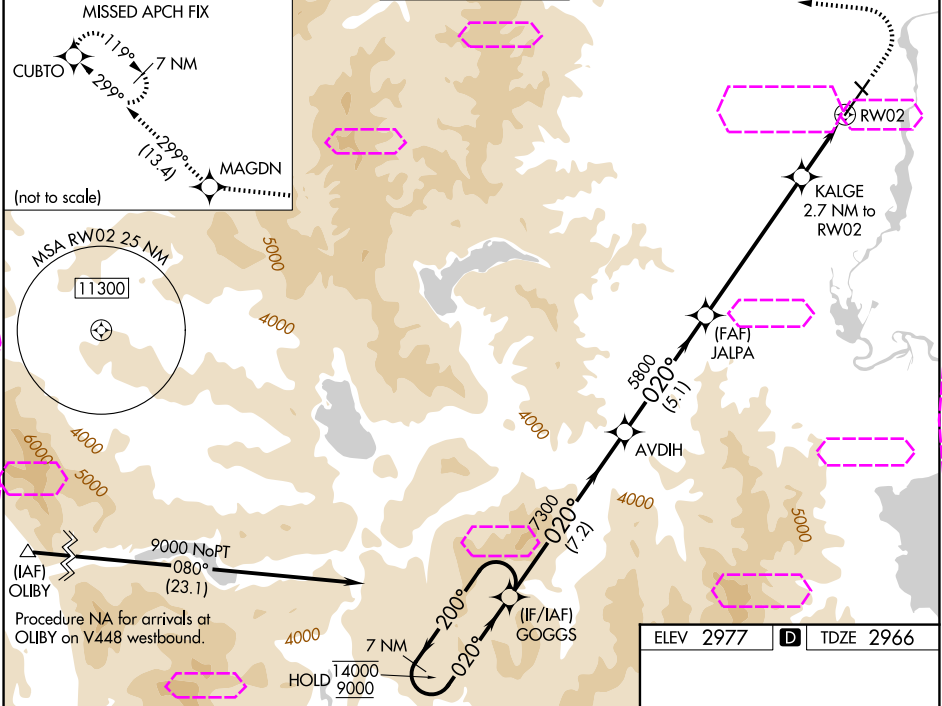
WAAS CH 70799 W02A	APP CRS 020°	Rwy Ldg TDZE 2966 Apt Elev 2977
--	------------------------	---

RNAV (GPS) Z RWY 2

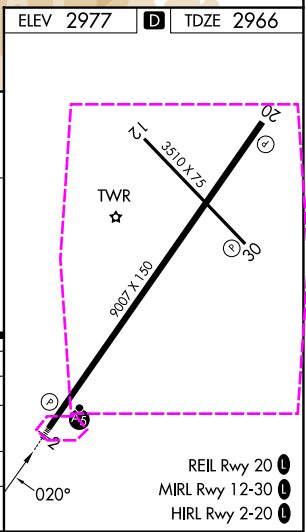
GLACIER PARK INTL (GPI)

RNP APCH - GPS. ▼ ▲ ✈ For uncompensated Baro-VNAV systems, LNAV/VNAV NA below -24°C or above 54°C. For inop ALS, increase LNAV/VNAV all Cats visibility, and LNAV Cats C and D visibility to 1½ SM.		MALSR AS	MISSED APPROACH: (Do not exceed 185K until CUBTO) Climb to 4200 then climbing left turn 9200 direct MAGDN and on track 299° to CUBTO and hold, continue climb-in-hold to 9200.
---	--	-------------	--

ATIS 132.625	SALT LAKE CENTER 127.075 244.875	GLACIER TOWER ★ 124.55 (CTAF)	GND CON 121.6	UNICOM 122.95
------------------------	--	---	-------------------------	-------------------------



7 NM Holding Pattern		GOGGS	AVDIH	JALPA	KALGE 2.7 NM to RWY 2	1.3 NM to RWY 2	CUBTO
14000 ← 200°		9000 → 020°	7300	5800	3880	3166	3166
GP 3.00°		TCH 51	7.2 NM	5.1 NM	6 NM	1.4 NM	1.3 NM
CATEGORY	A	B	C	D			
LPV DA	3166-½		200 (200-½)				
LNAV/VNAV DA	3468-1		502 (500-1)				
LNAV MDA	3440-½		474 (500-½)		3440-1 474 (500-1)		
CIRCLING	3480-1		3580-1		3680-2 3760-2½		
	503 (600-1)		603 (700-1)		703 (800-2) 783 (800-2½)		



KALISPELL, MONTANA
Amdt 4 17APR25

48°19'N-114°15'W

GLACIER PARK INTL (GPI)
RNAV (GPS) Z RWY 2

NW-1, 07 AUG 2025 to 04 SEP 2025

NW-1, 07 AUG 2025 to 04 SEP 2025