

GLACIER PARK INTL (GPI)  
RNAV (RNP) Y RWY 2

KALISPELL, MONTANA

AL-887 (FAA)

25219

APP CRS <b>020°</b>	Rwy Ldg TDZE Apt Elev	<b>9007</b> <b>2966</b> <b>2977</b>
------------------------	-----------------------------	---

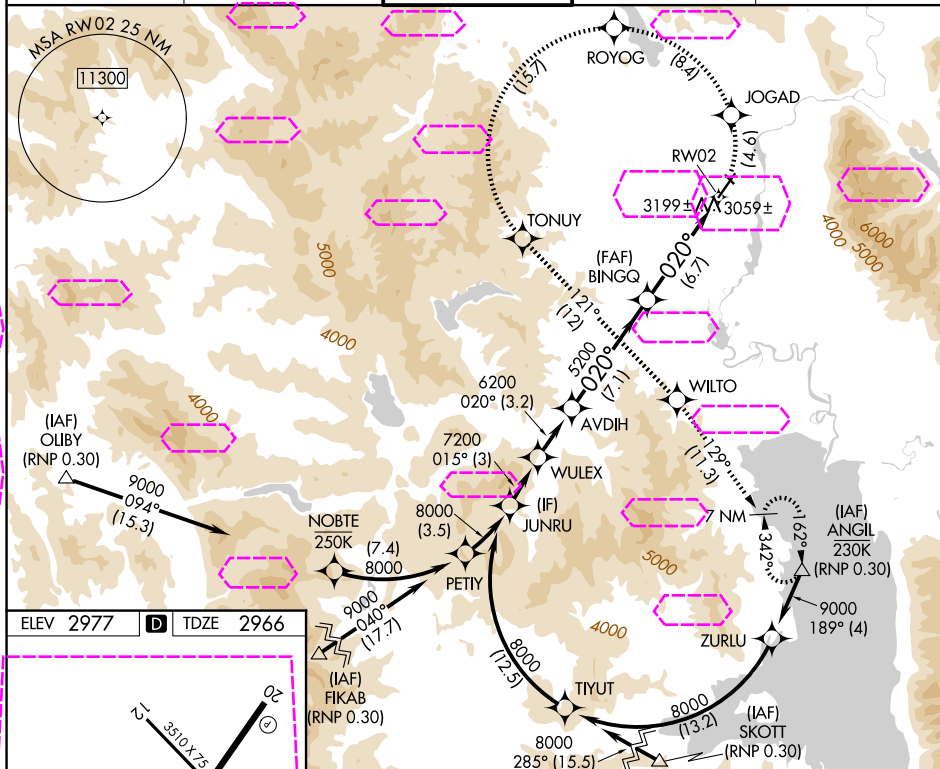
RNAV (RNP) Y RWY 2  
GLACIER PARK INTL (GPI)

RF and GPS required. Missed approach requires RNP less than 1.0. For uncompensated Baro-VNAV systems, procedure NA below -21°C (-5°F) or above 43°C (109°F). For inoperative MALSR increase RNP 0.10\* visibility to 1¼ and RNP 0.30 visibility to 2. \*Missed approach requires minimum climb of 220 feet per NM to 6100.

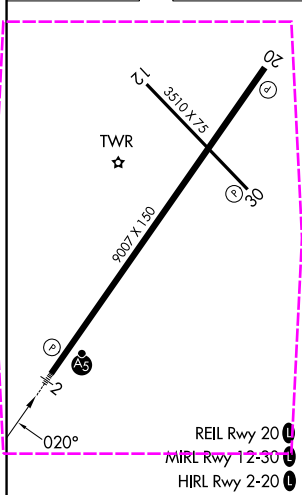


**MISSED APPROACH:** Climb to 10000 via left turn to JOGAD, and via left turn to ROYOG and via left turn to TONUY, and via 121° track to WILTO and via 129° track to ANGIL and hold.

ATIS 132.625	SALT LAKE CENTER 127.075 244.875	GLACIER TOWER ★ 124.55 (CTAF) 0	GND CON 121.6	UNICOM 122.95
-----------------	-------------------------------------	------------------------------------	------------------	------------------



ELEV 2977	<b>D</b>	TDZE 2966
-----------	----------	-----------



Procedure Turn NA

JUNRU WULEX AVDIH BINGQ RW02

8000 015° 7200 020° 6200 5200

GP 3.00° TCH 51

3 NM 3.2 NM 7.1 NM 6.7 NM

CATEGORY	A	B	C	D
RNP 0.10 DA*	NA	3340-3/4	374 (400-3/4)	
RNP 0.30 DA	NA	3522-1 1/2	556 (600-1 1/2)	

**AUTHORIZATION REQUIRED**

KALISPELL, MONTANA  
Orig-A 30JUN11

48°19'N-114°15'W

GLACIER PARK INTL (GPI)  
RNAV (RNP) Y RWY 2