

KALISPELL, MONTANA

AL-887 (FAA)

25051

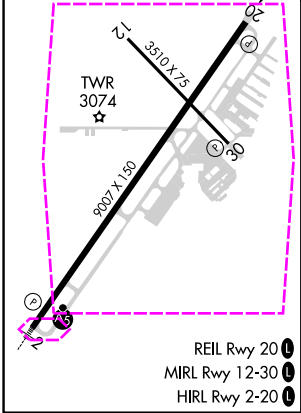
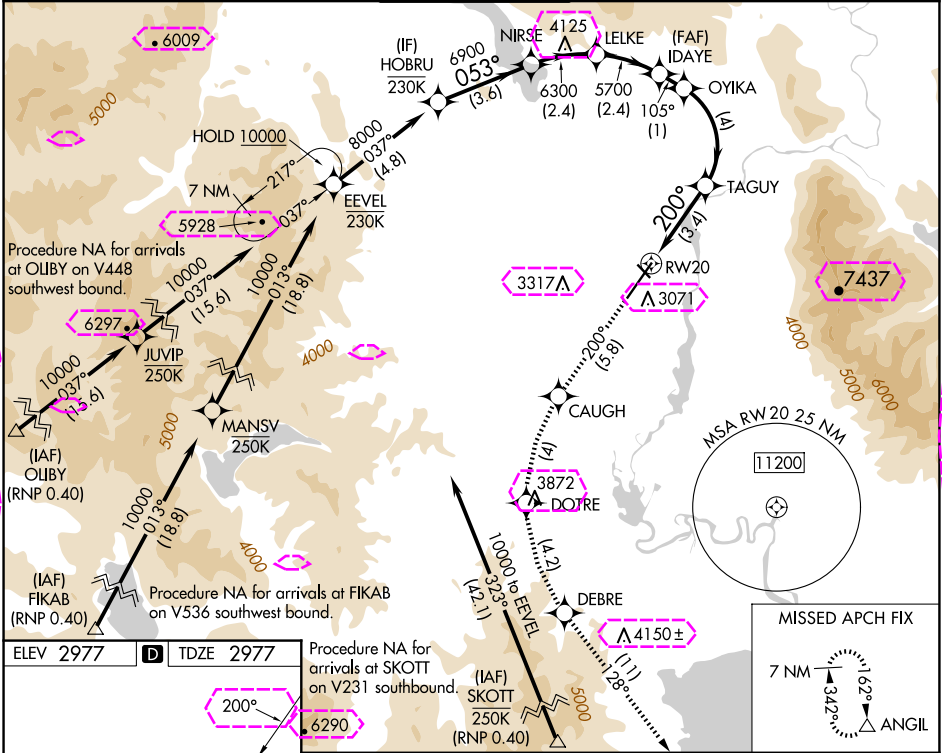
APP CRS	Rwy Idg	9007
200°	TDZE	2977
	Apt Elev	2977

RNAV (RNP) RWY 20

GLACIER PARK INTL (GPI)

RNP AR APCH - GPS.	MISSED APPROACH: Climb to 10000 on track 200° to CAUGH, left turn to DOTRE, left turn to DEBRE, and on track 128° to ANGIL and hold, continue climb-in-hold to 10000. *Missed approach requires minimum climb of 230 feet per NM to 6800.
15°C For uncompensated Baro-VNAV systems, procedure NA below -25°C or above 54°C.	

ATIS 132.625	SALT LAKE CENTER 127.075 244.875	GLACIER TOWER* 124.55 (CTAF) 0	GND CON 121.6	UNICOM 122.95
-----------------	-------------------------------------	-----------------------------------	------------------	------------------



10000	CAUGH	DOTRE	DEBRE	tr 128°	ANGIL	HOBURU
tr 200°						
	TAGUY	OYIKA	IDAYE	LELKE	NIRSE	
	4100	5377	5700	6300	6900	
	200°	105°	5700			
	3.4 NM	4 NM	1 NM	2.4 NM	2.4 NM	3.6 NM
CATEGORY	A	B	C	D		
RNP 0.10 DA*		3346-1	369 (400-1)			
RNP 0.30 DA*		3418-1 3/8	441 (500-1 3/8)			
RNP 0.30 DA		3637-1 7/8	660 (700-1 7/8)			

GP 3.00°
TCH 45

KALISPELL, MONTANA

AL-887 (FAA)

25219

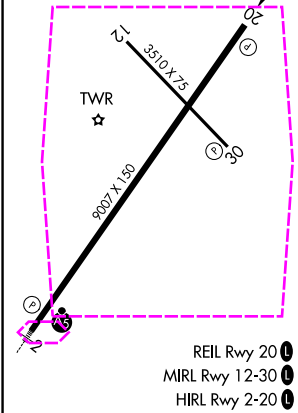
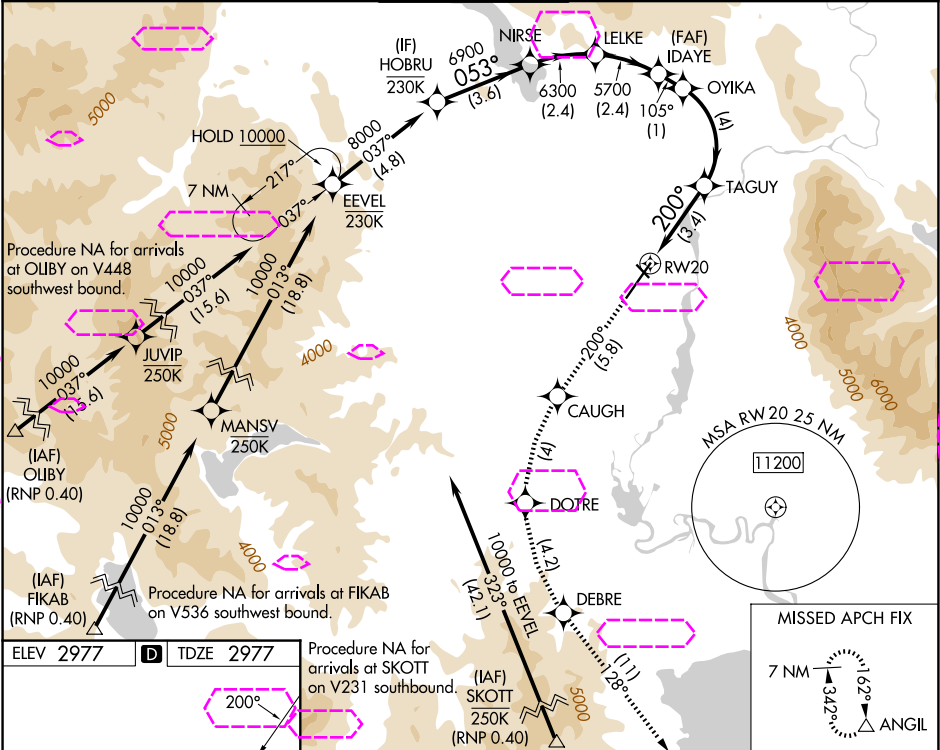
APP CRS	Rwy Ldg	9007
200°	TDZE	2977
	Apt Elev	2977

RNAV (RNP) RWY 20

GLACIER PARK INTL (GPI)

RNP AR APCH - GPS.	MISSED APPROACH: Climb to 10000 on track 200° to CAUGH, left turn to DOTRE, left turn to DEBRE, and on track 128° to ANGIL and hold, continue climb-in-hold to 10000. *Missed approach requires minimum climb of 230 feet per NM to 6800.
▼ 14°	For uncompensated Baro-VNAV systems, procedure NA below -25°C or above 54°C.

ATIS 132.625	SALT LAKE CENTER 127.075 244.875	GLACIER TOWER* 124.55 (CTAF) 0	GND CON 121.6	UNICOM 122.95
-----------------	-------------------------------------	-----------------------------------	------------------	------------------



10000	CAUGH	DOTRE	DEBRE	tr 128°	ANGIL	HOBRU
tr 200°						
	TAGUY	OYIKA	IDAYE	LELKE	NIRSE	
	4100	5377	5700	6300	6900	
	200°	105°	5700			
	3.4 NM	4 NM	1 NM	2.4 NM	2.4 NM	3.6 NM
CATEGORY	A	B	C	D		
RNP 0.10 DA*	3346-1 369 (400-1)					
RNP 0.30 DA*	3418-1 3/8 441 (500-1 3/8)					
RNP 0.30 DA	3637-1 7/8 660 (700-1 7/8)					

AUTHORIZATION REQUIRED

KALISPELL, MONTANA
Amdt 1 30NOV23

48°19'N-114°15'W

GLACIER PARK INTL (GPI)
RNAV (RNP) RWY 20

NW-1, 07 AUG 2025 to 04 SEP 2025

NW-1, 07 AUG 2025 to 04 SEP 2025