

KALISPELL, MONTANA

AL-887 (FAA)

25107

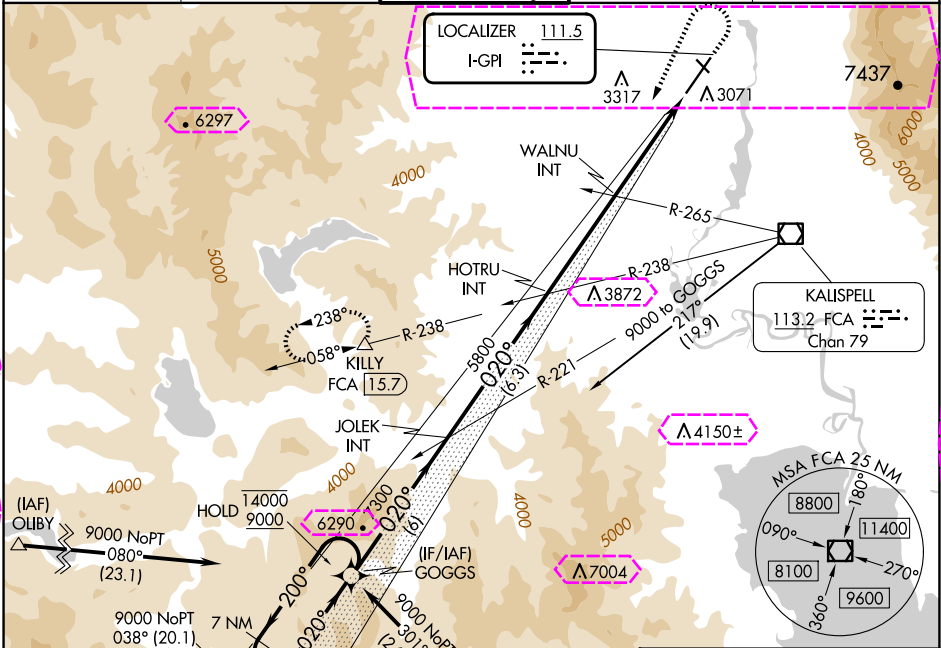
LOC I-GPI 111.5	APP CRS 020°	Rwy Idg 9007 TDZE 2966 Apl Elev 2977
---------------------------	------------------------	--

ILS or LOC RWY 2

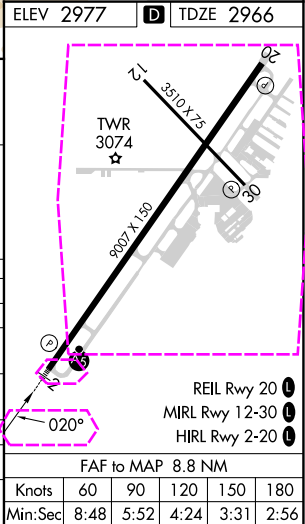
GLACIER PARK INTL (GPI)

DME required. RNAV 1-GPS or RADAR required for procedure entry.	MALSR	MISSED APPROACH: Climb to 4100 then climbing left turn to 12000 on heading 190° and FCA VOR/DME R-238 to KILLY/15.7 DME and hold, continue climb-in-hold to 12000.
Inop table does not apply to S-LOC 2 Cats C/D.		

ATIS 132.625	SALT LAKE CENTER 127.075 244.875	GLACIER TOWER★ 124.55 (CTAF)	GND CON 121.6	UNICOM 122.95
------------------------	--	--	-------------------------	-------------------------



7 NM Holding Pattern	GOGGS	JOLEK INT	HOTRU INT	WALNU INT	FCA R-238	KILLY
14000 ← 200°	9000 → 020°	020°	020°	020°	020°	020°
GS 3.00°	TCH 51	5800	5800	5800	5800	5800
6 NM	6.3 NM	4.3 NM	4.5 NM			
CATEGORY	A	B	C	D		
S-ILS 2		3166-1/2	200 (200-1/2)			
S-LOC 2	4440-3/4 1474 (1500-3/4)	4440-1 1474 (1500-1)	4440-3 1474 (1500-3)			
CIRCLING	4440-1 1/4 1463 (1500-1 1/4)	4440-1 1/2 1463 (1500-1 1/2)	4440-3 1463 (1500-3)			
WALNU FIX MINIMUMS (DUAL VOR RECEIVERS REQUIRED)						
S-LOC 2	3520-1/2 543 (600-1)	554 (600-1/2) 603 (700-1)	3520-1 1/8 703 (800-2)	554 (600-1 1/8) 783 (800-2 1/2)		
CIRCLING	3520-1 543 (600-1)	3580-1 603 (700-1)	3680-2 703 (800-2)	3760-2 1/2 783 (800-2 1/2)		



KALISPELL, MONTANA
Amdt 8A 17APR25

48°19'N-114°15'W

GLACIER PARK INTL (GPI)

ILS or LOC RWY 2

NW-1, 10 JUL 2025 to 07 AUG 2025

NW-1, 10 JUL 2025 to 07 AUG 2025

KALISPELL, MONTANA

AL-887 (FAA)

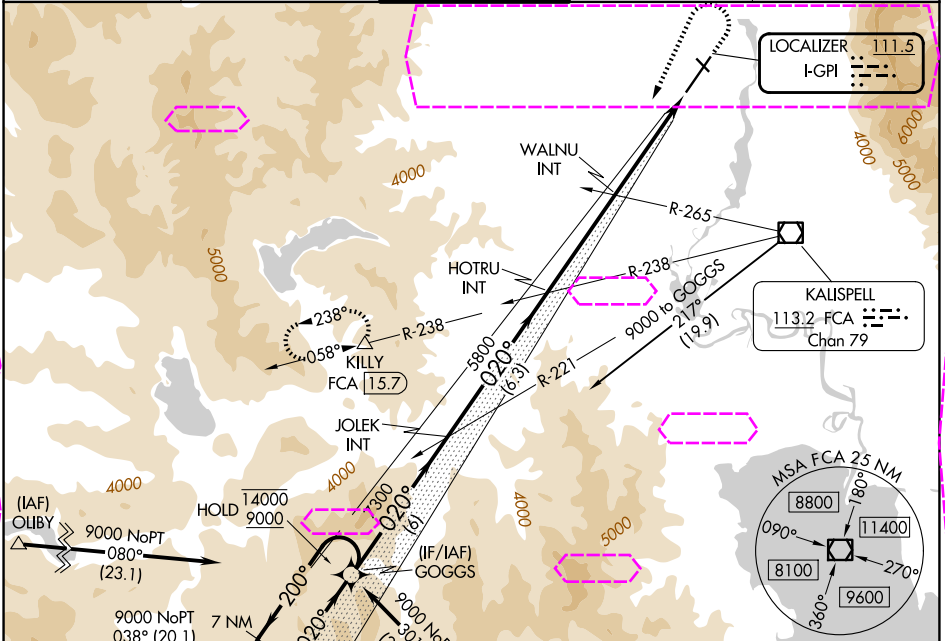
25219

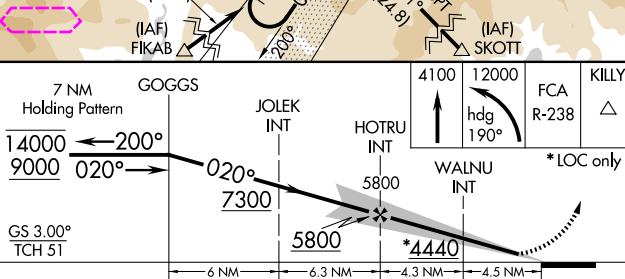
LOC I-GPI 111.5	APP CRS 020°	Rwy Ldg 9007 TDZE 2966 Apl Elev 2977
---------------------------	------------------------	--

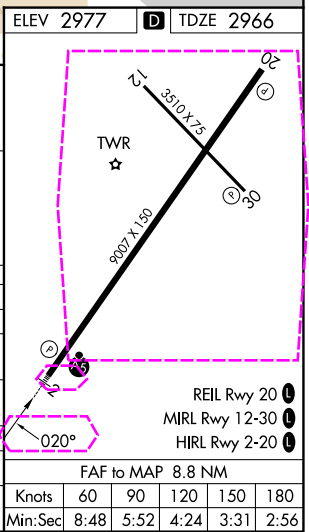
ILS or LOC RWY 2
GLACIER PARK INTL (GPI)

DME required. RNAV 1-GPS or RADAR required for procedure entry.	MALSR	MISSED APPROACH: Climb to 4100 then climbing left turn to 12000 on heading 190° and FCA VOR/DME R-238 to KILLY/15.7 DME and hold, continue climb-in-hold to 12000.
Inop table does not apply to S-LOC 2 Cats C/D.		

ATIS 132.625	SALT LAKE CENTER 127.075 244.875	GLACIER TOWER★ 124.55 (CTAF)	GND CON 121.6	UNICOM 122.95
------------------------	--	--	-------------------------	-------------------------



				
CATEGORY	A	B	C	D
S-ILS 2	3166-½ 200 (200-½)			
S-LOC 2	4440-¾ 1474 (1500-¾)	4440-1 1474 (1500-1)	4440-3 1474 (1500-3)	
CIRCLING	4440-1¼ 1463 (1500-1¼)	4440-1½ 1463 (1500-1½)	4440-3 1463 (1500-3)	
WALNU FIX MINIMUMS (DUAL VOR RECEIVERS REQUIRED)				
S-LOC 2	3520-½ 543 (600-1)	554 (600-½) 603 (700-1)	3520-1⅛ 703 (800-2)	554 (600-1⅛) 783 (800-2½)
CIRCLING	3520-1 543 (600-1)	3580-1 603 (700-1)	3680-2 703 (800-2)	3760-2½ 783 (800-2½)



KALISPELL, MONTANA
Amdt 8A 17APR25

48°19'N-114°15'W

GLACIER PARK INTL (GPI)
ILS or LOC RWY 2

NW-1, 07 AUG 2025 to 04 SEP 2025

NW-1, 07 AUG 2025 to 04 SEP 2025