

SHREVEPORT, LOUISIANA

AL-884 (FAA)

24081

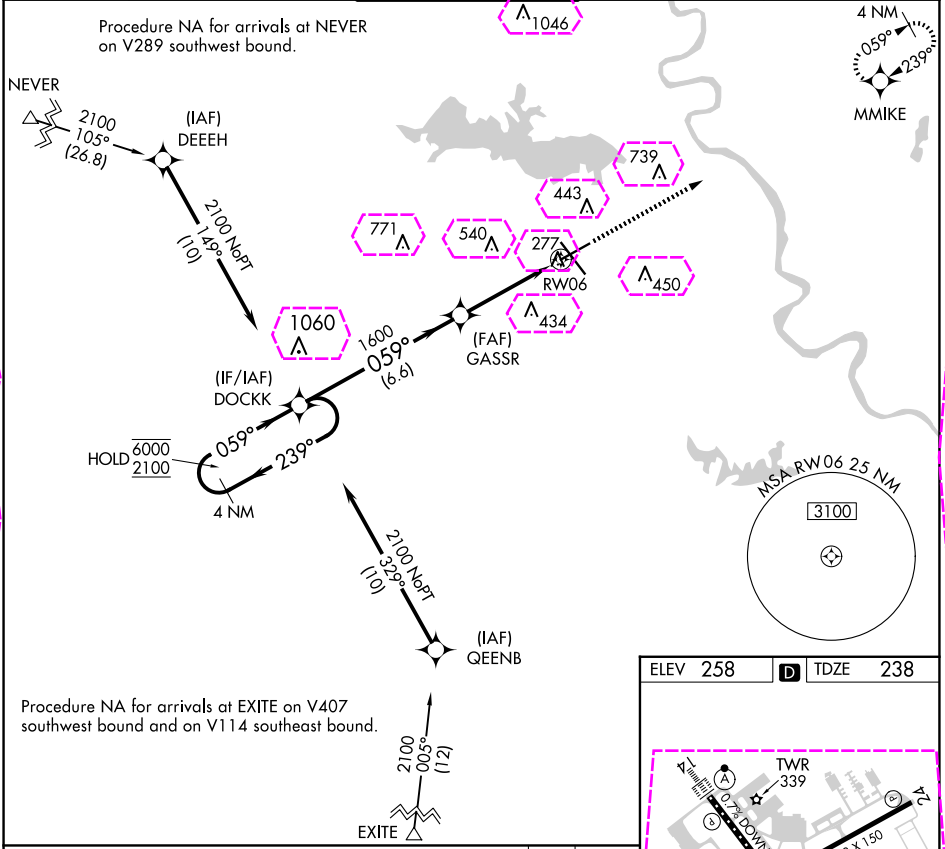
APP CRS	Rwy Idg	7003
059°	TDZE	238
	Apt Elev	258

RNAV (GPS) RWY 6

SHREVEPORT RGNL (SHV)

RNP APCH.	MISSED APPROACH: Climb to 3000 direct MMIKE and hold.
Rwy 6 helicopter visibility reduction below 3/4 SM NA.	

ATIS 128.45	SHREVEPORT APP CON 119.9 335.55	SHREVEPORT TOWER 121.4 236.775	GND CON 121.175 236.775	CLNC DEL 124.65
----------------	------------------------------------	-----------------------------------	----------------------------	--------------------



4 NM Holding Pattern DOCKK

6000	← 239°	059° →	DOCKK	1600	→ 059°	GASSR	1.3 NM to RWY 06	3.00° TCH 51	3000	MMIKE
2100										
		6.6 NM		2.8 NM		1.3 NM				
CATEGORY	A	B	C	D						
LNNAV MDA	700-1	462 (500-1)	700-1 3/8	462 (500-1 3/8)						
CIRCLING	760-1	502 (600-1)	980-2 722 (800-2)	1100-2 3/4 842 (900-2 3/4)						

ELEV 258 TDZE 238

TWR 339
7003 X 150
8348 X 200
059°

REIL Rwy 6 and 24
TDZ/CL Rwy 14
HIRL Rwy 14-32
MIRL Rwy 6-24

SHREVEPORT, LOUISIANA
Amdt 4 16JUL20

32°27'N-93°50'W

SHREVEPORT RGNL (SHV) RNAV (GPS) RWY 6

SC-4, 10 JUL 2025 to 07 AUG 2025

SC-4, 10 JUL 2025 to 07 AUG 2025

APP CRS	Rwy Ldg	7003
059°	TDZE	238
	Apt Elev	258

RNAV (GPS) RWY 6
SHREVEPORT RGNL (SHV)

RNP APCH.



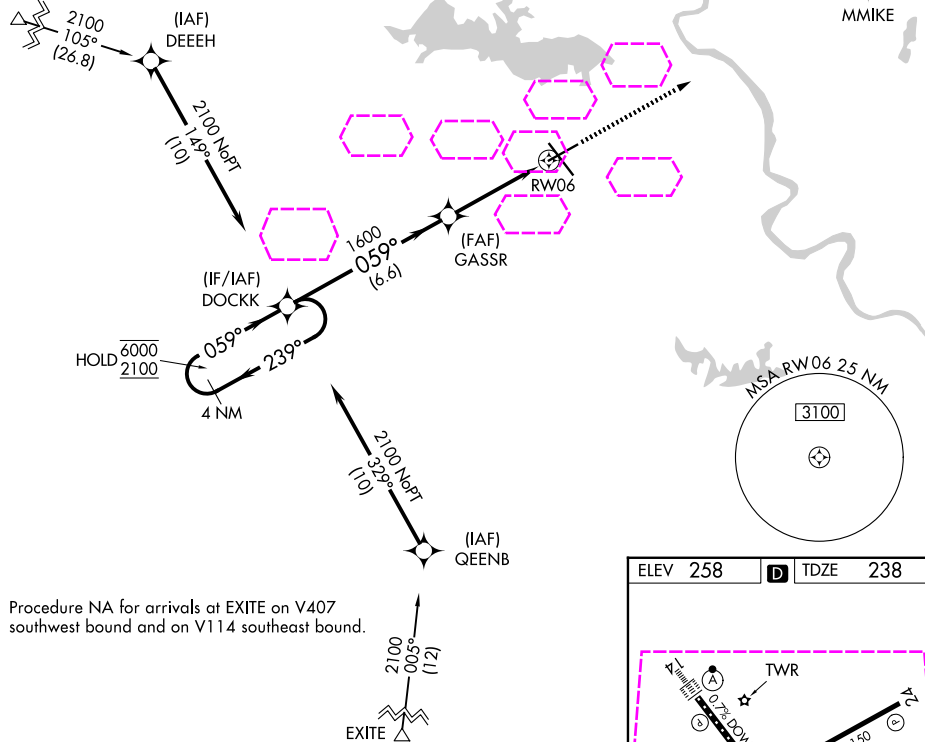
Rwy 6 helicopter visibility reduction below $\frac{3}{4}$ SM NA.

MISSED APPROACH: Climb to 3000 direct MMKE and hold.

ATIS 128.45	SHREVEPORT APP CON 119.9 335.55	SHREVEPORT TOWER 121.4 236.775	GND CON 121.175 236.775	CLNC DEL 124.65
----------------	------------------------------------	-----------------------------------	----------------------------	--------------------

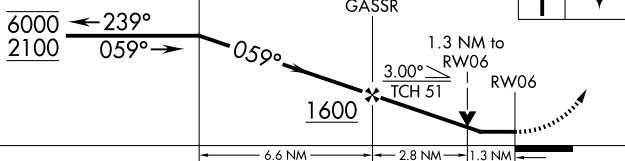
Procedure NA for arrivals at NEVER
on V289 southwest bound.

NEVER



Procedure NA for arrivals at EXITE on V407 southwest bound and on V114 southeast bound.

4 NM
Holding Pattern DOCKK

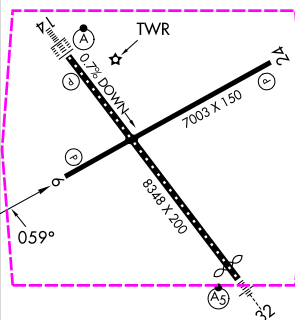


CATEGORY	A	B	C	D
INAV MDA	700-1	462 (500-1)	700-1 $\frac{3}{8}$	462 (500-1 $\frac{3}{8}$)
CIRCLING	760-1	502 (600-1)	980-2 722 (800-2)	1100-2 $\frac{3}{4}$ 842 (900-2 $\frac{3}{4}$)

ELEV	258		TDZE	238
------	-----	---	------	-----



D TDZE 238



REIL Rwy 6 and 24
TDZ/CL Rwy 14
HIRL Rwy 14-32
MIRL Rwy 6-24

SHREVEPORT, LOUISIANA
Amdt 4 16JUL20

32°27'N-93°50'W

SHREVEPORT RGNL (SHV)
RNAV (GPS) RWY 6

SC-4, 07 AUG 2025 to 04 SEP 2025

SC-4, 07 AUG 2025 to 04 SEP 2025