

SHREVEPORT RGNL (SHV)
RNAV (GPS) RWY 32

SHREVEPORT, LOUISIANA

AL-884 (FAA)

25219

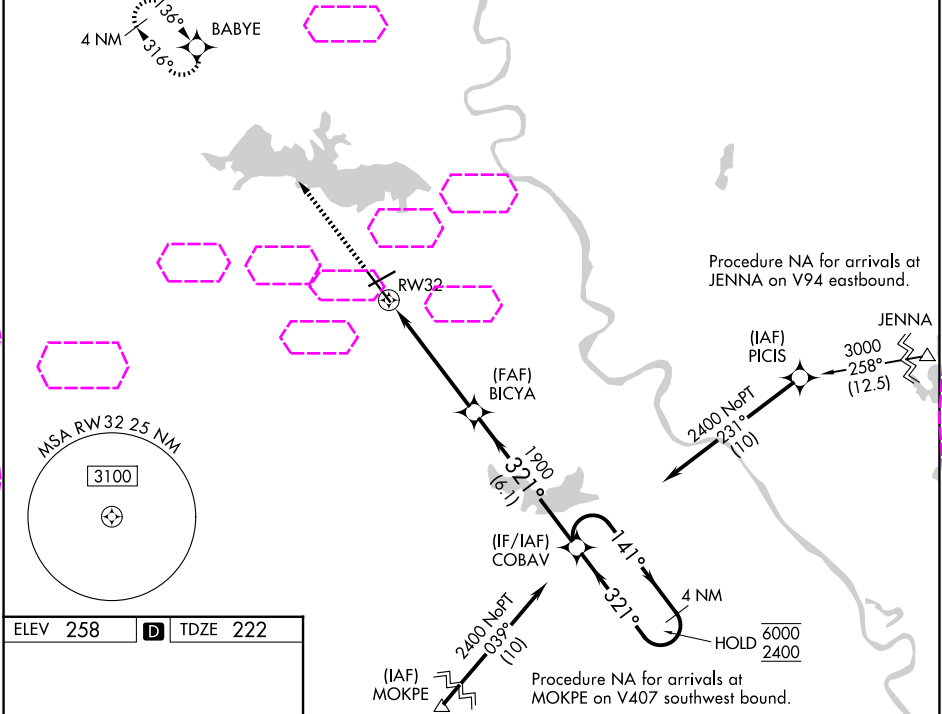
| | | |
|--|------------------------|---|
| WAAS CH 77913 W32A | APP CRS 321° | Rwy Ldg 7975 TDZE 222 Apt Elev 258 |
|--|------------------------|---|

RNAV (GPS) RWY 32

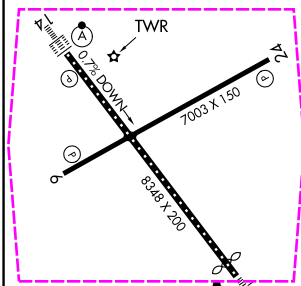
SHREVEPORT RGNL (SHV)

| | | | |
|-----------|--|--------------|---|
| RNP APCH. | ▼ Rwy 32 helicopter visibility reduction below RVR 4000 NA. Inop table does not apply to LPV all Cats. For uncompensated Baro-VNAV systems, LNAV/VNAV NA below -6°C or above 54°C. For inop ALS, increase LNAV/VNAV all Cats visibility to RVR 6000 and LNAV Cat A and B visibility to RVR 5500. | MALSR ASR | MISSED APPROACH: Climb to 2600 direct BABYE and hold. |
|-----------|--|--------------|---|

| | | | | |
|-----------------------|---|--|-----------------------------------|---------------------------|
| ATIS 128.45 | SHREVEPORT APP CON 119.9 335.55 | SHREVEPORT TOWER 121.4 236.775 | GND CON 121.175 236.775 | CLNC DEL 124.65 |
|-----------------------|---|--|-----------------------------------|---------------------------|



| | | |
|-----------------|----------|-----------------|
| ELEV 258 | D | TDZE 222 |
|-----------------|----------|-----------------|



REIL Rwys 6 and 24
TDZ/CL Rwy 14
HIRL Rwy 14-32
MIRL Rwy 6-24

| | | | | |
|--------------|-----------------|-------------|----------------------|-------------------------|
| 2600 | BABYE | 4 NM | COBAV | Holding Pattern |
| *LNAV only. | *1.3 NM to RW32 | BICYA 1900 | 1900 | 321° |
| | | | | 141° |
| | | | | 6000 |
| | | | | 2400 |
| | | | | GP 3.00° |
| | | | | TCH 52 |
| | 1.3 NM | 3.8 NM | 6.1 NM | |
| CATEGORY | A | B | C | D |
| LPV DA | | 422/40 | 200 (200-¾) | |
| LNAV/VNAV DA | | 629/40 | 407 (400-¾) | |
| LNAV MDA | 680/40 | 458 (500-¾) | 680/45 | 458 (500-¾) |
| CIRCLING | 760-1 | 502 (600-1) | 980-2 722 (800-2) | 1100-2¾ 842 (900-2¾) |

SHREVEPORT, LOUISIANA
Amdt 2B 12AUG21

32°27'N-93°50'W

SHREVEPORT RGNL (SHV)
RNAV (GPS) RWY 32

SC-4, 07 AUG 2025 to 04 SEP 2025

SC-4, 07 AUG 2025 to 04 SEP 2025