

WAAS CH <b>45913</b> <b>W14A</b>	APP CRS <b>141°</b>	Rwy Idg <b>8118</b> TDZE <b>258</b> Apt Elev <b>258</b>
--	------------------------	---

RNAV (GPS) RWY 14  
SHREVEPORT RGNL (SHV)

RNP APCH.



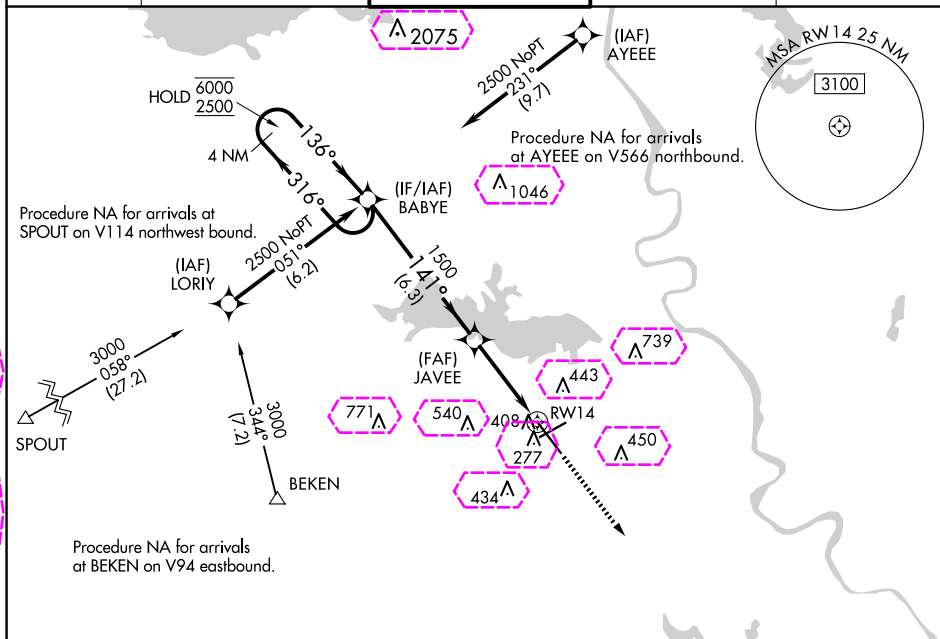
For inop ALS, increase LNAV Cat C and D visibility to RVR 6000.  
For uncompensated Baro-VNAV systems, LNAV/VNAV NA below  
-6°C or above 54°C.

ALSF-2

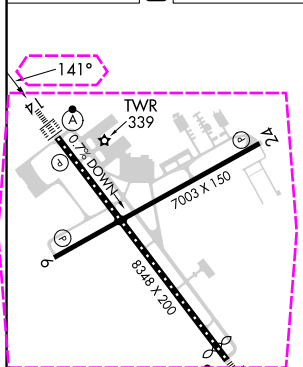


**MISSED APPROACH:** Climb to 3000 direct COBAV and hold, continue to climb-in-hold to 3000.

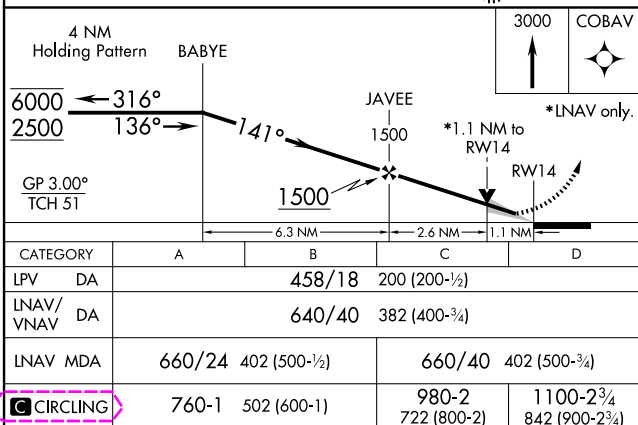
ATIS 128.45	SHREVEPORT APP CON 119.9 335.55	SHREVEPORT TOWER 121.4 236.775	GND CON 121.175 236.775	CLNC DEL 124.65
----------------	------------------------------------	-----------------------------------	----------------------------	--------------------



ELEV 258	<b>D</b>	TDZE 258
----------	----------	----------



REIL Rwy 6 and 24  
TDZ/CL Rwy 14  
HIRL Rwy 14-32  
MIRL Rwy 6-24



SHREVEPORT, LOUISIANA  
Amdt 2C 12AUG21

32°27'N-93°50'W

SHREVEPORT RGNL (SHV)  
RNAV (GPS) RWY 14

SHREVEPORT, LOUISIANA

AL-884 (FAA)

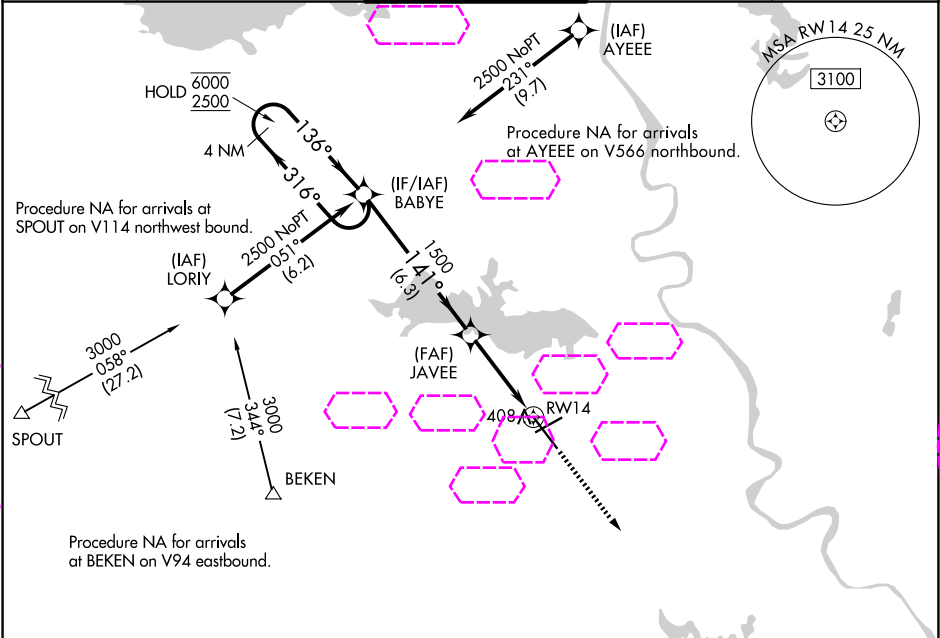
25219

WAAS CH <b>45913</b> <b>W14A</b>	APP CRS <b>141°</b>	Rwy Ldg TDZE <b>258</b> Apt Elev <b>258</b>
--	------------------------	---

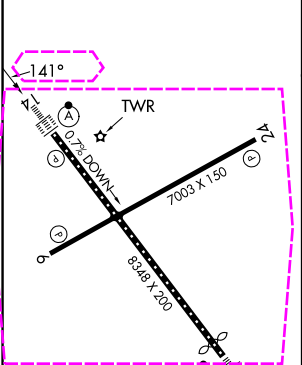
**RNAV (GPS) RWY 14**  
SHREVEPORT RGNL (SHV)

RNP APCH.	For inop ALS, increase LNAV Cat C and D visibility to RVR 6000. For uncompensated Baro-VNAV systems, LNAV/VNAV NA below -6°C or above 54°C.	ALSF-2 	MISSED APPROACH: Climb to 3000 direct COBAV and hold, continue to climb-in-hold to 3000.
-----------	--	------------	--

ATIS <b>128.45</b>	SHREVEPORT APP CON <b>119.9 335.55</b>	SHREVEPORT TOWER <b>121.4 236.775</b>	GND CON <b>121.175 236.775</b>	CLNC DEL <b>124.65</b>
-----------------------	---	--	-----------------------------------	---------------------------



ELEV 258	<b>D</b>	TDZE 258
----------	----------	----------



REIL Rws 6 and 24  
TDZ/CL Rwy 14  
HIRL Rwy 14-32  
MIRL Rwy 6-24

4 NM Holding Pattern		BABYE		JAVEE		3000 ↑	COBAV ✦
6000 ← 316° 2500 → 136°		141°		1500		*1.1 NM to RW14 *LNAV only.	
GP 3.00° TCH 51		1500		1500		RW14	
		6.3 NM		2.6 NM		1.1 NM	
CATEGORY	A	B	C	D			
LPV DA	458/18		200 (200-½)				
LNAV/VNAV DA	640/40		382 (400-¾)				
LNAV MDA	660/24	402 (500-½)		660/40	402 (500-¾)		
CIRCLING	760-1	502 (600-1)		980-2 722 (800-2)	1100-2¾ 842 (900-2¾)		

SHREVEPORT, LOUISIANA  
Amdt 2C 12AUG21

32°27'N-93°50'W

SHREVEPORT RGNL (SHV)  
**RNAV (GPS) RWY 14**