

SHREVEPORT, LOUISIANA

AL-884 (FAA)

25107

| | | |
|---------------------------|------------------------|---|
| LOC I-FOG 110.3 | APP CRS 321° | Rwy Idg 7975 TDZE 222 Apt Elev 258 |
|---------------------------|------------------------|---|

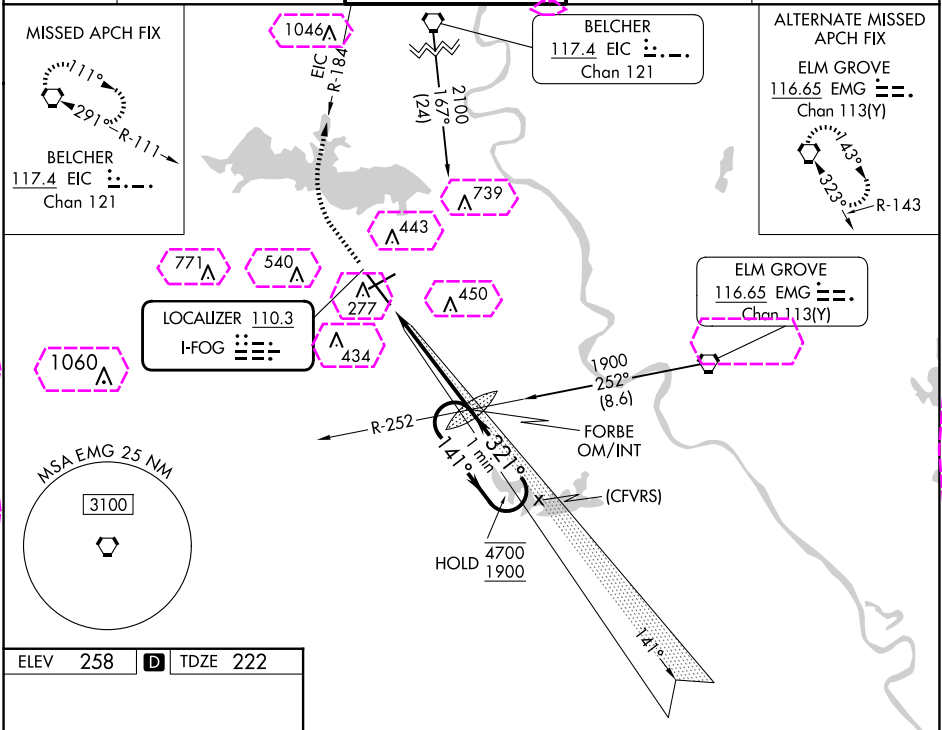
ILS or LOC RWY 32
SHREVEPORT RGNL (SHV)

⚠ Rwy 32 helicopter visibility reduction below RVR 4000 NA.
Inop table does not apply to S-ILS 32 all Cats.
For inop ALS, increase S-LOC 32 Cat A and B
visibility to RVR 5500 and Cat C and D visibility to 1 $\frac{1}{2}$ SM.

MALSR
(AS)

MISSED APPROACH: Climb to 800 then
climbing right turn to 3100 on EIC VORTAC
R-184 to EIC VORTAC and hold.

| | | | | |
|-----------------------|---|--|-----------------------------------|---------------------------|
| ATIS 128.45 | SHREVEPORT APP CON 119.9 335.55 | SHREVEPORT TOWER 121.4 236.775 | GND CON 121.175 236.775 | CLNC DEL 124.65 |
|-----------------------|---|--|-----------------------------------|---------------------------|



| | | |
|----------|----------|----------|
| ELEV 258 | D | TDZE 222 |
|----------|----------|----------|

TWR 339
7003 X 150
8248 X 200
321°

REIL Rwy 6 and 24
HIRL Rwy 14-32
MIRL Rwy 6-24
TDZ/CL Rwy 14

FAF to MAP 4.8 NM

| | | | | | |
|---------|------|------|------|------|------|
| Knots | 60 | 90 | 120 | 150 | 180 |
| Min:Sec | 4:48 | 3:12 | 2:24 | 1:55 | 1:36 |

FORBE OM/INT
1817
One Minute Holding Pattern
141°
321°
4700 1900
GS 3.00°
TCH 52

4.8 NM

| CATEGORY | A | B | C | D |
|-----------------|----------------------------------|---|--------------------|---|
| S-ILS 32 | 422/40 200 (200- $\frac{3}{4}$) | | | |
| S-LOC 32 | 720/40 498 (500- $\frac{3}{4}$) | | 720/50 498 (500-1) | |
| CIRCLING | 760-1 502 (600-1) | | 980-2 722 (800-2) | 1100-2 $\frac{3}{4}$ 842 (900-2 $\frac{3}{4}$) |

SHREVEPORT, LOUISIANA
Amdt 6B 12AUG21

32°27'N-93°50'W

SHREVEPORT RGNL (SHV)
ILS or LOC RWY 32

SC-4, 10 JUL 2025 to 07 AUG 2025

SC-4, 10 JUL 2025 to 07 AUG 2025

SHREVEPORT, LOUISIANA

AL-884 (FAA)

25219

| | | |
|---------------------------|------------------------|---|
| LOC I-FOG 110.3 | APP CRS 321° | Rwy Ldg TDZE 222 Apt Elev 258 |
|---------------------------|------------------------|---|

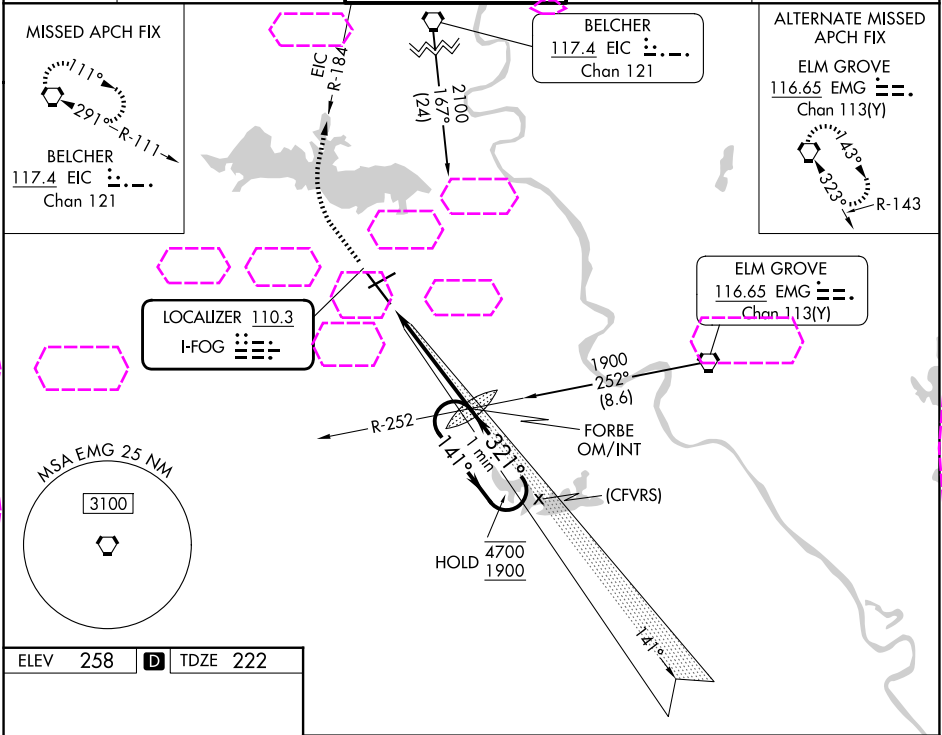
ILS or LOC RWY 32
SHREVEPORT RGNL (SHV)

⚠ Rwy 32 helicopter visibility reduction below RVR 4000 NA.
Inop table does not apply to S-ILS 32 all Cats.
For inop ALS, increase S-LOC 32 Cat A and B
visibility to RVR 5500 and Cat C and D visibility to 1½ SM.

MALSR
(AS)

MISSED APPROACH: Climb to 800 then
climbing right turn to 3100 on EIC VORTAC
R-184 to EIC VORTAC and hold.

| | | | | |
|-----------------------|---|--|-----------------------------------|---------------------------|
| ATIS 128.45 | SHREVEPORT APP CON 119.9 335.55 | SHREVEPORT TOWER 121.4 236.775 | GND CON 121.175 236.775 | CLNC DEL 124.65 |
|-----------------------|---|--|-----------------------------------|---------------------------|



| | | |
|----------|----------|----------|
| ELEV 258 | D | TDZE 222 |
|----------|----------|----------|

TWR
0.7 NM DOWN
7003 X 150
8248 X 200
321°

REIL Rwy 6 and 24
HIRL Rwy 14-32
MIRL Rwy 6-24
TDZ/CL Rwy 14

FAF to MAP 4.8 NM

| | | | | | |
|---------|------|------|------|------|------|
| Knots | 60 | 90 | 120 | 150 | 180 |
| Min:Sec | 4:48 | 3:12 | 2:24 | 1:55 | 1:36 |

| | | | |
|-----|------|-----------|-----|
| 800 | 3100 | EIC R-184 | EIC |
|-----|------|-----------|-----|

FORBE OM/INT
1817
One Minute Holding Pattern
141°
321°
4700 1900
GS 3.00°
TCH 52

4.8 NM

| CATEGORY | A | B | C | D |
|-----------------|--------------------|-------------|----------------------|-------------------------|
| S-ILS 32 | 422/40 200 (200-¾) | | | |
| S-LOC 32 | 720/40 | 498 (500-¾) | 720/50 | 498 (500-1) |
| CIRCLING | 760-1 | 502 (600-1) | 980-2 722 (800-2) | 1100-2¾ 842 (900-2¾) |

SHREVEPORT, LOUISIANA
Amdt 6B 12AUG21

32°27'N-93°50'W

SHREVEPORT RGNL (SHV)
ILS or LOC RWY 32

SC-4, 07 AUG 2025 to 04 SEP 2025

SC-4, 07 AUG 2025 to 04 SEP 2025