

LOC/DME I-SHV <u>110.7</u> Chan 44	APP CRS 141°	Rwy Idg 8118 TDZE 258 Apt Elev 258
---	------------------------	---

ILS or LOC RWY 14
SHREVEPORT RGNL (SHV)

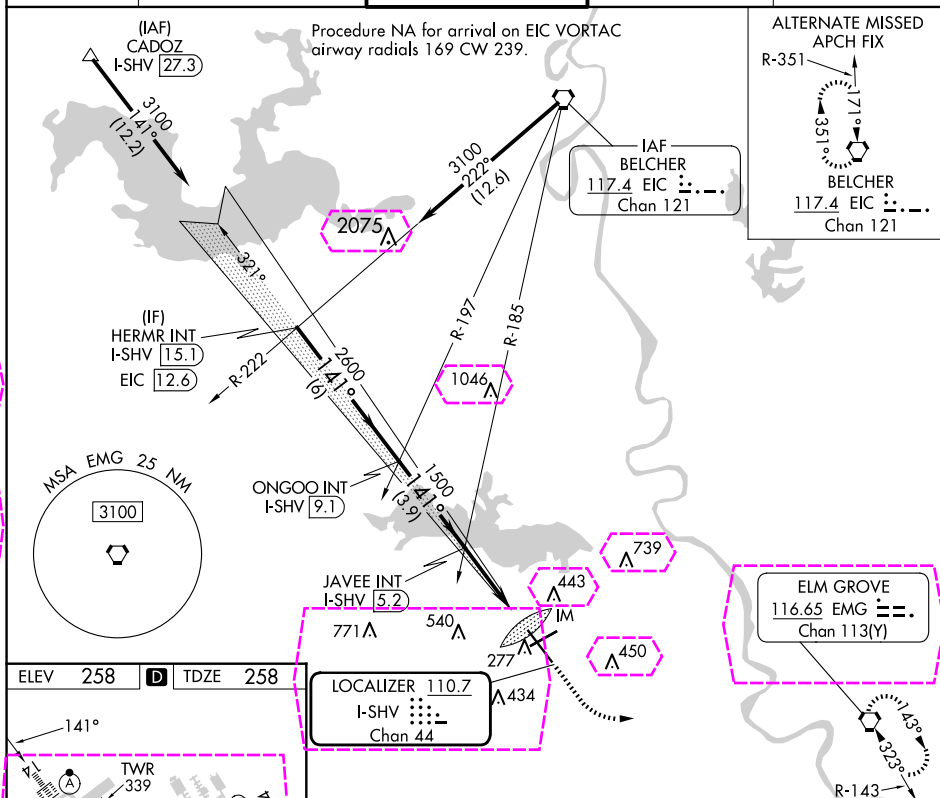


For inop ALS, increase S-ILS 14 Cat E visibility to RVR 4000 and S-LOC 14 Cat E visibility to 1¼ SM.



MISSED APPROACH: Climb to 2000 then left turn direct EMG VORTAC and hold.

ATIS 128.45	SHREVEPORT APP CON 119.9 335.55	SHREVEPORT TOWER 121.4 236.775	GND CON 121.175 236.775	CLNC DEL 124.65
-----------------------	---	--	-----------------------------------	---------------------------



REIL Rws 6 and 24
 TDZ/CL Rwy 14
 HIRL Rwy 14-32
 MIRL Rwy 6-24

FAF to MAP 3.7 NM					
Knots	60	90	120	150	180
Min:Sec	3:42	2:28	1:51	1:29	1:14

CATEGORY	A	B	C	D	E
S-ILS 14	458/18 200 (200-½)				
S-LOC 14	680/24 422 (500-½)	680/40 422 (500-¾)			
C CIRCLING	760-1 502 (600-1)	980-2 722 (800-2)	1100-2¾ 842 (900-2¾)	1100-3 842 (900-3)	

ILS or LOC RWY 14
SHREVEPORT RGNL (SHV)

The diagram shows a frequency spectrum from 3100 MHz to 1500 MHz. Key channels and their parameters are:

- LOCALIZER 110.7**: I-SHV 110.7, Chan 44
- HERMR INT I-SHV 15.1**: 3100 MHz, 141°
- ONGOO INT I-SHV 9.1**: 2600 MHz
- JAVEE INT I-SHV 5.2**: 1500 MHz
- *I-SHV 2.7**: 1500 MHz
- I-SHV 1.5**: 1500 MHz
- Chan 113(Y)**: 145°
- R-143**: 323°

The table below provides the channel parameters for each category:

CATEGORY	A	B	C	D	E
S-ILS 14	458/18 200 (200-½)				
S-LOC 14	680/24	422 (500-½)	680/40 422 (500-¾)		
CIRCLING	760-1	502 (600-1)	980-2 722 (800-2)	1100-2¾ 842 (900-2¾)	1100-3 842 (900-3)

SHREVEPORT RGNL (SHV)
ILS or LOC RWY 14

SC-4, 07 AUG 2025 to 04 SEP 2025