

DUNKIRK, NEW YORK

AL-880 (FAA)

24081

APP CRS <b>059°</b>	Rwy Idg TDZE Apt Elev <b>N/A</b> <b>N/A</b> <b>692</b>
------------------------	---

# RNAV (GPS)-B

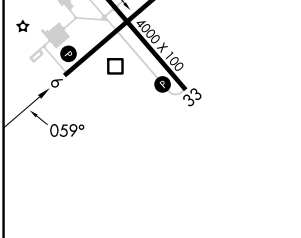
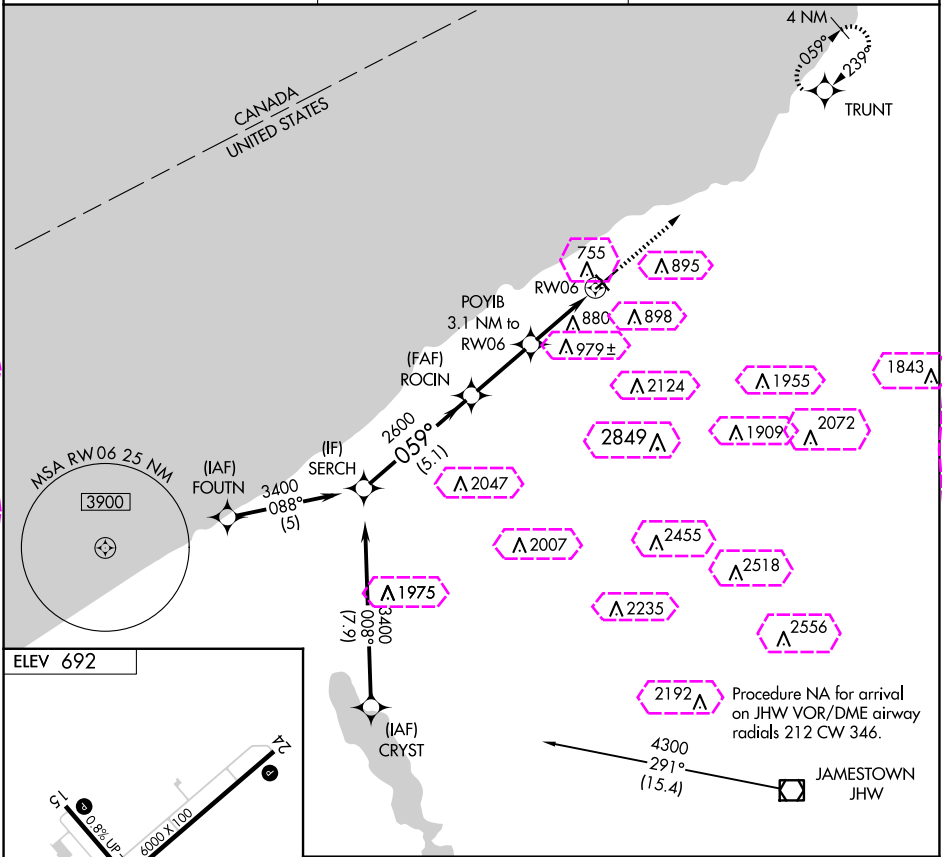
CHAUTAUQUA COUNTY/DUNKIRK (DKK)

RNP APCH.

Circling to Rwy 6, 24, 33 NA at night.  
 -22°C  
Circling Cat D NA southeast of Rwy 6 and southwest of Rwy 33.

MISSED APPROACH: Climb to 3200 direct TRUNT and hold.

ASOS <b>119.275</b>	BUFFALO APP CON <b>126.5 317.6</b>	UNICOM <b>123.075 (CTAF) 0</b>
------------------------	---------------------------------------	-----------------------------------



MIRL Rwy 15-33  
REIL Rwy 6 and 24  
HIRL Rwy 6-24

Visual Segment - Obstacles.			
3200 TRUNT			
SERCH 3400 059° 2600 1700 RW06			
5.1 NM 2.8 NM 3.1 NM			
CATEGORY	A	B	C
CIRCLING	1200-1 508 (600-1)	1320-1 628 (700-1)	1640-2¾ 948 (1000-2¾)
			2140-3 1448 (1500-3)

DUNKIRK, NEW YORK

Orig-A 10OCT19

CHAUTAUQUA COUNTY/DUNKIRK (DKK)

42°30'N-79°16'W

# RNAV (GPS)-B

NE-2, 10 JUL 2025 to 07 AUG 2025

NE-2, 10 JUL 2025 to 07 AUG 2025

DUNKIRK, NEW YORK

AL-880 (FAA)

25219

APP CRS <b>059°</b>	Rwy Ldg TDZE Apt Elev <b>692</b>	N/A N/A 692
------------------------	---	-------------------

# RNAV (GPS)-B

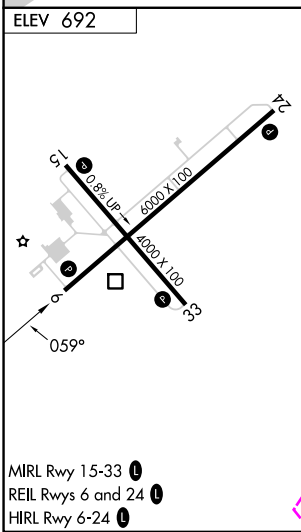
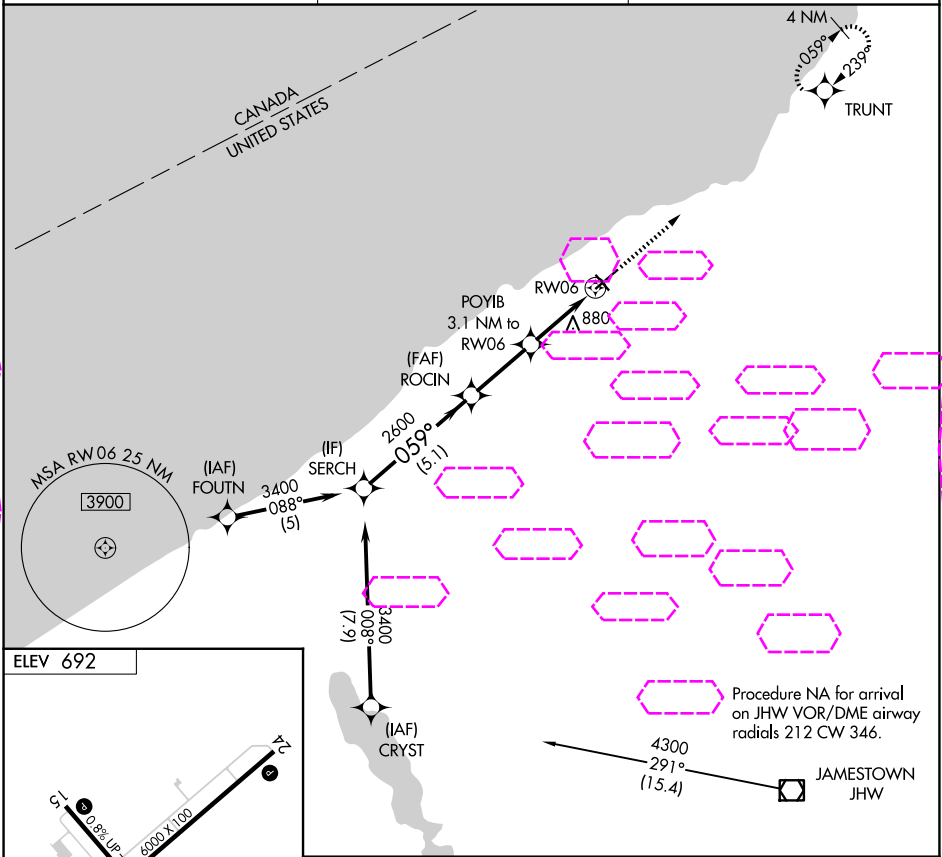
CHAUTAUQUA COUNTY/DUNKIRK (DKK)

RNP APCH.

Circling to Rwy 6, 24, 33 NA at night.  
 -21°C  
Circling Cat D NA southeast of Rwy 6 and southwest of Rwy 33.

MISSED APPROACH: Climb to 3200 direct TRUNT and hold.

ASOS <b>119.275</b>	BUFFALO APP CON <b>126.5 317.6</b>	UNICOM <b>123.075 (CTAF) 0</b>
------------------------	---------------------------------------	-----------------------------------



MIRL Rwy 15-33   
REIL Rwy 6 and 24   
HIRL Rwy 6-24

Visual Segment - Obstacles.				3200	TRUNT
CATEGORY	A	B	C	D	
CIRCLING	1200-1 508 (600-1)	1320-1 628 (700-1)	1640-2¾ 948 (1000-2¾)	2140-3 1448 (1500-3)	

DUNKIRK, NEW YORK

Orig-A 10OCT19

CHAUTAUQUA COUNTY/DUNKIRK (DKK)

42°30'N-79°16'W

# RNAV (GPS)-B

NE-2, 07 AUG 2025 to 04 SEP 2025

NE-2, 07 AUG 2025 to 04 SEP 2025