

DUNKIRK, NEW YORK

AL-880 (FAA)

24081

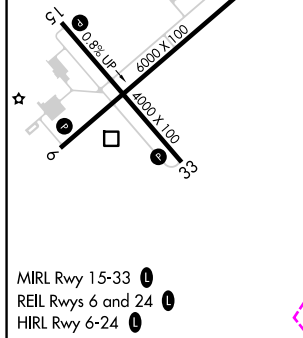
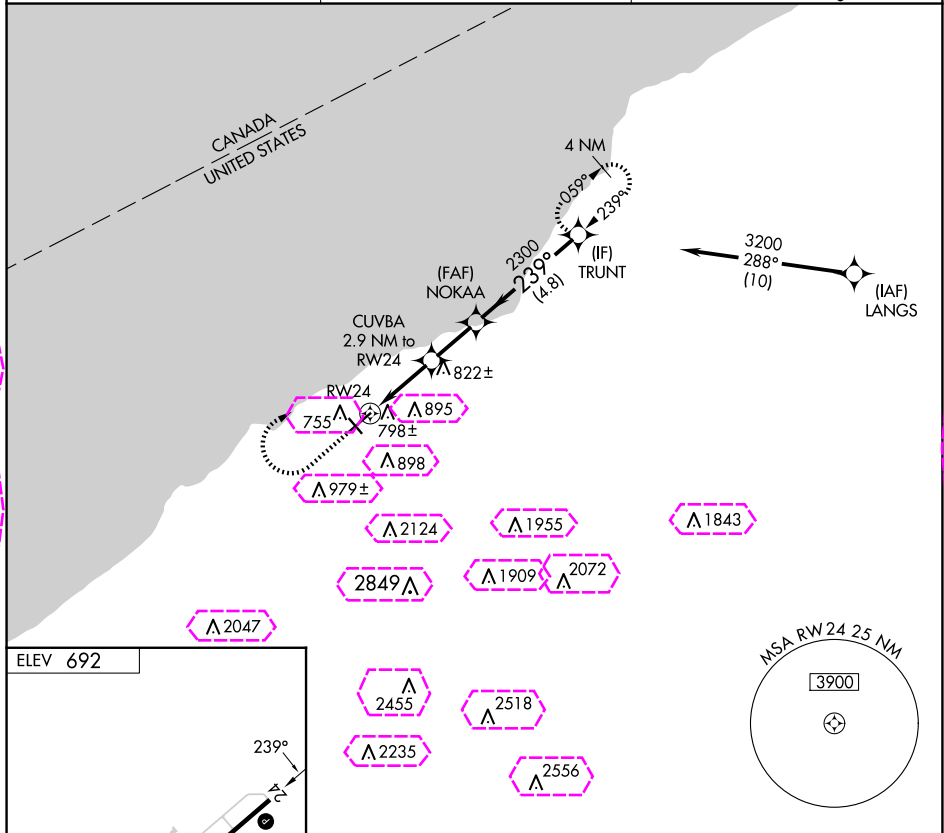
APP CRS	Rwy Idg	N/A
239°	TDZE	N/A
	Apt Elev	692

RNAV (GPS)-A

CHAUTAUQUA COUNTY/DUNKIRK (DKK)

RNP APCH - GPS.	<p>V Circling Cat D NA southeast of Rwy 6 and southwest of Rwy 33. A Circling Rwy 6, 24, 33 NA at night. 22°C Rwy 6, 24, 33 helicopter visibility reduction below 1 SM NA.</p>	<p>MISSED APPROACH: Climb to 1900 then climbing right turn to 3200 direct TRUNT and hold.</p>
-----------------	---	---

ASOS 119.275	BUFFALO APP CON 126.5 317.6	UNICOM 123.075 (CTAF) 1
------------------------	---------------------------------------	-----------------------------------



1900	3200	TRUNT	Visual Segment - Obstacles.
↑	↪	✧	
CUVBA 2.9 NM to RW24	NOKAA	TRUNT	
RW24	2300	3200	
2.9 NM	2.1 NM	4.8 NM	
CATEGORY	A	B	C
CIRCLING	1200-1 508 (600-1)	1320-1 628 (700-1)	1640-2¾ 948 (1000-2¾)
			D
			2140-3 1448 (1500-3)

DUNKIRK, NEW YORK
Orig-B 27JAN22

CHAUTAUQUA COUNTY/DUNKIRK (DKK)

42°30'N-79°16'W

RNAV (GPS)-A

NE-2, 10 JUL 2025 to 07 AUG 2025

NE-2, 10 JUL 2025 to 07 AUG 2025

DUNKIRK, NEW YORK

AL-880 (FAA)

25219

APP CRS 239°	Rwy Ldg TDZE Apt Elev N/A N/A 692
------------------------	---

RNAV (GPS)-A

CHAUTAUQUA COUNTY/DUNKIRK (DKK)

RNP APCH - GPS.

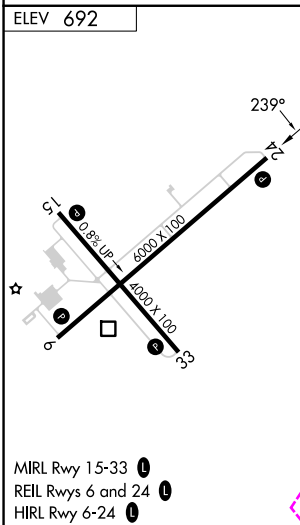
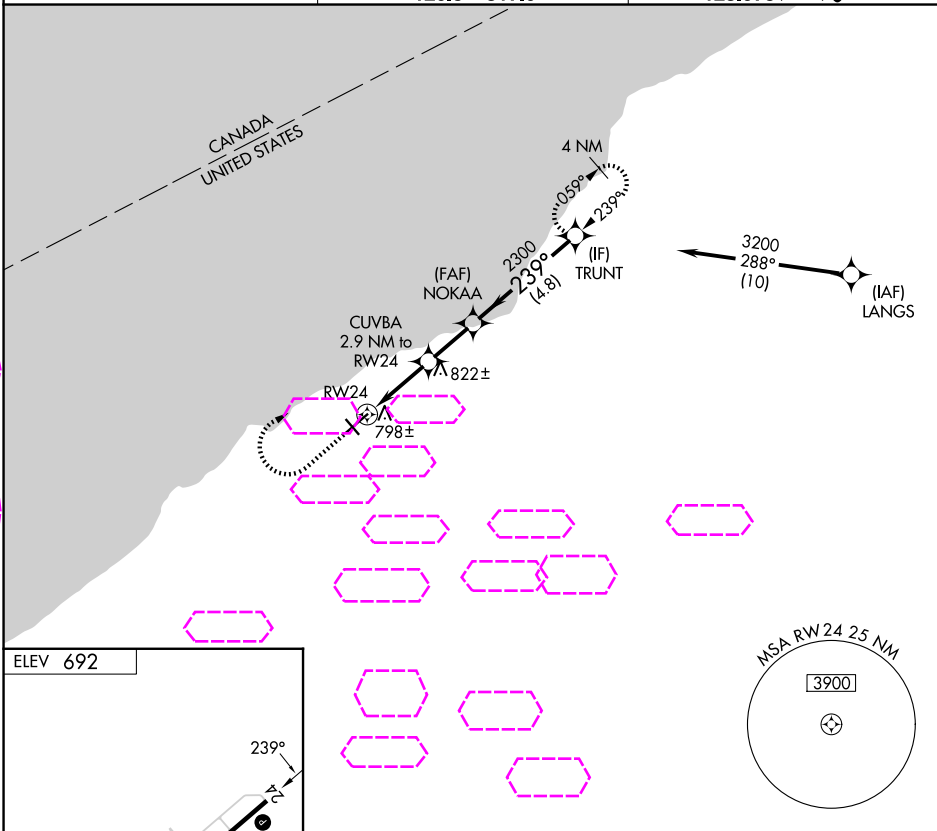
- Circling Cat D NA southeast of Rwy 6 and southwest of Rwy 33.
 Circling Rwy 6, 24, 33 NA at night.
 Rwy 6, 24, 33 helicopter visibility reduction below 1 SM NA.

MISSED APPROACH: Climb to 1900 then climbing right turn to 3200 direct TRUNT and hold.

ASOS
119.275

BUFFALO APP CON
126.5 317.6

UNICOM
123.075 (CTAF) 1



1900	3200	TRUNT	Visual Segment - Obstacles.	
		CUVBA 2.9 NM to RW24	NOKAA	TRUNT
RW24		2300	239°	3200
2.9 NM		2.1 NM	4.8 NM	
CATEGORY	A	B	C	D
CIRCLING	1200-1 508 (600-1)	1320-1 628 (700-1)	1640-2¾ 948 (1000-2¾)	2140-3 1448 (1500-3)

DUNKIRK, NEW YORK

Orig-B 27JAN22

CHAUTAUQUA COUNTY/DUNKIRK (DKK)

42°30'N-79°16'W

RNAV (GPS)-A

NE-2, 07 AUG 2025 to 04 SEP 2025

NE-2, 07 AUG 2025 to 04 SEP 2025