

DUNKIRK, NEW YORK

AL-880 (FAA)

23222

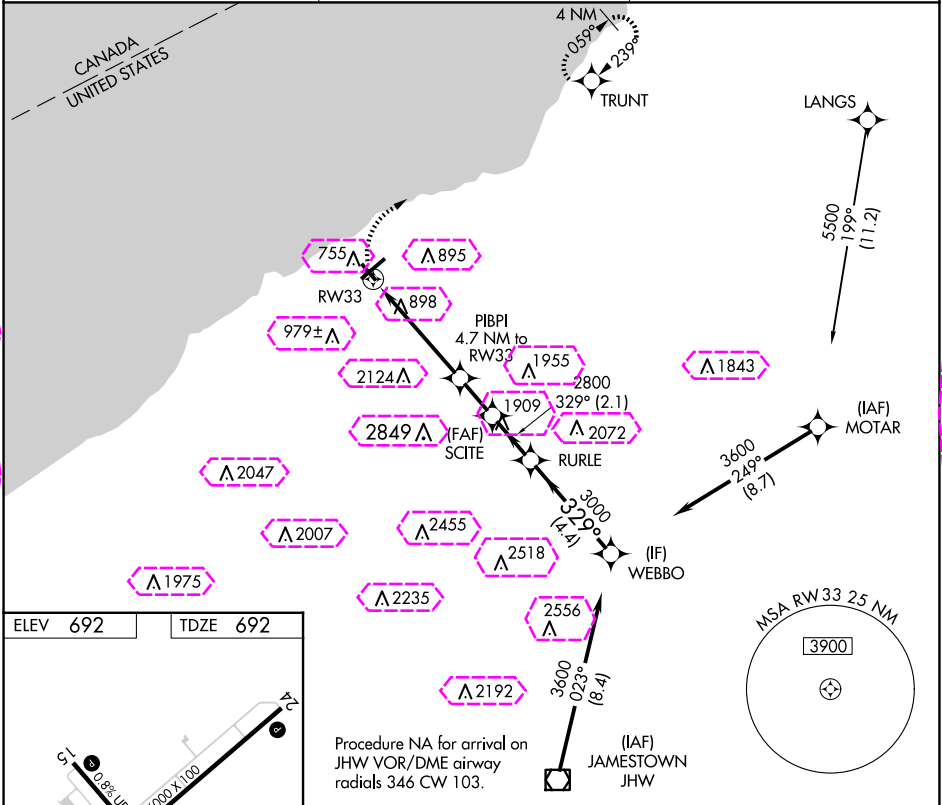
APP CRS	Rwy Idg	4000
329°	TDZE	692
	Apt Elev	692

RNAV (GPS) RWY 33

CHAUTAUQUA COUNTY/DUNKIRK (DKK)

RNP APCH.	<p>T Circling Cat D NA southeast of Rwy 6 and southwest of Rwy 33. A Rwy 33 helicopter visibility reduction below 1 SM NA. S Straight-In Rwy 33 NA at night, Circling Rwy 6, 24, 33 NA at night.</p>	MISSED APPROACH: Climbing right turn to 3200 direct TRUNT and hold.
-----------	---	---

ASOS 119.275	BUFFALO APP CON 126.5 317.6	UNICOM 123.075 (CTAF) 0
-----------------	--------------------------------	----------------------------



329°

3200	TRUNT	Visual Segment - Obstacles.				WEBBO	
		SCITE	RURLE	3600			
PIBPI 4.7 NM to RW33		2800	329°	3000			
2240							
4.7 NM		1.8 NM	2.1 NM	4.4 NM			
CATEGORY	A	B	C		D		
LNNAV MDA	1860-1¼ 1168 (1200-1¼)	1860-1½ 1168 (1200-1½)	1860-3		1168 (1200-3)		
	1860-1½ 1168 (1200-1½)	1860-1½ 1168 (1200-1½)	1860-3		2140-3		
CIRCLING			1168 (1200-3)		1448 (1500-3)		

MIRL Rwy 15-33

REIL Rwy 6 and 24

HIRL Rwy 6-24

DUNKIRK, NEW YORK
Orig-C 100CT19

42°30'N-79°16'W

RNAV (GPS) RWY 33

NE-2, 07 AUG 2025 to 04 SEP 2025