

DUNKIRK, NEW YORK

AL-880 (FAA)

23222

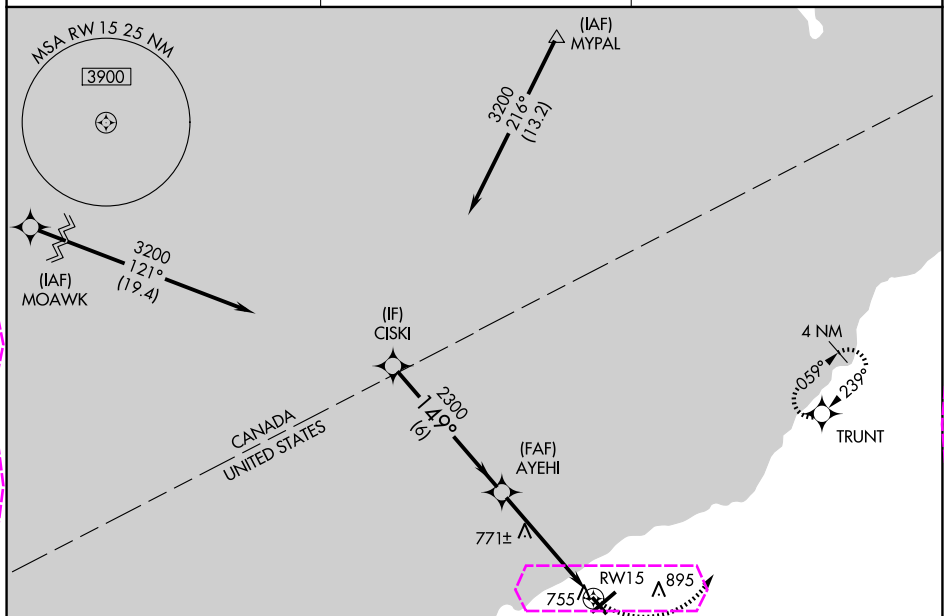
APP CRS	Rwy Idg	4000
149°	TDZE	684
	Apt Elev	692

RNAV (GPS) RWY 15

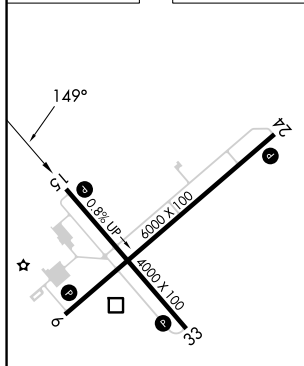
CHAUTAUQUA COUNTY/DUNKIRK (DKK)

RNP APCH.	<p>⚠ Circling to Rwy 6, 24, 33 NA at night. ⚠ Circling Cat D NA southeast of Rwy 6 and southwest of Rwy 33. ❄ Rwy 15 helicopter visibility reduction below $\frac{3}{4}$ SM NA.</p>	MISSED APPROACH: Climbing left turn to 3200 direct TRUNT and hold, continue climb-in-hold to 3200.
-----------	--	--

ASOS 119.275	BUFFALO APP CON 126.5 317.6	UNICOM 123.075 (CTAF) 0
-----------------	--------------------------------	----------------------------



ELEV 692	TDZE 684
----------	----------



MIRL Rwy 15-33 0
REIL Rwy 6 and 24 0
HIRL Rwy 6-24 0

Visual Segment - Obstacles.				3200	TRUNT
CATEGORY	A	B	C	D	
LNAV MDA	1140-1	456 (500-1)	1140-1 $\frac{3}{8}$	456 (500-1 $\frac{3}{8}$)	
CIRCLING	1200-1 508 (600-1)	1320-1 628 (700-1)	1640-2 $\frac{3}{4}$ 948 (1000-2 $\frac{3}{4}$)	2140-3 1448 (1500-3)	

DUNKIRK, NEW YORK

Amdt 1A 10OCT19

CHAUTAUQUA COUNTY/DUNKIRK (DKK)

42°30'N-79°16'W

RNAV (GPS) RWY 15

DUNKIRK, NEW YORK

AL-880 (FAA)

25219

APP CRS **149°**
 Rwy Ldg **4000**
 TDZE **684**
 Apt Elev **692**

RNAV (GPS) RWY 15

CHAUTAUQUA COUNTY/DUNKIRK (DKK)

RNP APCH.



-21°C

Circling to Rwy 6, 24, 33 NA at night.

Circling Cat D NA southeast of Rwy 6 and southwest of Rwy 33.

Rwy 15 helicopter visibility reduction below $\frac{3}{4}$ SM NA.

MISSED APPROACH: Climbing
 left turn to 3200 direct TRUNT
 and hold, continue climb-in-hold
 to 3200.

ASOS

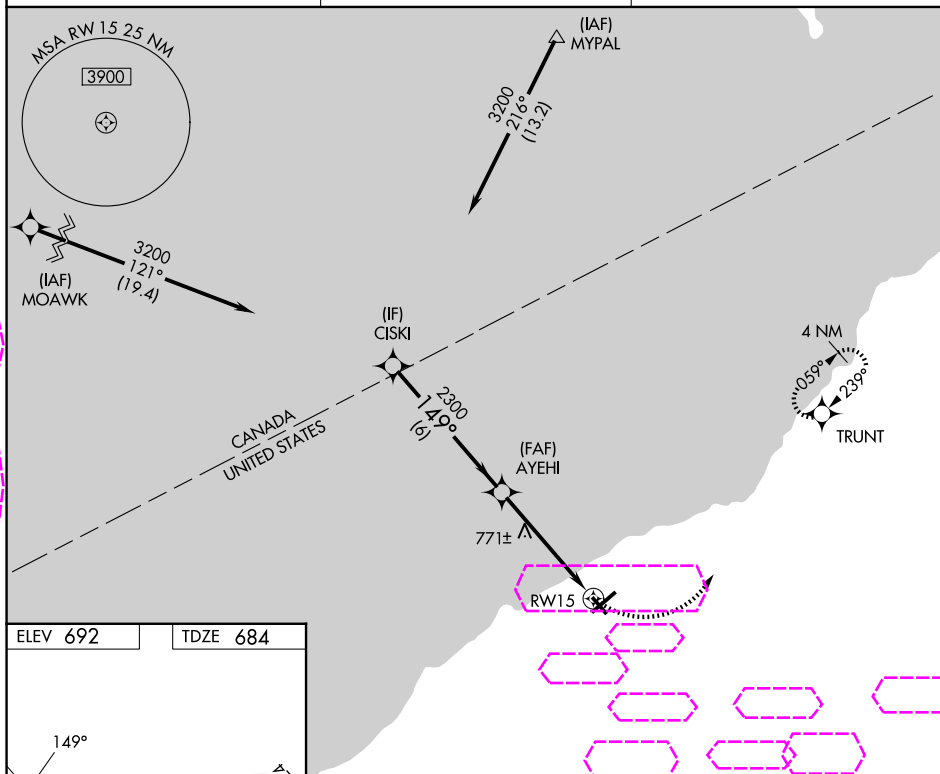
119.275

BUFFALO APP CON

126.5 317.6

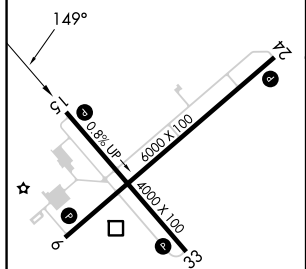
UNICOM

123.075 (CTAF) 0



ELEV 692

TDZE 684



MIRL Rwy 15-33 0

REIL Rwy 6 and 24 0

HIRL Rwy 6-24 0

DUNKIRK, NEW YORK

Amdt 1A 10OCT19

CHAUTAUQUA COUNTY/DUNKIRK (DKK)

42°30'N-79°16'W

RNAV (GPS) RWY 15

Visual Segment - Obstacles.				3200	TRUNT
				3200	
				149°	
				2300	
				1.4 NM to RWY 15	
				RWY 15	
				6 NM	3.6 NM
CATEGORY	A	B	C	D	
LNAV MDA	1140-1	456 (500-1)	1140-1 $\frac{3}{8}$	456 (500-1 $\frac{3}{8}$)	
CIRCLING	1200-1 508 (600-1)	1320-1 628 (700-1)	1640-2 $\frac{3}{4}$ 948 (1000-2 $\frac{3}{4}$)	2140-3 1448 (1500-3)	

NE-2, 07 AUG 2025 to 04 SEP 2025

NE-2, 07 AUG 2025 to 04 SEP 2025