

NE-1, 10 JUL 2025 to 07 AUG 2025

KEENE, NEW HAMPSHIRE

AL-868 (FAA)

25219

LOC I-EEN 108.9	APP CRS 018°	Rwy Ldg TDZE Apt Elev	6201 488 488
---------------------------	------------------------	-----------------------------	---

ILS or LOC RWY 2

DILLANT/HOPKINS (EEN)

DME required for LOC only.

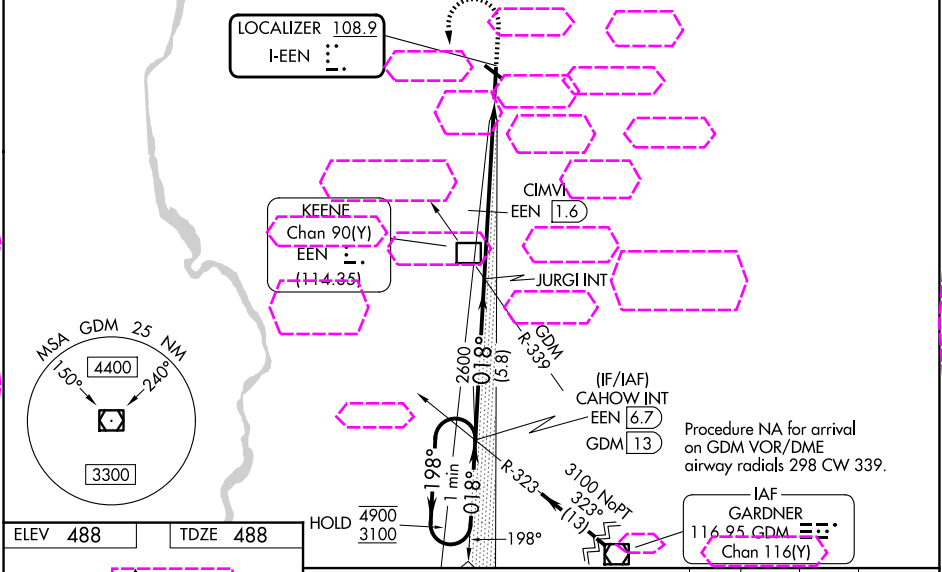
⚠ Circling Rwy 32 NA at night. Rwy 2 helicopter visibility reduction below $\frac{3}{4}$ SM NA. Inop table does not apply to S-ILS 2 all Cats, S-LOC 2 Cats C/D and CIMVI fix minimums S-LOC 2 Cat A. For inop ALS, increase S-LOC 2 Cat A visibility to $1\frac{1}{4}$ SM and increase CIMVI fix minimums S-LOC 2 Cat B visibility to $1\frac{1}{4}$ SM and Cat C/D visibility to $2\frac{1}{2}$ SM. When local altimeter setting not received, use ORE altimeter setting and increase S-ILS 2 DA to 914; increase all MDAs 60 feet and increase CIMVI fix minimums S-LOC 2 Cats C and D visibility $\frac{1}{8}$ SM. Inop table does not apply to S-LOC 2 Cats C/D when using ORE altimeter setting. For inop ALS when using ORE altimeter setting, increase S-LOC 2 Cat A visibility to $1\frac{1}{4}$ SM and increase CIMVI fix minimums S-LOC 2 Cats A/B visibility to $1\frac{1}{4}$ SM. VDP NA when using ORE altimeter setting. DME from EEN DME. DME use requires simultaneous reception of I-EEN and EEN DME.

MALSR

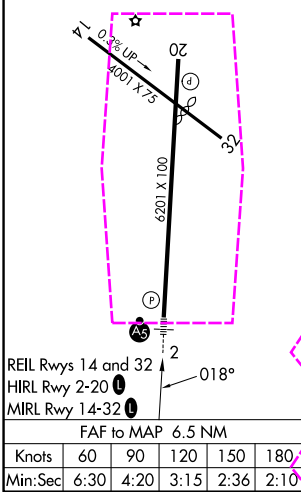
AS

MISSED APPROACH: Climb to 1540 then climbing left turn to 3100 on heading 200° and GDM VOR/DME R-323 to CAHOW INT/GDM VOR/DME 13 DME and hold.

AWOS-3PT 119.025	BOSTON CENTER 123.75 338.2	UNICOM 123.0 (CTAF)
----------------------------	--------------------------------------	-------------------------------



ELEV 488	TDZE 488
-----------------	-----------------



One Minute Holding Pattern	CAHOW INT EEN 6.7		1540 3100 ↑ hdg 200°		GDM R-323	CAHOW INT
CATEGORY	A		B	C	D	
S-ILS 02	860-1 372 (400-1)					
S-LOC 02	1840-1 1352 (1400-1)		1840-3 1352 (1400-3)			
CIRCLING	1840-1¼ 1352 (1400-1¼)		1840-1½ 1352 (1400-1½)		1840-3 1352 (1400-3)	
CIMVI FIX MINIMUMS (DME REQUIRED)						
S-LOC 02	1320-1 832 (900-1)		1320-1⅞ 832 (900-1⅞)			
CIRCLING	1420-1¼ 932 (1000-1¼)		1480-1½ 992 (1000-1½)		1760-3 1272 (1300-3)	
					1980-3 1492 (1500-3)	

KEENE, NEW HAMPSHIRE
Amdt 6A 31OCT24

42°54'N-72°16'W

DILLANT/HOPKINS (EEN)

ILS or LOC RWY 2

NE-1, 07 AUG 2025 to 04 SEP 2025

NE-1, 07 AUG 2025 to 04 SEP 2025