

LAFAYETTE, LOUISIANA

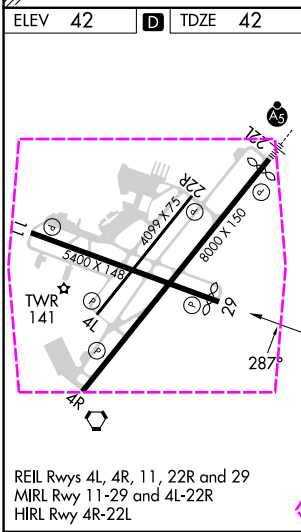
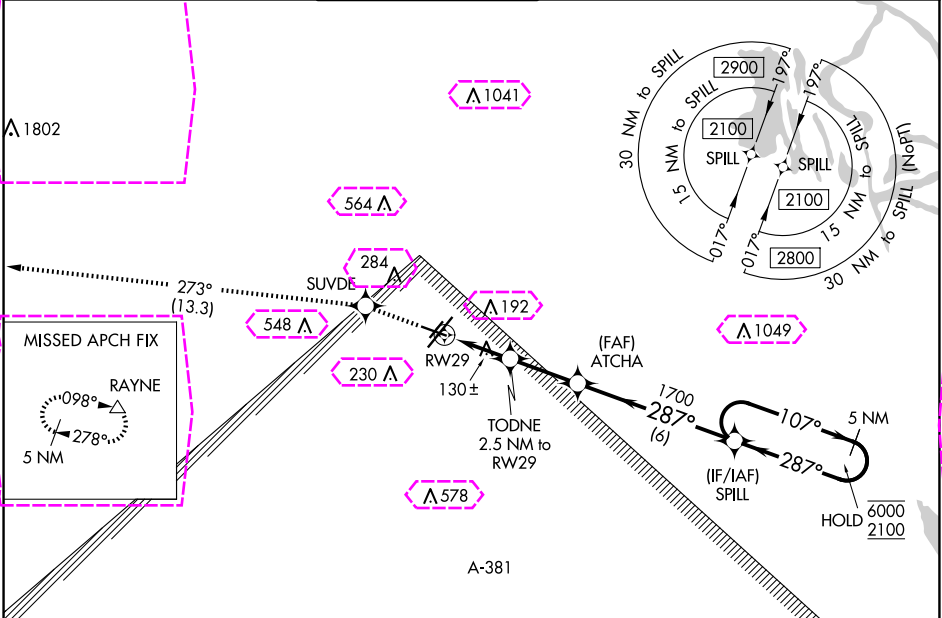
AL-865 (FAA)

24193

WAAS CH <b>45703</b> <b>W29A</b>	APP CRS <b>287°</b>	Rwy Idg <b>5150</b> TDZE <b>42</b> Apt Elev <b>42</b>
--	------------------------	---

**RNAV (GPS) RWY 29**  
LAFAYETTE RGNL/PAUL FOURNET FLD (L.F'T')

RNP APCH.				MISSED APPROACH: Climb to 2800 direct SUVDE and on track 273° to RAYNE and hold.	
Rwy 29 helicopter visibility reduction below ¾ SM NA. For uncompensated Baro-VNAV systems, LNAV/VNAV NA below -2°C or above 54°C.					
ATIS 134.05	LAFAYETTE APP CON ★ 121.1 363.0	LAFAYETTE TOWER ★ 118.5 (CTAF) 0 257.8	GND CON 121.8	CLNC DEL 125.55	UNICOM 122.95



2800	SUVDE	tr 273°	RAYNE				

LAFAYETTE, LOUISIANA

Amtd 1 20JUN19

LAFAYETTE RGNL/PAUL FOURNET FLD (L.F'T')

30°12'N-91°59'W

**RNAV (GPS) RWY 29**

LAFAYETTE, LOUISIANA

AL-865 (FAA)

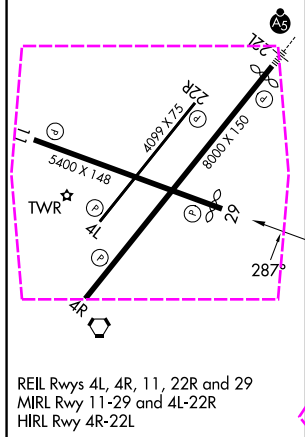
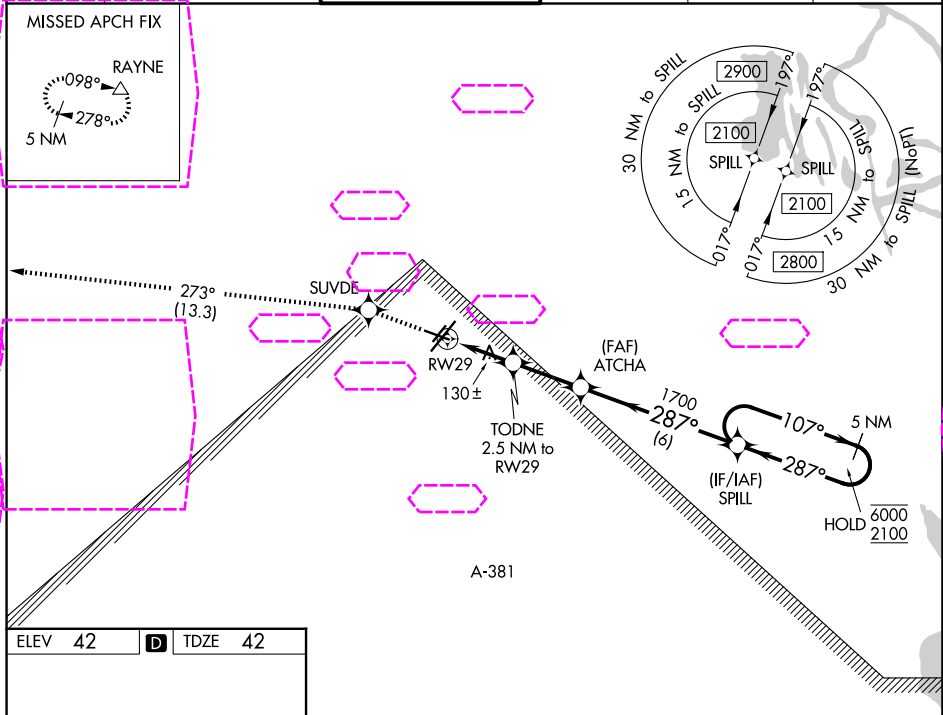
25219

WAAS CH <b>45703</b> <b>W29A</b>	APP CRS <b>287°</b>	Rwy Ldg TDZE <b>42</b> Apt Elev <b>42</b>
--	------------------------	---

# RNAV (GPS) RWY 29

LAFAYETTE RGNL/PAUL FOURNET FLD (L.F'T')

RNP APCH.			MISSED APPROACH: Climb to 2800 direct SUVDE and on track 273° to RAYNE and hold.		
<div><div>T</div><div>A</div></div> Rwy 29 helicopter visibility reduction below ¾ SM NA. For uncompensated Baro-VNAV systems, LNAV/VNAV NA below -2°C or above 54°C.					
ATIS <b>134.05</b>	LAFAYETTE APP CON ★ <b>121.1 363.0</b>	LAFAYETTE TOWER ★ <b>118.5 (CTAF) 0 257.8</b>	GND CON <b>121.8</b>	CLNC DEL <b>125.55</b>	UNICOM <b>122.95</b>



2800	SUVDE	fr 273°	RAYNE	
*LNAV only.	TODNE 2.5 NM to RWY 29	ATCHA		
*0.9 NM to RWY 29	*880	1700		
0.9	1.6	2.6 NM	6 NM	
CATEGORY	A	B	C	D
LPV DA		292-¾	250 (300-¾)	
LNAV/VNAV DA		292-¾	250 (300-¾)	
LNAV MDA		380-1	338 (400-1)	
CIRCLING	500-1 458 (500-1)	580-1 538 (600-1)	700-1¾ 658 (700-1¾)	700-2 658 (700-2)

LAFAYETTE, LOUISIANA  
Amdt 1 20JUN19

LAFAYETTE RGNL/PAUL FOURNET FLD (L.F'T')  
30°12'N-91°59'W  
**RNAV (GPS) RWY 29**

SC-4, 07 AUG 2025 to 04 SEP 2025

SC-4, 07 AUG 2025 to 04 SEP 2025