

LAFAYETTE, LOUISIANA

AL-865 (FAA)

24193

LOC/DME I-TYN <b>110.9</b> Chan <b>46</b>	APP CRS <b>036°</b>	Rwy Idg <b>8000</b> TDZE <b>40</b> Apt Elev <b>42</b>
---	------------------------	---

# ILS or LOC RWY 4R

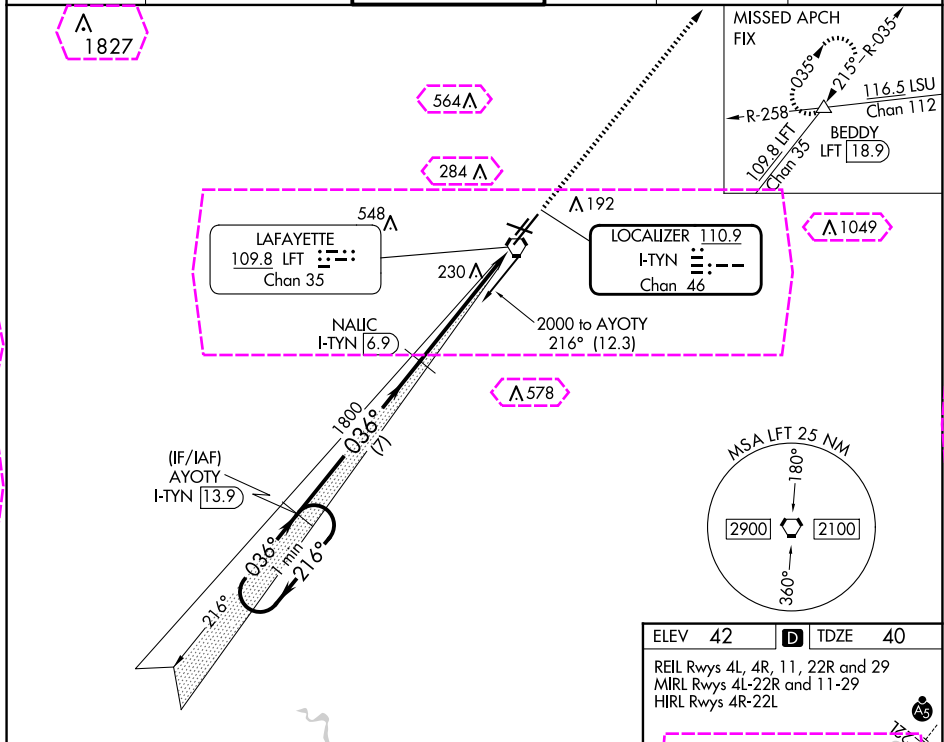
LAFAYETTE RGNL/PAUL FOURNET FLD (LFT)

DME required for procedure entry and for LOC only.

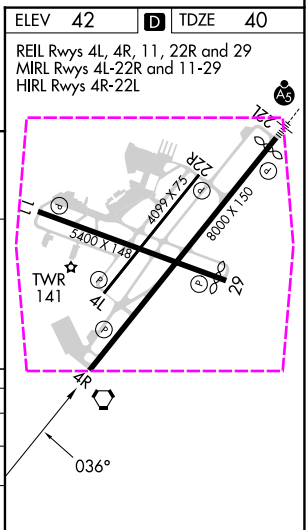
**⚠** Rwy 4R helicopter visibility reduction below  $\frac{3}{4}$  SM NA. VDP NA when using Acadiana Rgnl altimeter setting. When local altimeter setting not received, use Acadiana Rgnl altimeter setting and increase all DA 29 feet and all MDA 40 feet, increase S-ILS 4R and S-LOC 4R visibility all Cats  $\frac{1}{8}$  SM, Circling visibility Cat C/D  $\frac{1}{4}$  SM.

MISSED APPROACH: Climb to 2000 on LFT R-035 to BEDDY INT/LFT 18.9 DME and hold.

ATIS <b>134.05</b>	LAFAYETTE APP CON * <b>121.1 363.0</b>	LAFAYETTE TOWER * <b>118.5 (CTAF) 0 257.8</b>	GND CON <b>121.8</b>	CLNC DEL <b>125.55</b>	UNICOM <b>122.95</b>
-----------------------	---	--	-------------------------	---------------------------	-------------------------



One Minute Holding Pattern				
AYOTY I-TYN [13.9]				
NAUGC I-TYN [6.9]				
2000 ← 216° → 036° → 036° → 1800				
GS 3.00° TCH 49				
7 NM 4.1 NM 1.3 NM				
CATEGORY	A	B	C	D
S-ILS 4R	316-7 $\frac{7}{8}$ 276 (300- $\frac{7}{8}$ )			
S-LOC 4R	500-1 460 (500-1)		500-1 $\frac{3}{8}$ 460 (500-1 $\frac{3}{8}$ )	
<b>CIRCLING</b>	540-1 498 (500-1)	580-1 538 (600-1)	700-1 $\frac{3}{4}$ 658 (700-1 $\frac{3}{4}$ )	700-2 658 (700-2)



LAFAYETTE, LOUISIANA  
Amdt 2F 23APR20

30°12'N-91°59'W

# LAFAYETTE RGNL/PAUL FOURNET FLD (LFT)

## ILS or LOC RWY 4R

SC-4, 10 JUL 2025 to 07 AUG 2025

SC-4, 10 JUL 2025 to 07 AUG 2025

LAFAYETTE RGNL/PAUL FOURNET FLD (LFT)  
W ILS or LOC RWY 4R