

LAFAYETTE, LOUISIANA

AL-865 (FAA)

24193

LOC/DME I-LFT	APP CRS	Rwy Idg	7659
109.5	216°	TDZE	38
Chan 32		Apt Elev	42

# ILS or LOC RWY 22L

LAFAYETTE RGNL/PAUL FOURNET FLD (LFT)

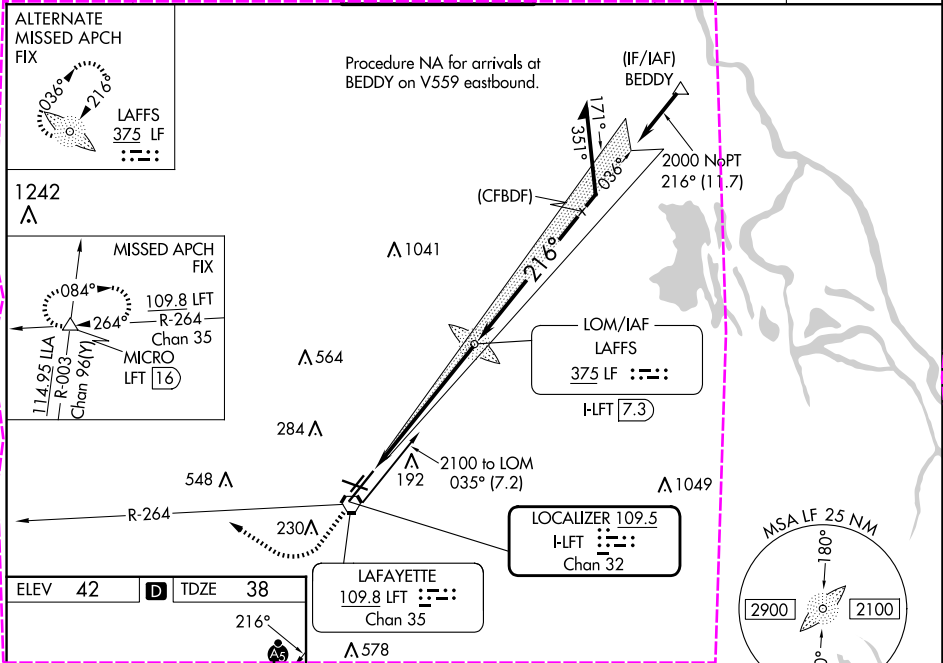
**VDP NA** with Acadiana Rgnl altimeter setting. When local altimeter setting not received, use Acadiana Rgnl altimeter setting and increase DA to 267 feet; increase all MDA 40 feet and S-LOC 22L visibility Cat C/D to RVR 5000 and Circling visibility Cat C/D ¼ SM. For inop MALSR when using Acadiana Rgnl altimeter setting, increase S-LOC 22L Cat C and D visibility to 1½ mile.

**\*\*RVR 1800** authorized with use of FD or AP or HUD to DA (NA when using Acadiana Rgnl altimeter setting).

**MALSR**  
A5

**MISSED APPROACH:**  
Climb to 800 then climbing right turn to 2100 on LFT VORTAC R-264 to MICRO INT/ LFT 16 DME and hold.

ATIS	LAFAYETTE APP CON *	LAFAYETTE TOWER *	GND CON	CLNC DEL	UNICOM
134.05	121.1 363.0	118.5 (CTAF) 0 257.8	121.8	125.55	122.95



ELEV 42 TDZE 38

216°

REIL Rwy 4L, 4R, 11, 22R and 29  
MIRL Rwy 11-29 and 4L-22R  
HIRL Rwy 4R-22L

FAF to MAP 5.9 NM

Knots	60	90	120	150	180
Min:Sec	5:54	3:56	2:57	2:22	1:58

**CIRCLING**

800 ↑	2100 ↘ LFT R-264	MICRO △	LAFFS LOM I-LFT 7.3 VGSI and ILS glidepath not coincident (VGSI Angle 3.00°/TCH 50). Remain within 10 NM		
*LOC only.		*I-LFT 2.6	1996	036° 216° 2100	
I-LFT 1.4		1.2	4.7 NM	2000 GS 3.00° TCH 54	
CATEGORY		A	B	C	D
S-ILS 22L**		238/24		200 (200-½)	
S-LOC 22L		480/24	442 (500-½)	480/45	442 (500-¾)
C CIRCLING		540-1 498 (500-1)	580-1 538 (600-1)	700-1¾ 658 (700-1¾)	700-2 658 (700-2)

LAFAYETTE, LOUISIANA  
Amdt 5E 23APR20

LAFAYETTE RGNL/PAUL FOURNET FLD (LFT)  
30°12'N-91°59'W  
**ILS or LOC RWY 22L**

SC-4, 10 JUL 2025 to 07 AUG 2025

SC-4, 10 JUL 2025 to 07 AUG 2025

LAFAYETTE, LOUISIANA

AL-865 (FAA)

25219

LOC/DME I-LFT	APP CRS	Rwy Ldg	7659
109.5	216°	TDZE	38
Chan 32		Apt Elev	42

# ILS or LOC RWY 22L

LAFAYETTE RGNL/PAUL FOURNET FLD (LFT)

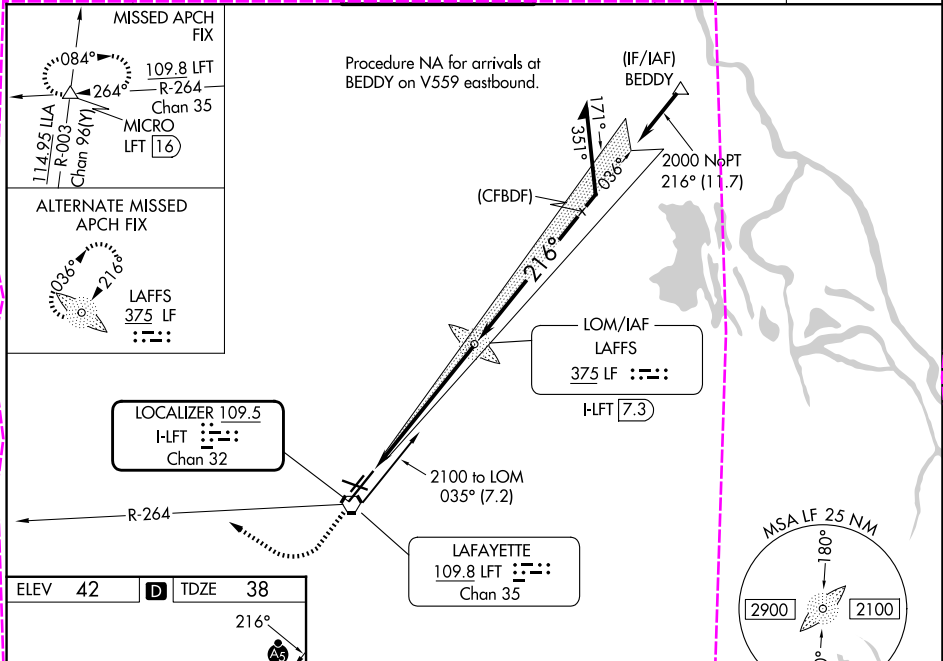
**VDP NA** with Acadiana Rgnl altimeter setting. When local altimeter setting not received, use Acadiana Rgnl altimeter setting and increase DA to 267 feet; increase all MDA 40 feet and S-LOC 22L visibility Cat C/D to RVR 5000 and Circling visibility Cat C/D ¼ SM. For inop MALSR when using Acadiana Rgnl altimeter setting, increase S-LOC 22L Cat C and D visibility to 1½ mile.

**\*\*RVR 1800** authorized with use of FD or AP or HUD to DA (NA when using Acadiana Rgnl altimeter setting).

**MALSR**  
A5

**MISSED APPROACH:**  
Climb to 800 then climbing right turn to 2100 on LFT VORTAC R-264 to MICRO INT/ LFT 16 DME and hold.

ATIS	LAFAYETTE APP CON *	LAFAYETTE TOWER *	GND CON	CLNC DEL	UNICOM
134.05	121.1 363.0	118.5 (CTAF) 0 257.8	121.8	125.55	122.95



ELEV 42	D	TDZE 38
---------	---	---------

216°

800 2100 MICRO

LFT R-264

\*LOC only.

\*I-FT 2.6

I-FT 1.4

1996

036° 216° 2100

2000

GS 3.00° TCH 54

1.2 4.7 NM

CATEGORY	A	B	C	D
S-ILS 22L**	238/24	200 (200-½)	480/45	442 (500-¾)
S-LOC 22L	480/24	442 (500-½)	480/45	442 (500-¾)
	540-1	580-1	700-1¾	700-2
	498 (500-1)	538 (600-1)	658 (700-1¾)	658 (700-2)

REIL Rwy 4L, 4R, 11, 22R and 29

MIRL Rwy 11-29 and 4L-22R

HIRL Rwy 4R-22L

FAF to MAP 5.9 NM

Knots	60	90	120	150	180
Min:Sec	5:54	3:56	2:57	2:22	1:58

**CIRCLING**

LAFAYETTE, LOUISIANA  
Amdt 5E 23APR20

LAFAYETTE RGNL/PAUL FOURNET FLD (LFT)  
30°12'N-91°59'W  
**ILS or LOC RWY 22L**

SC-4, 07 AUG 2025 to 04 SEP 2025

SC-4, 07 AUG 2025 to 04 SEP 2025