

LEBANON, NEW HAMPSHIRE

AL-859 (FAA)

24081

APP CRS	Rwy Idg	5496
060°	TDZE	564
	Apt Elev	603

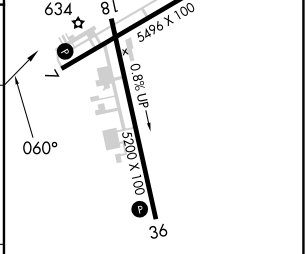
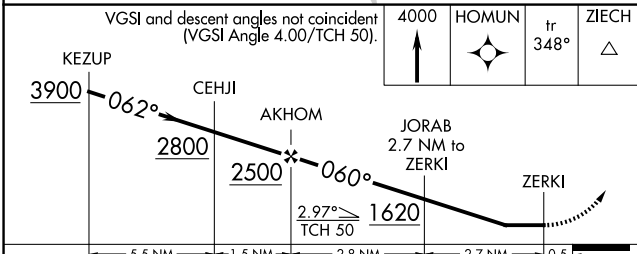
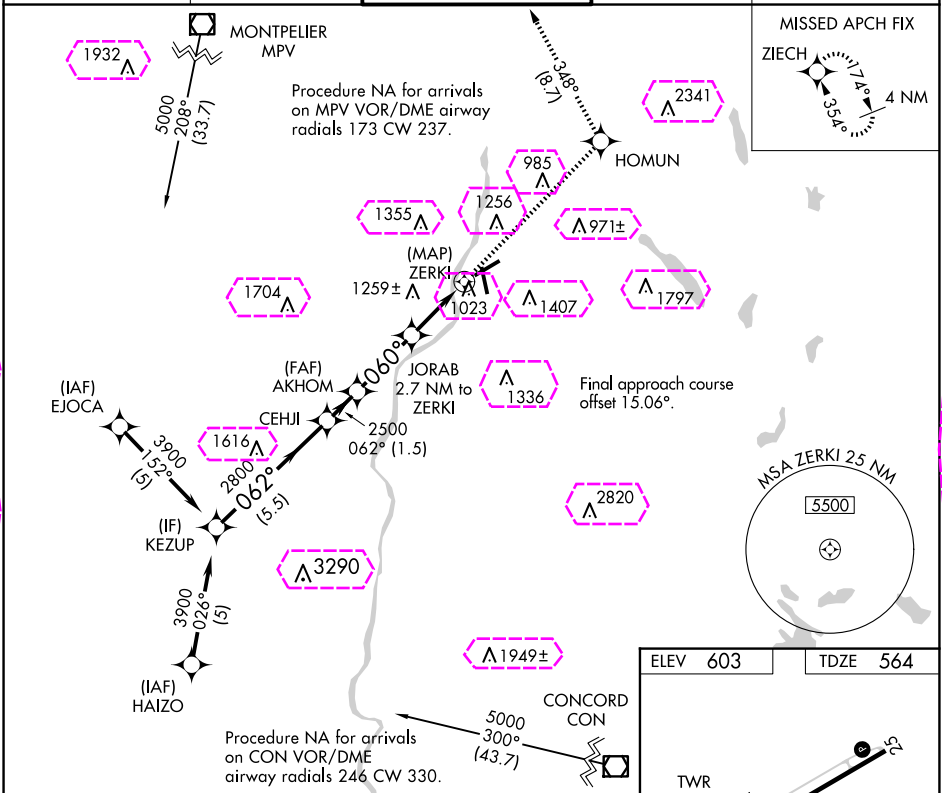
# RNAV (GPS) RWY 7

LEBANON MUNI (LEB)

Rwy 7 helicopter visibility reduction below 3/4 SM NA.  
DME/DME RNP-0.3 NA.

MISSED APPROACH: Climb to 4000 direct HOMUN and on track 348° to ZIECH and hold.

ATIS 118.65	BOSTON CENTER 134.7 269.475	LEBANON TOWER ★ 125.95 (CTAF) 235.775	GND CON 121.6	UNICOM 122.95
----------------	--------------------------------	--	------------------	------------------



CATEGORY	A	B	C	D
LNNAV MDA	1460-1 1/4	896 (900-1 1/4)	1460-2 3/4	1460-3
			896 (900-2 3/4)	896 (900-3)
CIRCLING	1640-1 1/4	1740-1 1/2	1880-3	2020-3
	1037 (1100-1 1/4)	1137 (1200-1 1/2)	1277 (1300-3)	1417 (1500-3)

LEBANON, NEW HAMPSHIRE  
Orig-F 23APR20

43°38'N-72°18'W

LEBANON MUNI (LEB)  
RNAV (GPS) RWY 7

NE-1, 10 JUL 2025 to 07 AUG 2025

NE-1, 10 JUL 2025 to 07 AUG 2025

APP CRS	Rwy Ldg	5496
060°	TDZE	564
	Apt Elev	603

RNAV (GPS) RWY 7  
LEBANON MUNI (LEB)

Rwy 7 helicopter visibility reduction below  $\frac{3}{4}$  SM NA.  
DME/DME RNP-0.3 NA.

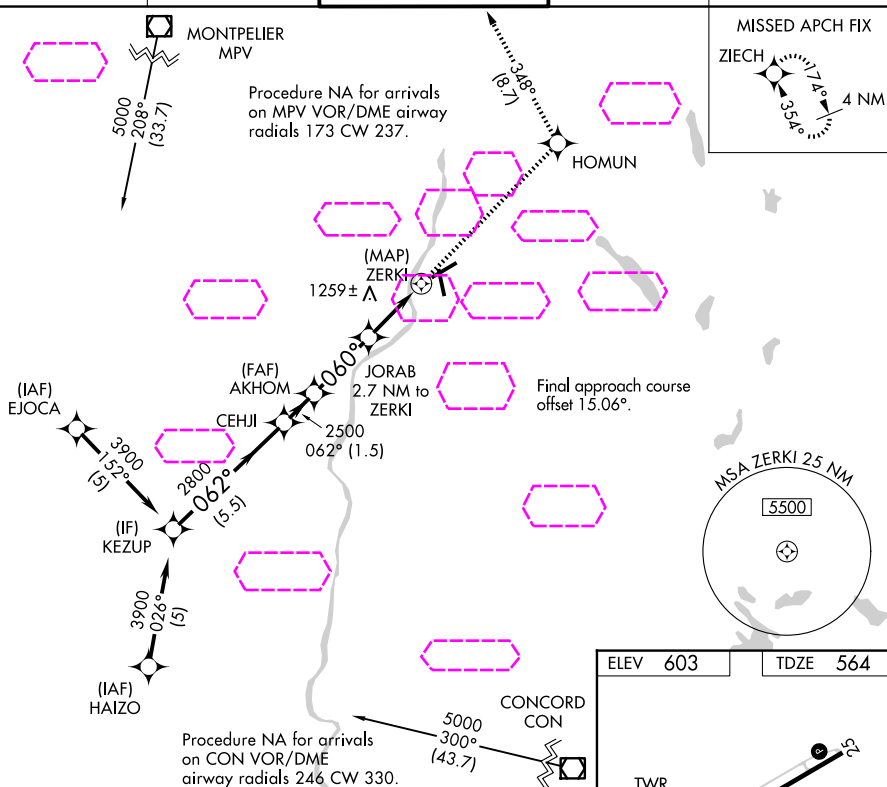
**MISSED APPROACH:** Climb to 4000 direct HOMUN and on track 348° to ZIECH and hold.

ATIS  
**118.65**

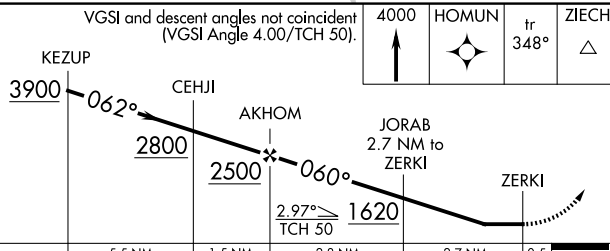
BOSTON CENTER  
134.7 269.475

LEBANON TOWER ★  
125.95 (CTAF) ● 235.775

GND CON  
**121.6**

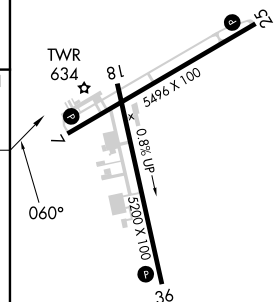
UNICOM  
122.95

VGSI and descent angles not coincident  
(VGSI Angle 4.00/TCH 50).



CATEGORY	A	B	C	D
LNAV MDA	1460-1¼	896 (900-1¼)	1460-2¾ 896 (900-2¾)	1460-3 896 (900-3)
CIRCLING	1640-1¼ 1037 (1100-1¼)	1740-1½ 1137 (1200-1½)	1880-3 1277 (1300-3)	2020-3 1417 (1500-3)

ELEV	603		TDZE	564
------	-----	--	------	-----



MIRL Rwy 7-25 **L**  
HIRL Rwy 18-36 **L**  
REIL Rwy 7 and 25 **L**  
REIL Rwy 18

LEBANON, NEW HAMPSHIRE  
Orig-F 23APR20

43°38'N-72°18'W

LEBANON MUNI (LEB)  
RNAV (GPS) RWY 7

NE-1, 07 AUG 2025 to 04 SEP 2025