

LEBANON, NEW HAMPSHIRE


AL-859 (FAA)

24081

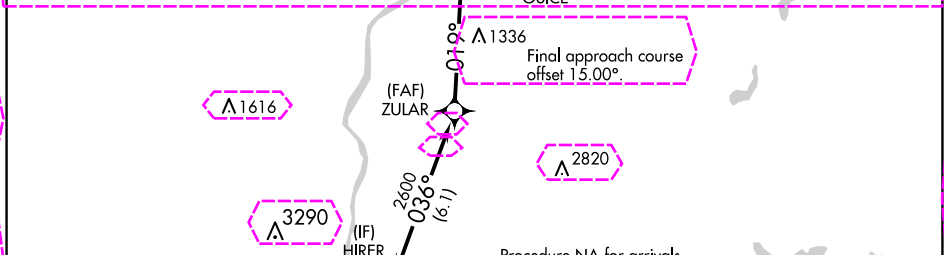
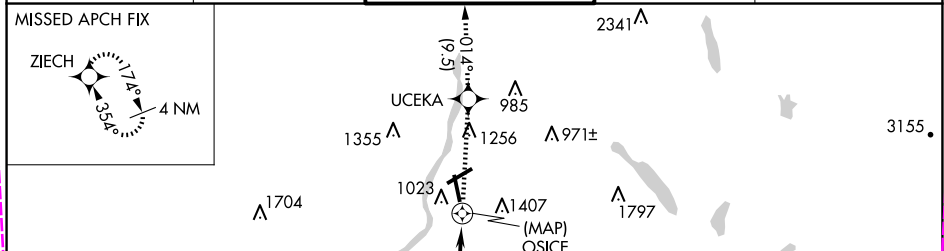
APP CRS	Rwy Idg	5200
019°	TDZE	603
	Apt Elev	603

RNAV (GPS) RWY 36

LEBANON MUNI (LEB)

 Rwy 36 helicopter visibility reduction below ¾ SM NA. DME/DME RNP-0.3 NA.	MISSED APPROACH: Climb to 4000 direct UCEKA then on track 014° to ZIECH and hold.
--	--

ATIS 118.65	BOSTON CENTER 134.7 269.475	LEBANON TOWER ★ 125.95 (CTAF) 235.775	GND CON 121.6	UNICOM 122.95
----------------	--------------------------------	--	------------------	------------------

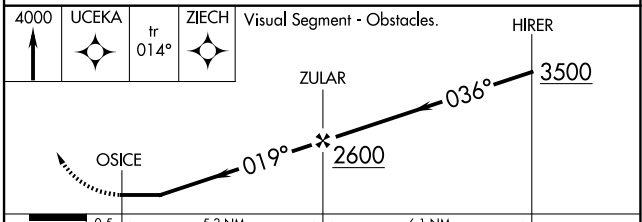
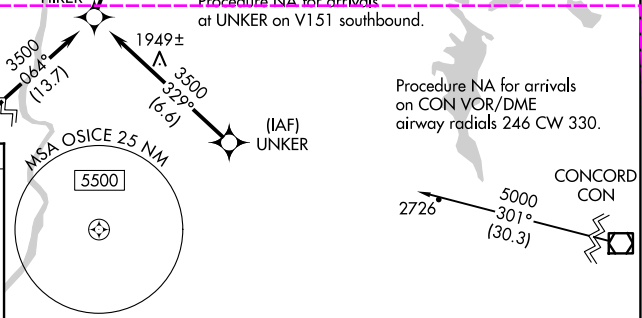
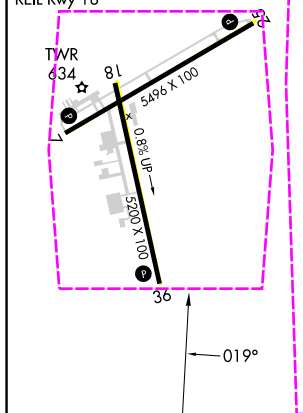


Procedure NA for arrivals at JAMMA on V542 southwest bound.

Procedure NA for arrivals at UNKER on V151 southbound.

Procedure NA for arrivals on CON VOR/DME airway radials 246 CW 330.

ELEV 603	TDZE 603
MIRL Rwy 7-25	
HIRL Rwy 18-36	
REIL Rwys 7 and 25	
REIL Rwy 18	



CATEGORY	A	B	C	D
LNAV MDA	1740-1¼ 1137 (1200-1¼)	1740-1½ 1137 (1200-1½)	1740-3	1137 (1200-3)
CIRCLING	1740-1¼ 1137 (1200-1¼)	1740-1½ 1137 (1200-1½)	1880-3 1277 (1300-3)	2020-3 1417 (1500-3)

LEBANON, NEW HAMPSHIRE

Orig-D 23APR20

LEBANON MUNI (LEB)

43°38'N - 72°18'W

RNAV (GPS) RWY 36

LEBANON, NEW HAMPSHIRE

AL-859 (FAA)

25219

APP CRS	Rwy Ldg	5200
019°	TDZE	603
	Apt Elev	603

RNAV (GPS) RWY 36

LEBANON MUNI (LEB)

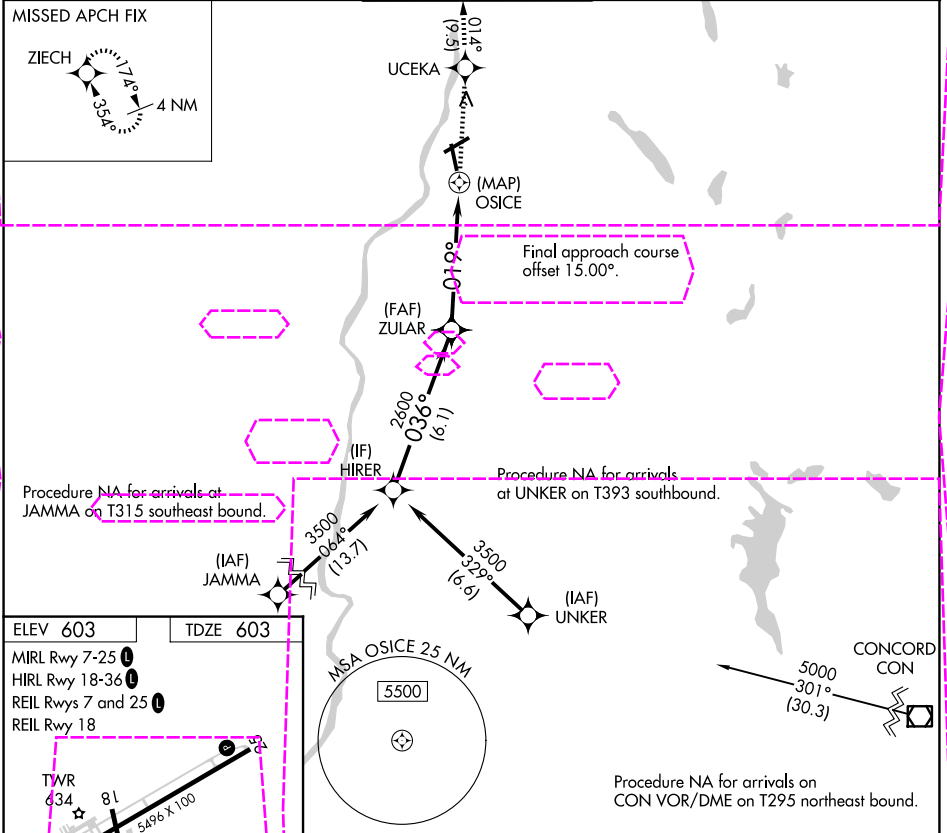
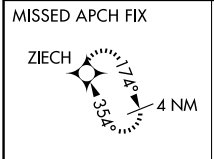
RNP APCH - GPS.

Rwy 36 helicopter visibility reduction below 3/4 SM NA.

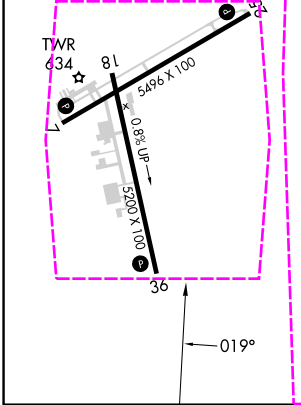
-19°C

MISSED APPROACH: Climb to 4000 direct UCEKA then on track 014° to ZIECH and hold.

ATIS 118.65	BOSTON CENTER 134.7 269.475	LEBANON TOWER ★ 125.95 (CTAF) 235.775	GND CON 121.6	UNICOM 122.95
----------------	--------------------------------	--	------------------	------------------



ELEV 603	TDZE 603
MIRL Rwy 7-25	
HIRL Rwy 18-36	
REIL Rwys 7 and 25	
REIL Rwy 18	



Visual Segment - Obstacles.			
4000	UCEKA	tr 014°	ZIECH
3500	HIRER	2600	OSICE
036°	019°		
6.1 NM	5.3 NM	0.5	
CATEGORY	A	B	C
LNAV MDA	1740-1 1/4 1137 (1200-1 1/4)	1740-1 1/2 1137 (1200-1 1/2)	1740-3 1137 (1200-3)

LEBANON, NEW HAMPSHIRE

Orig-E 07AUG25

43°38'N-72°18'W

LEBANON MUNI (LEB)

RNAV (GPS) RWY 36

NE-1, 07 AUG 2025 to 04 SEP 2025

NE-1, 07 AUG 2025 to 04 SEP 2025