

RNAV (GPS) RWY 25
LEBANON MUNI (LEB)

APP CRS 255°	Rwy Idg 5496 TDZE 574 Apt Elev 603
------------------------	---

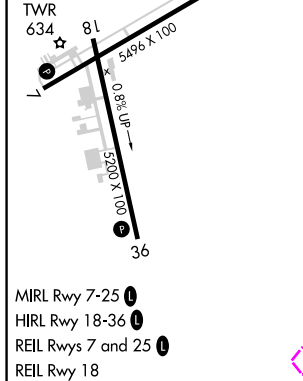
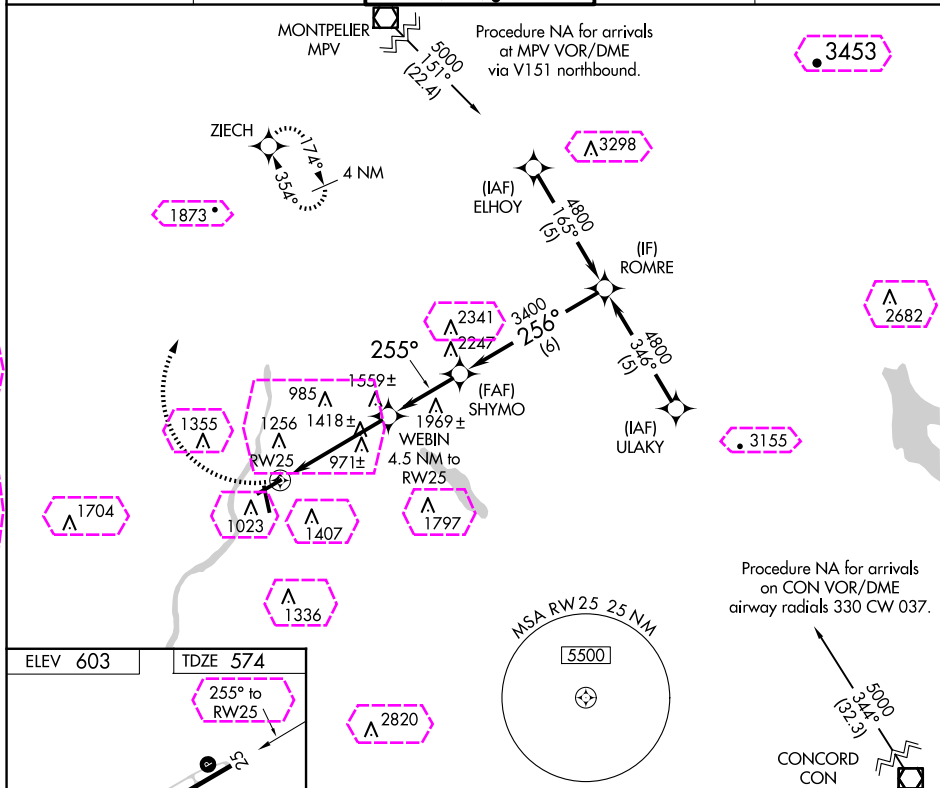
RNP APCH.



Rwy 25 helicopter visibility reduction below 1 SM NA.

MISSED APPROACH: Climbing right turn to 4000 direct ZIEH and hold.

ATIS 118.65	BOSTON CENTER 134.7 269.475	LEBANON TOWER ★ 125.95 (CTAF) 0 235.775	GND CON 121.6	UNICOM 122.95
----------------	--------------------------------	--	------------------	------------------



CATEGORY	A	B	C	D
LNAV MDA	1680-1½ 1106 (1100-1½)	1680-1½ 1106 (1100-1½)	1680-3	1106 (1100-3)
CIRCLING	1680-1½ 1077 (1100-1½)	1740-1½ 1137 (1200-1½)	1880-3 1277 (1300-3)	2020-3 1417 (1500-3)

LEBANON, NEW HAMPSHIRE

Orig-D 15AUG19

43°38'N - 72°18'W

LEBANON MUNI (LEB)

RNAV (GPS) RWY 25

LEBANON, NEW HAMPSHIRE

AL-859 (FAA)

25219

APP CRS	Rwy Ldg	5496
255°	TDZE	574
	Apt Elev	603

RNAV (GPS) RWY 25

LEBANON MUNI (LEB)

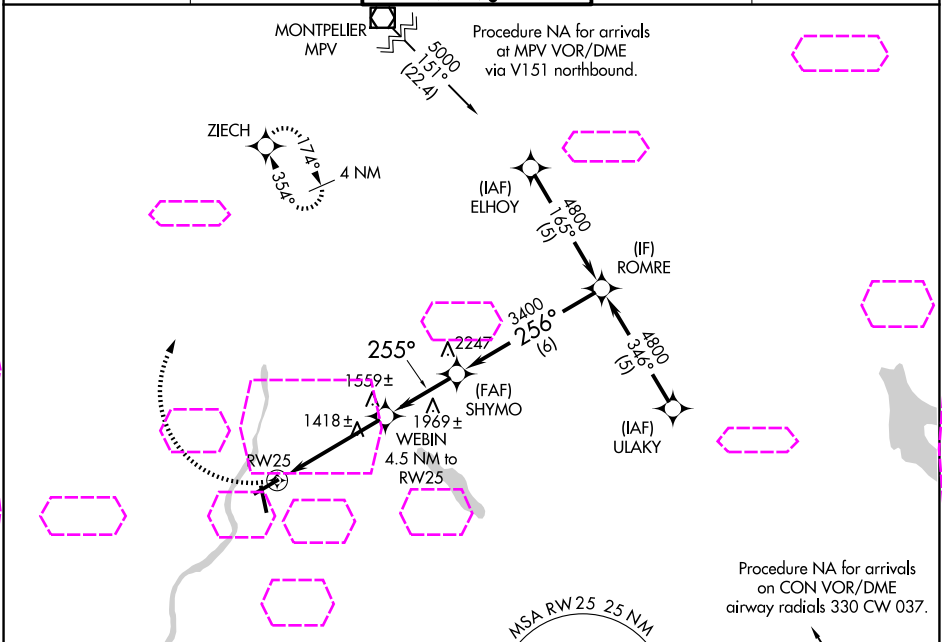
RNP APCH.

Rwy 25 helicopter visibility reduction below 1 SM NA.

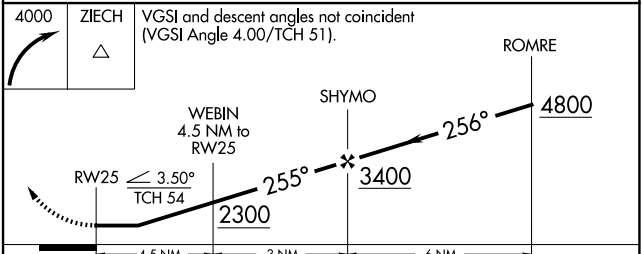
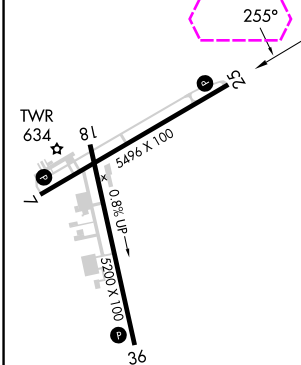
-19°C

MISSED APPROACH: Climbing right turn to 4000 direct ZIECH and hold.

ATIS 118.65	BOSTON CENTER 134.7 269.475	LEBANON TOWER ★ 125.95 (CTAF) 0 235.775	GND CON 121.6	UNICOM 122.95
----------------	--------------------------------	--	------------------	------------------



ELEV 603	TDZE 574
----------	----------



- MIRL Rwy 7-25 1
- HIRL Rwy 18-36 1
- REIL Rwy 7 and 25 1
- REIL Rwy 18

CATEGORY	A	B	C	D
LNNAV MDA	1680-1¼ 1106 (1100-1¼)	1680-1½ 1106 (1100-1½)	1680-3	1106 (1100-3)
CIRCLING	1680-1¼ 1077 (1100-1¼)	1740-1½ 1137 (1200-1½)	1880-3 1277 (1300-3)	2020-3 1417 (1500-3)

LEBANON, NEW HAMPSHIRE
Orig-D 15AUG19

43°38'N - 72°18'W

RNAV (GPS) RWY 25

NE-1, 07 AUG 2025 to 04 SEP 2025

NE-1, 07 AUG 2025 to 04 SEP 2025