

RNAV (GPS) RWY 18  
LEBANON MUNI (LEB)

RNP APCH.

**A** Rwy 18 helicopter visibility reduction below  $\frac{3}{4}$  SM NA.

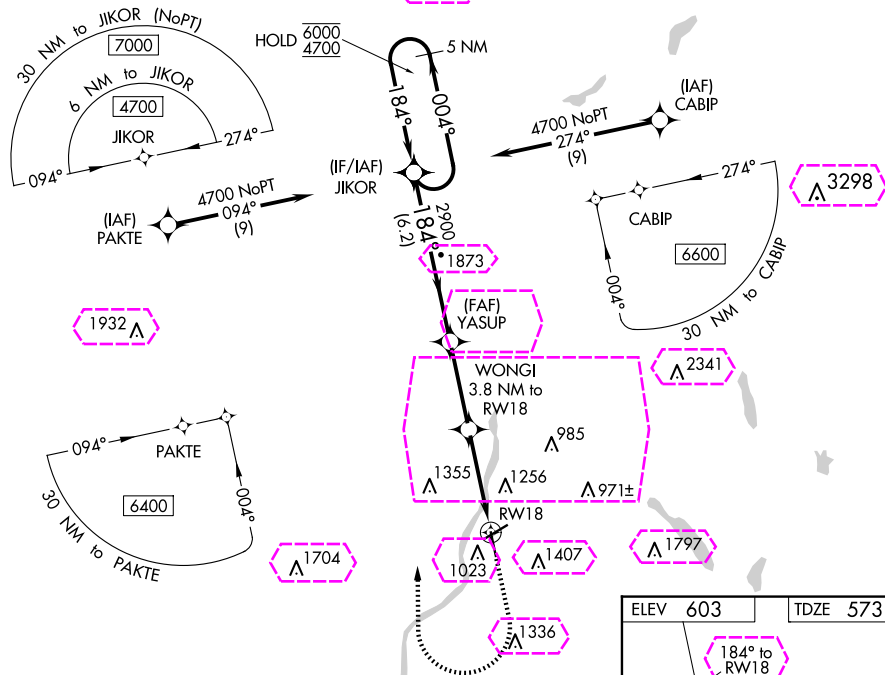
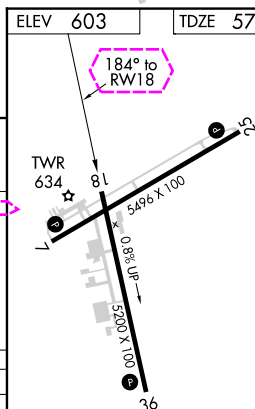
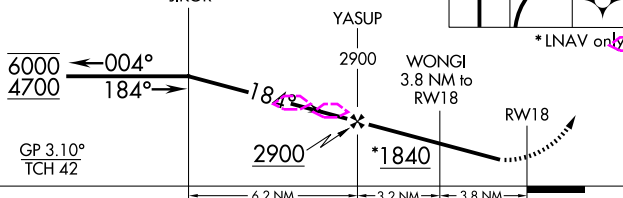
**MISSED APPROACH:** Climb to 2050 then climbing right turn to 4700 direct JIKOR and hold, continue climb in hold to 4700.

ATIS  
118.65

BOSTON CENTER  
134.7 269.475

LEBANON TOWER ★  
125.95 (CTAF) 235.775

GND CON  
**121.6**

UNICOM  
122.955 NM  
Holding Pattern JIKOR

CATEGORY	A	B	C	D
LPV DA	933-1 360 (400-1)			
LNAV MDA	1700-1¼ 1127 (1100-¾)	1700-1½ 1127 (1100-½)	1700-3	1127 (1100-3)
<b>C CIRCLING</b>	1700-1¼ 1097 (1100-¾)	1720-1½ 1117 (1200-½)	1820-3 1217 (1300-3)	2020-3 1417 (1500-3)

LEBANON, NEW HAMPSHIRE

Amdt 1 23APR20

43°38'N-72°18'W

LEBANON MUNI (LEB)

RNAV (GPS) RWY 18

MIRL Rwy 7-25 **L**  
HIRL Rwy 18-36 **L**  
REIL Rwys 7 and 25 **L**  
REIL Rwy 18

NE-1, 10 JUL 2025 to 07 AUG 2025

NE-1, 10 JUL 2025 to 07 AUG 2025

LEBANON, NEW HAMPSHIRE

AL-859 (FAA)



25219

WAAS CH <b>93710</b> <b>W18A</b>	APP CRS <b>184°</b>	Rwy Ldg TDZE Apt Elev	<b>5200</b> <b>573</b> <b>603</b>
--	------------------------	-----------------------------	---

# RNAV (GPS) RWY 18

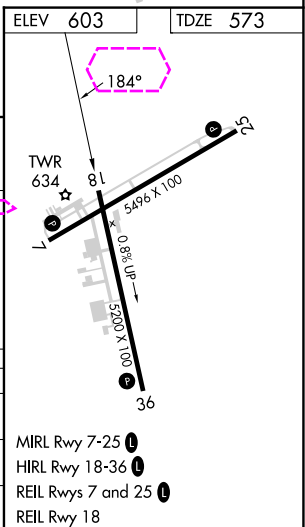
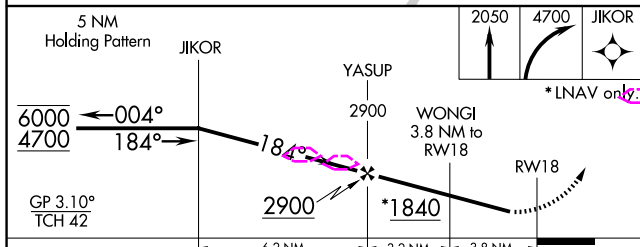
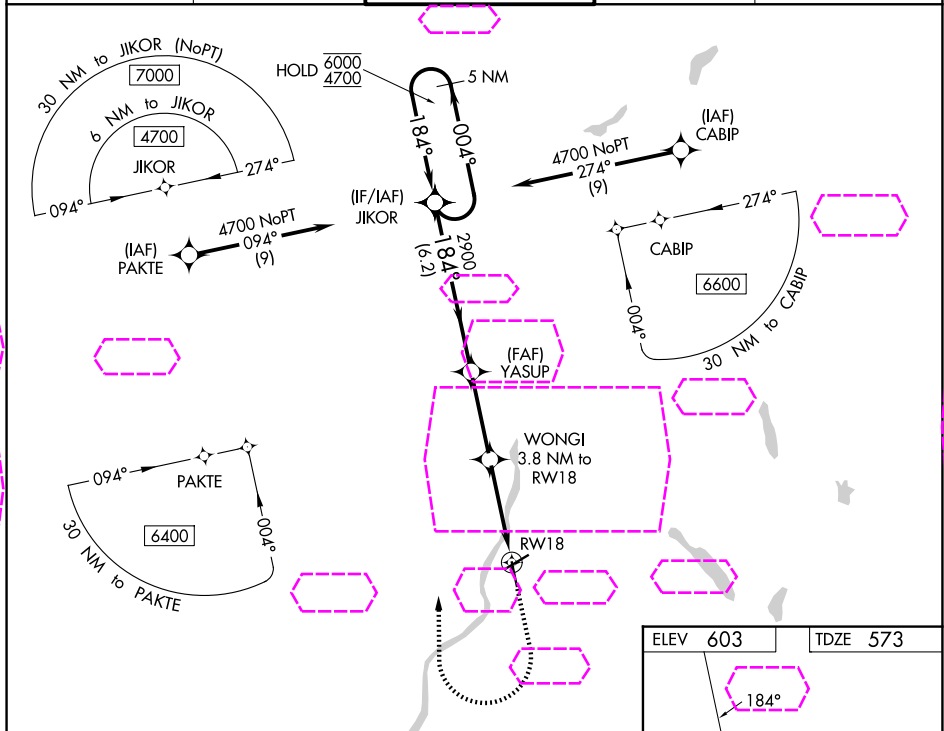
LEBANON MUNI (L'EB)

RNP APCH.

 Rwy 18 helicopter visibility reduction below 3/4 SM NA.  
 -19°C

MISSED APPROACH: Climb to 2050 then climbing right turn to 4700 direct JIKOR and hold, continue climb in hold to 4700.

ATIS <b>118.65</b>	BOSTON CENTER <b>134.7 269.475</b>	LEBANON TOWER ★ <b>125.95 (CTAF) 0 235.775</b>	GND CON <b>121.6</b>	UNICOM <b>122.95</b>
-----------------------	---------------------------------------	---	-------------------------	-------------------------



CATEGORY	A	B	C	D
LPV DA	933-1	360 (400-1)		
LNAV MDA	1700-1¼ 1127 (1100-1¼)	1700-1½ 1127 (1100-1½)	1700-3 1127 (1100-3)	1700-3 1127 (1100-3)
CIRCLING	1700-1¼ 1097 (1100-1¼)	1720-1½ 1117 (1200-1½)	1820-3 1217 (1300-3)	2020-3 1417 (1500-3)

LEBANON, NEW HAMPSHIRE

Amdt 1 23APR20

43°38'N-72°18'W

LEBANON MUNI (L'EB)

# RNAV (GPS) RWY 18