

LEBANON, NEW HAMPSHIRE

AL-859 (FAA)

22083

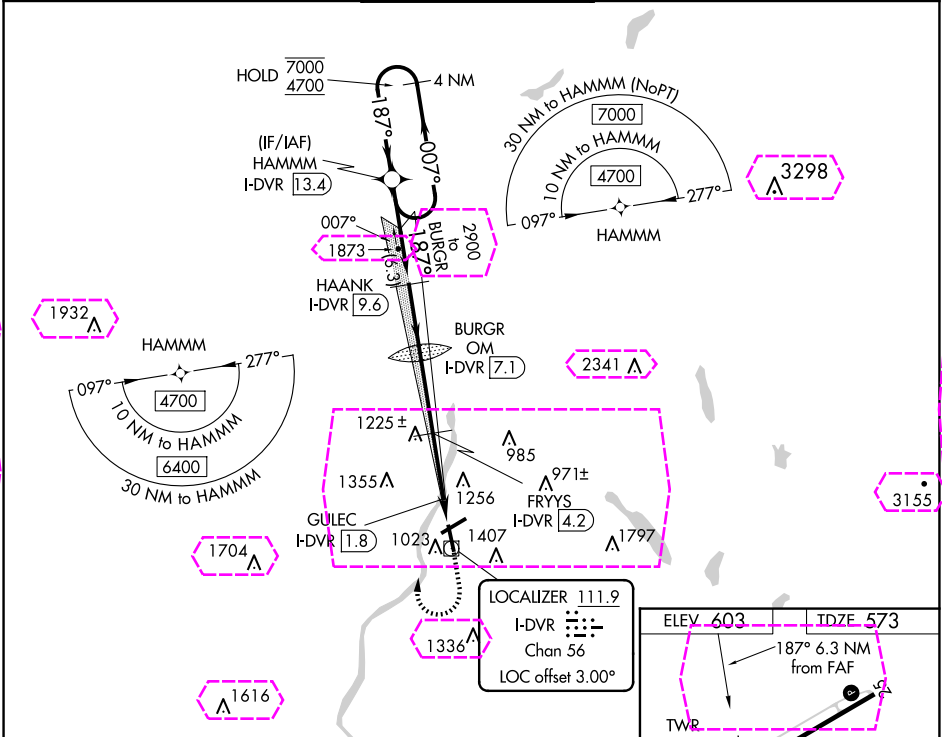
LOC/DME I-DVR 111.9 Chan 56	APP CRS 187°	Rwy Idg 5200 TDZE 573 Apt Elev 603
---	------------------------	---

ILS or LOC RWY 18

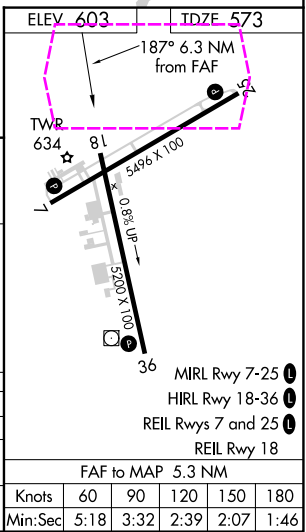
LEBANON MUNI (LEB)

DME required. RNP APCH-GPS.	MISSED APPROACH: Climb to 2100 then climbing right turn to 4700 direct HAMMM and hold, continue climb-in-hold to 4700.
Autopilot coupled approach NA below 750.	

ATIS 118.65	BOSTON CENTER 134.7 269.475	LEBANON TOWER ★ 125.95 (CTAF) 235.775	GND CON 121.6	UNICOM 122.95
-----------------------	---------------------------------------	---	-------------------------	-------------------------



4 NM Holding Pattern	HAMMM I-DVR 13.4	HAANK I-DVR 9.6	BURGR OM I-DVR 7.1	FRYYS I-DVR 4.2	GULEC I-DVR 1.8
7000 4700	←007°→	187°→	187°	3500	2900
GS 3.10° TCH 42					
CATEGORY	A	B	C	D	
S-ILS 18		915-1	342 (400-1)		
S-LOC 18	1320-1¼	747 (800-1¼)	1320-2	747 (800-2)	
CIRCLING	1640-1¼ 1037 (1100-1¼)	1720-1½ 1117 (1200-1½)	1820-3 1217 (1300-3)	2020-3 1417 (1500-3)	



LEBANON, NEW HAMPSHIRE
Amdt 8 27JAN22

43°38'N-72°18'W

LEBANON MUNI (LEB)
ILS or LOC RWY 18

NE-1, 10 JUL 2025 to 07 AUG 2025

NE-1, 10 JUL 2025 to 07 AUG 2025

LEBANON, NEW HAMPSHIRE

AL-859 (FAA)

25219

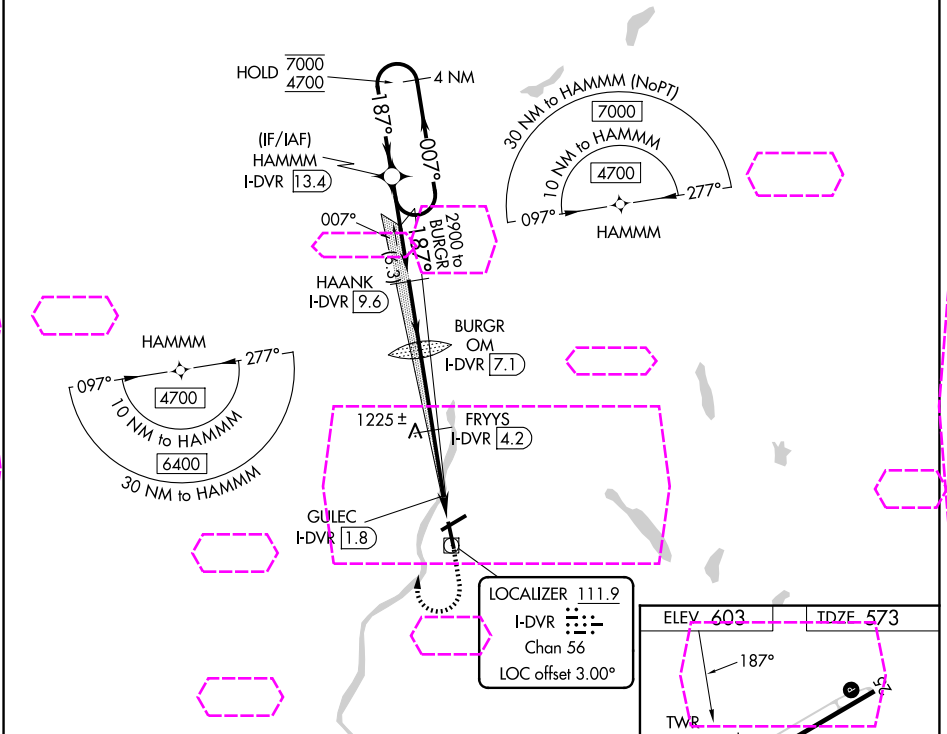
LOC/DME I-DVR 111.9 Chan 56	APP CRS 187°	Rwy Ldg 5200 TDZE 573 Apt Elev 603
---	------------------------	---

ILS or LOC RWY 18

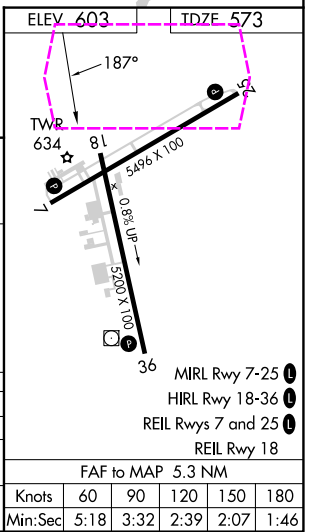
LEBANON MUNI (LEB)

DME required. RNP APCH - GPS.	MISSED APPROACH: Climb to 2100 then climbing right turn to 4700 direct HAMMM and hold, continue climb-in-hold to 4700.
Autopilot coupled approach NA below 750.	

ATIS 118.65	BOSTON CENTER 134.7 269.475	LEBANON TOWER ★ 125.95 (CTAF) 235.775	GND CON 121.6	UNICOM 122.95
-----------------------	---------------------------------------	---	-------------------------	-------------------------



4 NM Holding Pattern	HAMMM I-DVR 13.4	HAANK I-DVR 9.6	BURGR OM I-DVR 7.1	FRYYS I-DVR 4.2	GULEC I-DVR 1.8
7000 4700	007°	187°	187°	187°	187°
GS 3.10° TCH 42					
	3.8 NM	2.5 NM	2.9 NM	0.6 NM	1 NM
CATEGORY	A	B	C	D	
S-ILS 18	915-1		342 (400-1)		
S-LOC 18	1320-1¼	747 (800-1¼)	1320-2	747 (800-2)	
CIRCLING	1640-1¼ 1037 (1100-1¼)	1720-1½ 1117 (1200-1½)	1820-3 1217 (1300-3)	2020-3 1417 (1500-3)	



LEBANON, NEW HAMPSHIRE
Amdt 8 27JAN22

43°38'N-72°18'W

LEBANON MUNI (LEB)
ILS or LOC RWY 18

NE-1, 07 AUG 2025 to 04 SEP 2025

NE-1, 07 AUG 2025 to 04 SEP 2025