

PASO ROBLES, CALIFORNIA

AL-858 (FAA)

20254

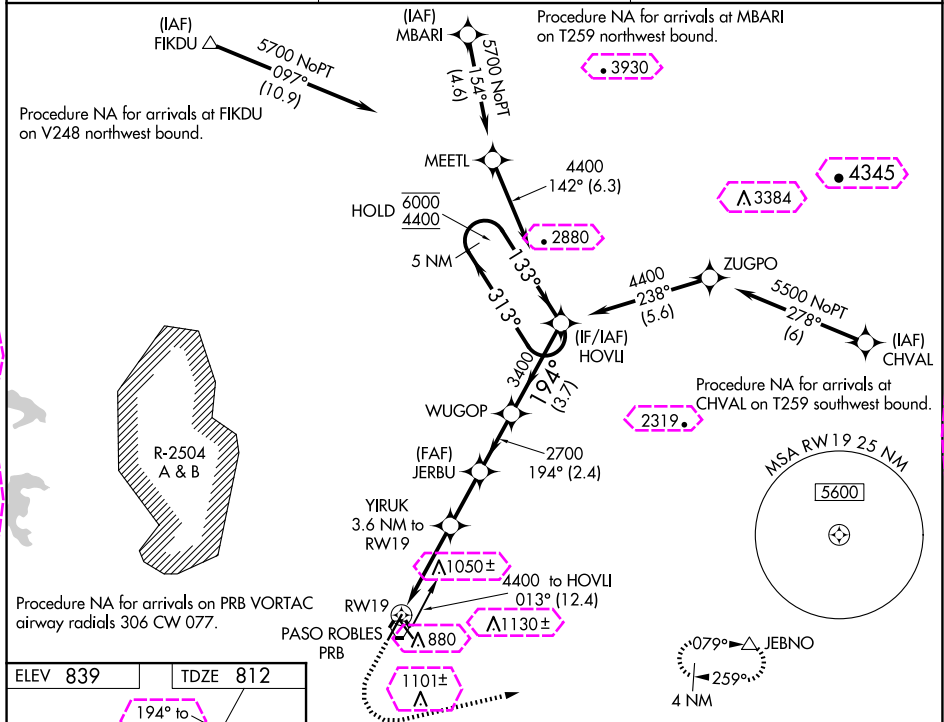
WAAS CH <b>93843</b> <b>W19A</b>	APP CRS <b>194°</b>	Rwy Idg <b>6008</b> TDZE <b>812</b> Apt Elev <b>839</b>
--	------------------------	---

# RNAV (GPS) RWY 19

PASO ROBLES MUNI (PRB)

RNP APCH. ▼ For uncompensated Baro-VNAV systems, LNAV/VNAV NA below -5°C or above 54°C. ▲	MISSED APPROACH: Climb to 1300 then climbing left turn to 4500 direct JEBNO and hold, continue climb-in-hold to 4500.
---	---

ASOS <b>120.125</b>	OAKLAND CENTER <b>128.7 307.0</b>	UNICOM <b>123.0 (CTAF) 0</b>
------------------------	--------------------------------------	---------------------------------



ELEV 839 TDZE 812		1300 4500 JEBNO		YIRUK 3.6 NM to RW19		JERBU 2700		WUGOP 3400		HOVLI 5 NM Holding Pattern	
*LNAV only		*1.4 NM to RW19		2000*		2700		194° 313°		6000 4400	
1.4 NM		2.2 NM		2.2 NM		2.4 NM		3.7 NM		GP 3.00° TCH 37	
CATEGORY		A		B		C		D			
LPV DA		1062-¾		250 (300-¾)							
LNAV/VNAV DA		1109-⅞		297 (300-⅞)							
LNAV MDA		1300-1 488 (500-1)		1300-1⅓ 488 (500-1⅓)							
CIRCLING		1300-1 461 (500-1)		1380-1 541 (600-1)		1440-1¾ 601 (700-1¾)		1700-2¾ 861 (900-2¾)			

PASO ROBLES, CALIFORNIA  
Amdt 2 10SEP20

35°40'N-120°38'W

# PASO ROBLES MUNI (PRB)

## RNAV (GPS) RWY 19

PASO ROBLES, CALIFORNIA

AL-858 (FAA)

25219

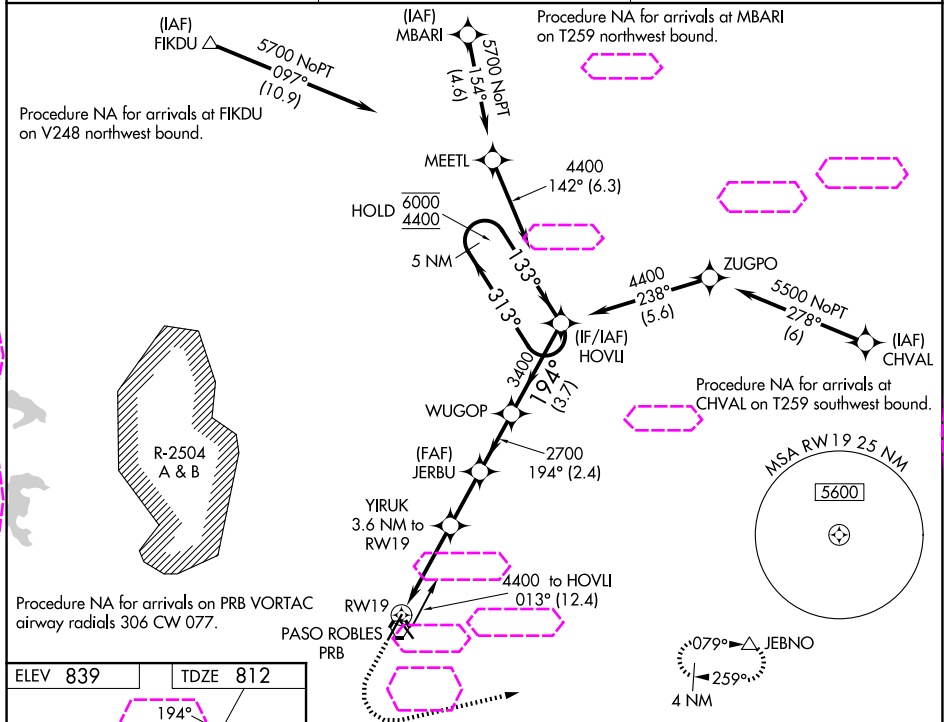
WAAS CH <b>93843</b> <b>W19A</b>	APP CRS <b>194°</b>	Rwy Ldg TDZE <b>812</b> Apt Elev <b>839</b>
--	------------------------	---

# RNAV (GPS) RWY 19

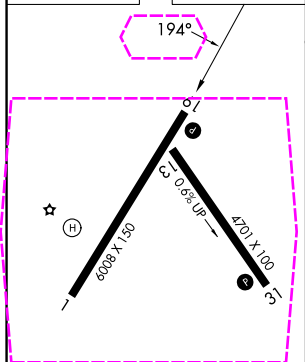
PASO ROBLES MUNI (P.R.B)

RNP APCH. ▼ For uncompensated Baro-VNAV systems, LNAV/VNAV NA below -5°C or above 54°C. ▲	MISSED APPROACH: Climb to 1300 then climbing left turn to 4500 direct JEBNO and hold, continue climb-in-hold to 4500.
---	---

ASOS <b>120.125</b>	OAKLAND CENTER <b>128.7 307.0</b>	UNICOM <b>123.0 (CTAF) 0</b>
------------------------	--------------------------------------	---------------------------------



ELEV 839	TDZE 812
----------	----------



REIL Rwy 19  
MIRL Rwy 13-31 0  
HIRL Rwy 1-19 0

1300	4500	JEBNO $\Delta$	YIRUK 3.6 NM to RW19	JERBU 2700	WUGOP 3400	HOVLI 5 NM Holding Pattern	6000 4400
*LNAV only	*1.4 NM to RW19						
RW19	1.4 NM	2.2 NM	2.2 NM	2.4 NM	3.7 NM		
2000*				2700			
194°							
313°							
133°							
GP 3.00°							
TCH 37							
CATEGORY	A	B	C	D			
LPV DA	1062-3/4	250 (300-3/4)					
LNAV/VNAV DA	1109-7/8	297 (300-7/8)					
LNAV MDA	1300-1	488 (500-1)	1300-1 3/8	488 (500-1 3/8)			
CIRCLING	1300-1 461 (500-1)	1380-1 541 (600-1)	1440-1 3/4 601 (700-1 3/4)	1700-2 3/4 861 (900-2 3/4)			

PASO ROBLES, CALIFORNIA  
Amdt 2 10SEP20

35°40'N-120°38'W

# PASO ROBLES MUNI (P.R.B)

# RNAV (GPS) RWY 19

SW-3, 07 AUG 2025 to 04 SEP 2025

SW-3, 07 AUG 2025 to 04 SEP 2025