

WAAS CH <b>93626</b> <b>W09A</b>	APP CRS <b>093°</b>	Rwy Idg TDZE Apt Elev	<b>3997</b> <b>1644</b> <b>1663</b>
--	------------------------	-----------------------------	---

RNAV (GPS) RWY 9  
ADIRONDACK RGNL (SLK)

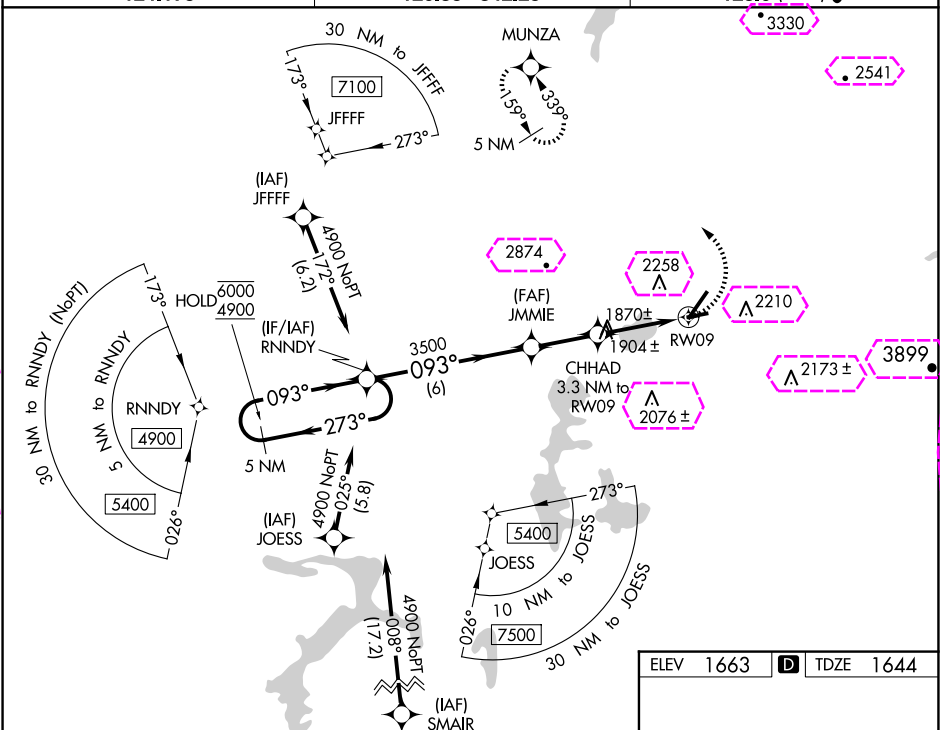
RNP APCH-GPS.

Rwy 9 helicopter visibility reduction below 1 SM NA.  
Straight-in Rwy 9 NA at night, Circling Rwy 5, 9, 27 NA at night.

**MISSED APPROACH:** Climbing left turn to 6000 direct MUNZA and hold, continue climb-in-hold to 6000.

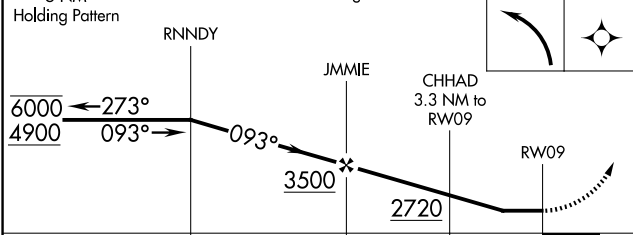
ASOS  
124,175


BOSTON CENTER  
120.35 342.25

UNICOM  
123.0 (CTAF) **L**5 NM  
Holding Pattern

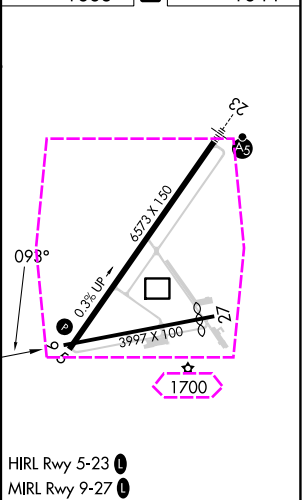
### Visual Segment - Obstacles.

MUNZA



CATEGORY	A		B		C		D	
	6 NM		2.4 NM		3.3 NM			
LP MDA	2180-1	536 (600-1)			2180-1½	536 (600-1½)		
LNAV MDA	2380-1	736 (800-1)			2380-2	736 (800-2)		
 CIRCLING	2500-1¼ 837 (900-1¼)	2660-1½ 997 (1000-1½)			2660-3 997 (1000-3)	2680-3 1017 (1100-3)		

ELEV	1663	<b>D</b>	TDZE	1644
------	------	----------	------	------



SARANAC LAKE, NEW YORK  
Amdt 1A 06OCT22

44°23'N-74°12'W

ADIRONDACK RGNL (SLK)  
RNAV (GPS) RWY 9

NE-2, 10 JUL 2025 to 07 AUG 2025

NE-2, 10 JUL 2025 to 07 AUG 2025

SARANAC LAKE, NEW YORK

AL-806 (FAA)

25219

WAAS CH <b>93626</b> <b>W09A</b>	APP CRS <b>093°</b>	Rwy Ldg TDZE <b>1644</b> Apt Elev <b>1663</b>
--	------------------------	---

# RNAV (GPS) RWY 9

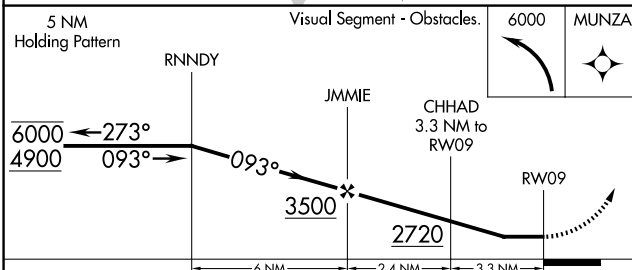
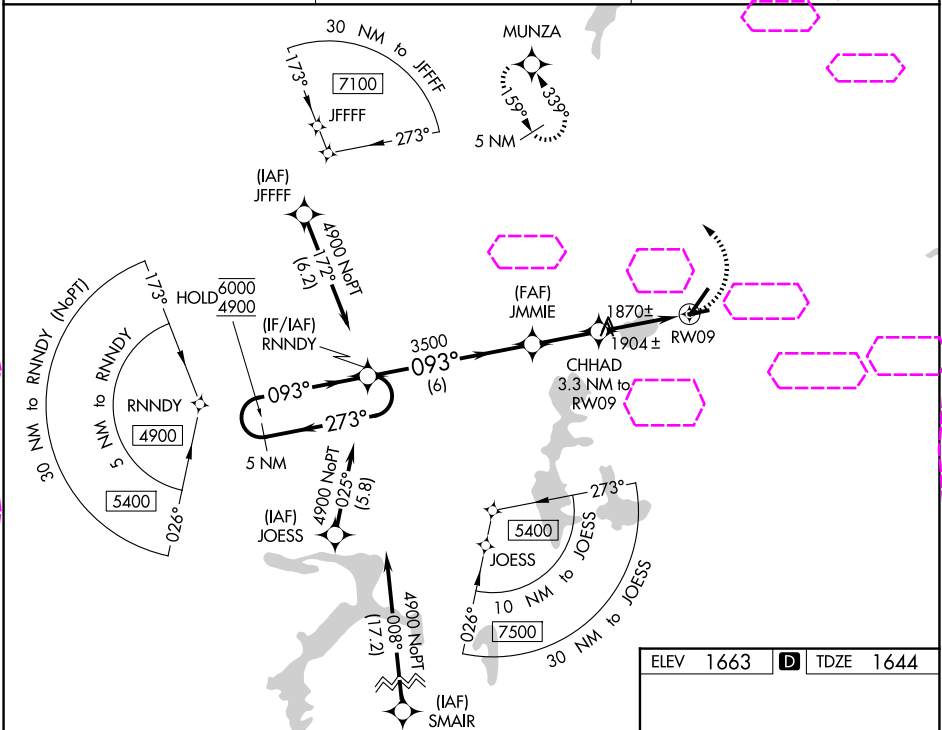
ADIRONDACK RGNL (SLK)

RNP APCH-GPS.

Rwy 9 helicopter visibility reduction below 1 SM NA.  
 Straight-in Rwy 9 NA at night, Circling Rwy 5, 9, 27 NA at night.

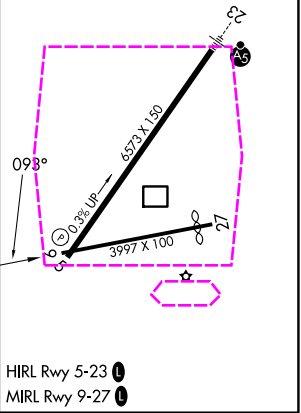
MISSED APPROACH: Climbing left turn to 6000 direct MUNZA and hold, continue climb-in-hold to 6000.

ASOS <b>124.175</b>	BOSTON CENTER <b>120.35 342.25</b>	UNICOM <b>123.0 (CTAF) 0</b>
------------------------	---------------------------------------	---------------------------------



ELEV 1663	TDZE 1644
-----------	-----------

CATEGORY	A	B	C	D
LP MDA	2180-1	536 (600-1)	2180-1½	536 (600-1½)
INAV MDA	2380-1	736 (800-1)	2380-2	736 (800-2)
<b>CIRCLING</b>	2500-1¼ 837 (900-1¼)	2660-1½ 997 (1000-1½)	2660-3 997 (1000-3)	2680-3 1017 (1100-3)



SARANAC LAKE, NEW YORK  
Amdt 1A 06OCT22

44°23'N-74°12'W

ADIRONDACK RGNL (SLK)  
**RNAV (GPS) RWY 9**

NE-2, 07 AUG 2025 to 04 SEP 2025

NE-2, 07 AUG 2025 to 04 SEP 2025