

SARANAC LAKE, NEW YORK

AL-806 (FAA)

25107

WAAS CH 48926 W05A	APP CRS 049°	Rwy Idg 6573 TDZE 1654 Apt Elev 1663
--	------------------------	---

RNAV (GPS) RWY 5

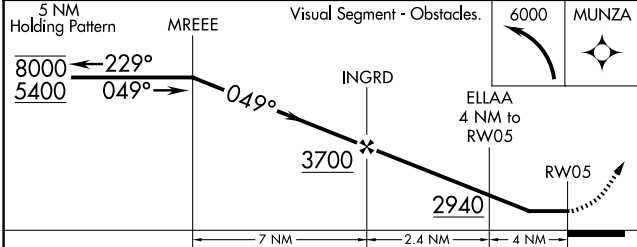
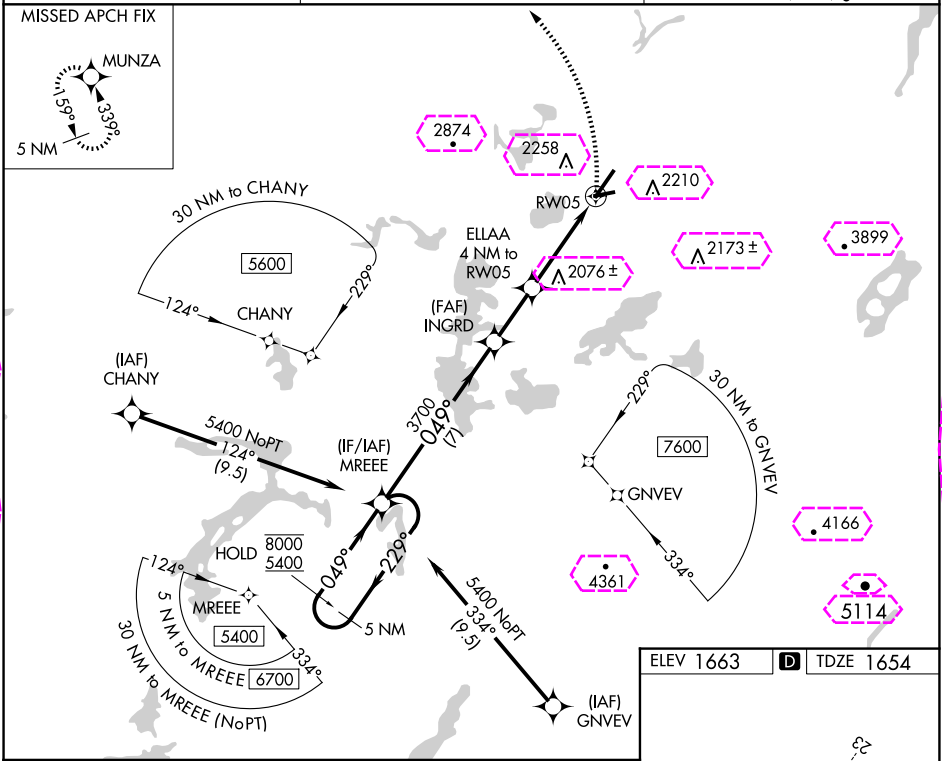
ADIRONDACK RGNL (SLK)

RNP APCH-GPS.

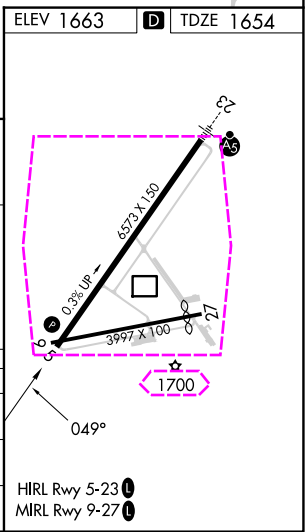
⚠ Circling Rwy 5, 9, 27 NA at night. Rwy 5 helicopter visibility reduction below 1 SM NA. Rwy 5 straight-in minimums NA at night.

MISSED APPROACH: Climbing left turn to 6000 direct MUNZA and hold, continue climb-in-hold to 6000.

ASOS 124.175	BOSTON CENTER 120.35 342.25	UNICOM 123.0 (CTAF) 0
------------------------	---------------------------------------	---------------------------------



CATEGORY	A	B	C	D
LP MDA	2420-1 766 (800-1)	2420-1¼ 766 (800-1¼)	2420-2½ 766 (800-2½)	
LNAV MDA	2540-1¼ 886 (900-1¼)	886 (900-1¼)	2540-2½ 886 (900-2½)	
CIRCLING	2540-1¼ 877 (900-1¼)	2660-1½ 997 (1000-1½)	2660-3 997 (1000-3)	2680-3 1017 (1100-3)



SARANAC LAKE, NEW YORK
Amdt 1D 06OCT22

44°23'N-74°12'W

ADIRONDACK RGNL (SLK)
RNAV (GPS) RWY 5

SARANAC LAKE, NEW YORK

AL-806 (FAA)

25219

WAAS CH 48926 W05A	APP CRS 049°	Rwy Ldg TDZE 1654 Apt Elev 1663
--	------------------------	---

RNAV (GPS) RWY 5

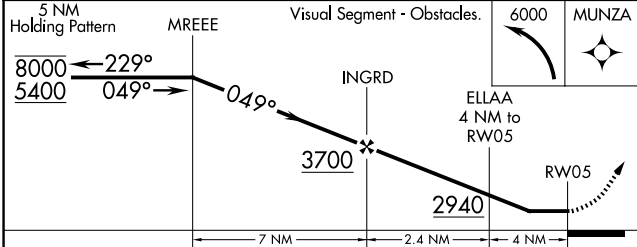
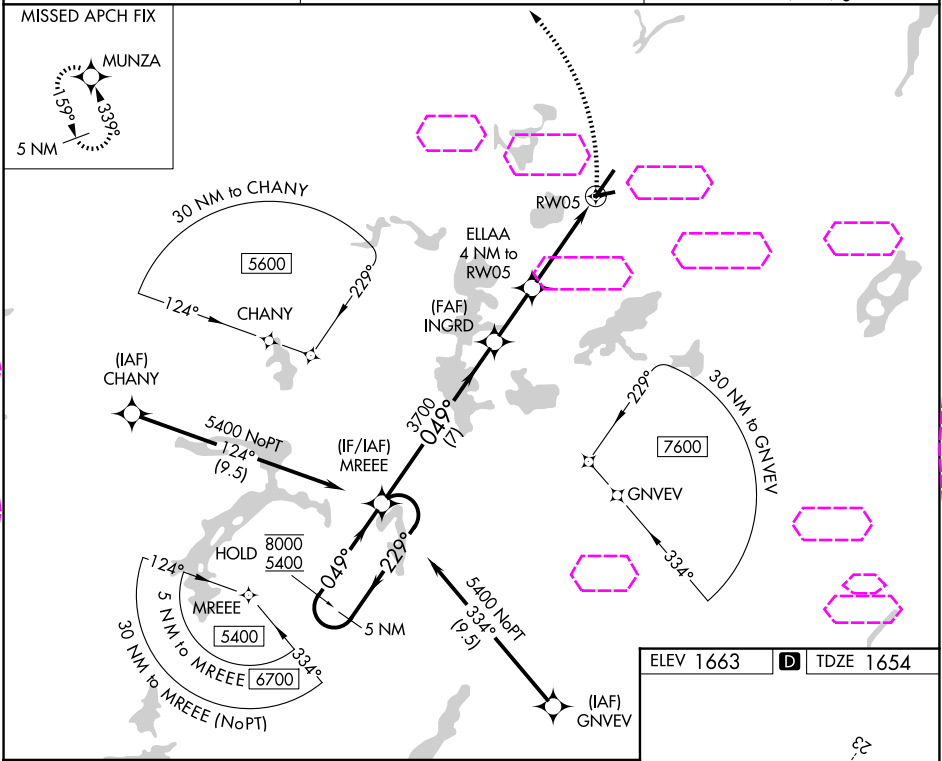
ADIRONDACK RGNL (SLK)

RNP APCH-GPS.

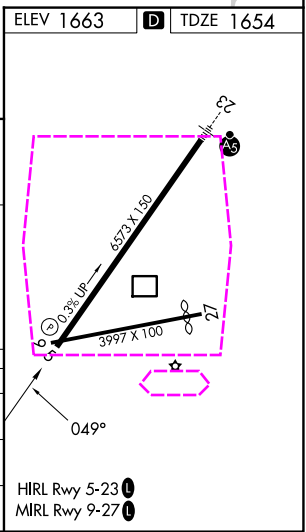
⚠ Circling Rwy 5, 9, 27 NA at night. Rwy 5 helicopter visibility reduction below 1 SM NA. Rwy 5 straight-in minimums NA at night.

⚠ MISSED APPROACH: Climbing left turn to 6000 direct MUNZA and hold, continue climb-in-hold to 6000.

ASOS 124.175	BOSTON CENTER 120.35 342.25	UNICOM 123.0 (CTAF) 0
------------------------	---------------------------------------	---------------------------------



CATEGORY	A	B	C	D
LP MDA	2420-1 766 (800-1)	2420-1¼ 766 (800-1¼)	2420-2½ 766 (800-2½)	
LNAV MDA	2540-1¼ 886 (900-1¼)	2540-2½ 886 (900-2½)		
CIRCLING	2540-1¼ 877 (900-1¼)	2660-1½ 997 (1000-1½)	2660-3 997 (1000-3)	2680-3 1017 (1100-3)



SARANAC LAKE, NEW YORK
Amdt 1D 06OCT22

44°23'N-74°12'W

ADIRONDACK RGNL (SLK)
RNAV (GPS) RWY 5

NE-2, 07 AUG 2025 to 04 SEP 2025

NE-2, 07 AUG 2025 to 04 SEP 2025