

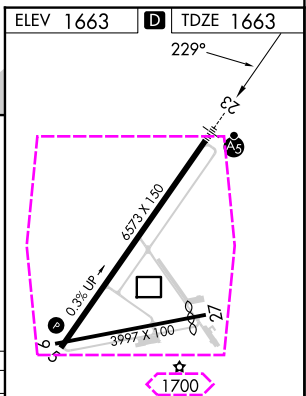
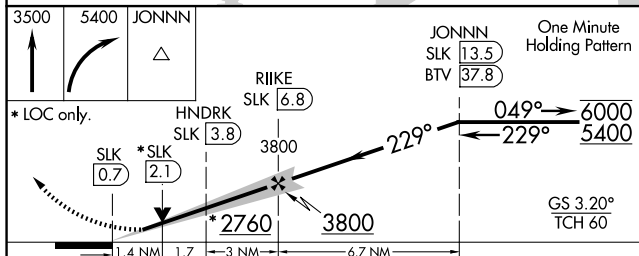
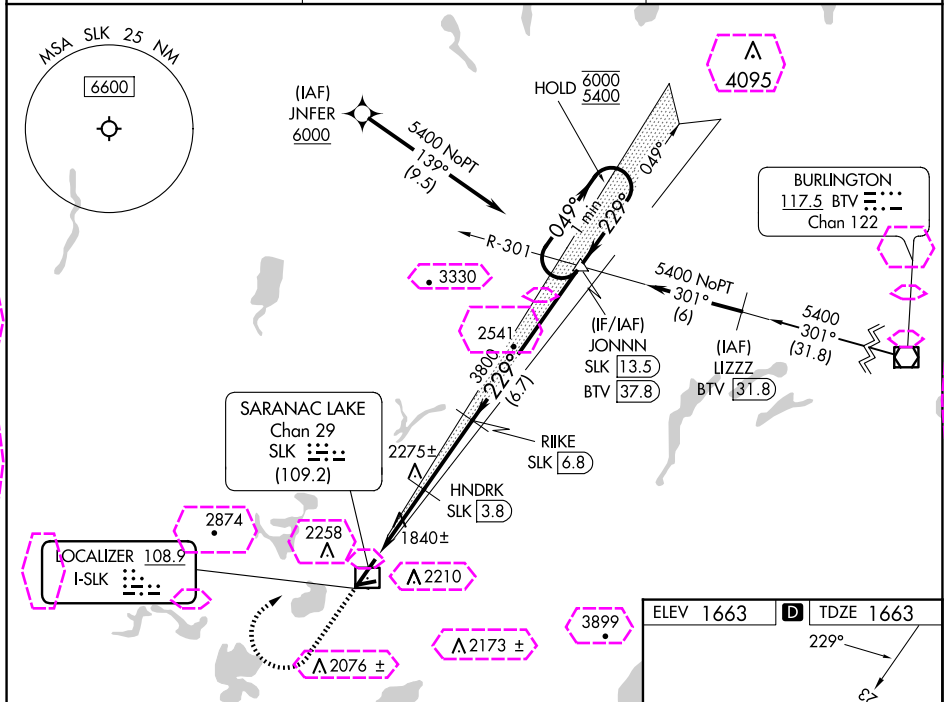



LOC I-SLK 108.9	APP CRS 229°	Rwy Idg TDZE Apt Elev	6333 1663 1663
---------------------------	------------------------	-----------------------------	---

ILS or LOC RWY 23
ADIRONDACK RGNL (SLK)

<p>DME required. RNAV 1-GPS required.</p> <p> NAV 5, 9, 27 NA at night. DME from SLK DME. Simultaneous reception of I-SLK and SLK DME required. LOC only Rwy 23 helicopter visibility reduction below 3/4 SM NA. For inop ALS, increase S-LOC 23 Cat A/B visibility to 1 SM.</p>	<p>MALS R</p> <p></p>	<p>MISSED APPROACH: Climb to 3500 then climbing right turn to 5400 direct JONNN and hold.</p>
--	--	---

ASOS 124.175	BOSTON CENTER 120.35 342.25	UNICOM 123.0 (CTAF) 0
------------------------	---------------------------------------	---------------------------------



CATEGORY	A	B	C	D
S-ILS 23	1863- $\frac{1}{2}$		200 (200- $\frac{1}{2}$)	
S-LOC 23	2200- $\frac{3}{4}$	537 (600- $\frac{3}{4}$)	2200-1	537 (600-1)
 CIRCLING	2500- $\frac{1}{4}$ 837 (900- $\frac{1}{4}$)	2660- $\frac{1}{2}$ 997 (1000- $\frac{1}{2}$)	2660-3 997 (1000-3)	2700-3 1037 (1100-3)

SARANAC LAKE, NEW YORK
Amdt 11 17JUN21

44°23'N-74°12'W

ADIRONDACK RGNL (SLK)
ILS or LOC RWY 23

NE-2, 10 JUL 2025 to 07 AUG 2025

NE-2, 10 JUL 2025 to 07 AUG 2025

SARANAC LAKE, NEW YORK

AL-806 (FAA)


25219

LOC I-SLK 108.9	APP CRS 229°	Rwy Ldg TDZE Apt Elev	6333 1663 1663
---------------------------	------------------------	-----------------------------	---

ILS or LOC RWY 23


ADIRONDACK RGNL (SLK)

DME required.
RNAV 1-GPS required.


-32°C

Circling Rwy 5, 9, 27 NA at night. DME from SLK DME. Simultaneous reception of I-SLK and SLK DME required. LOC only Rwy 23 helicopter visibility reduction below 3/4 SM NA. For inop ALS, increase S-LOC 23 Cat A/B visibility to 1 SM.

MALSR



MISSED APPROACH: Climb to 3500 then climbing right turn to 5400 direct JONNN and hold.

ASOS 124.175	BOSTON CENTER 120.35 342.25	UNICOM 123.0 (CTAF) 0
------------------------	---------------------------------------	---------------------------------

