

WATSONVILLE, CALIFORNIA

AL-805 (FAA)

25219

WAAS CH 50144 W02A	APP CRS 018°	Rwy Ldg 4502 TDZE 152 Apt Elev 163
----------------------------------------	------------------------	---------------------------------------------------------------

RNAV (GPS) RWY 2

WATSONVILLE MUNI (WVI)

RNP APCH - GPS.

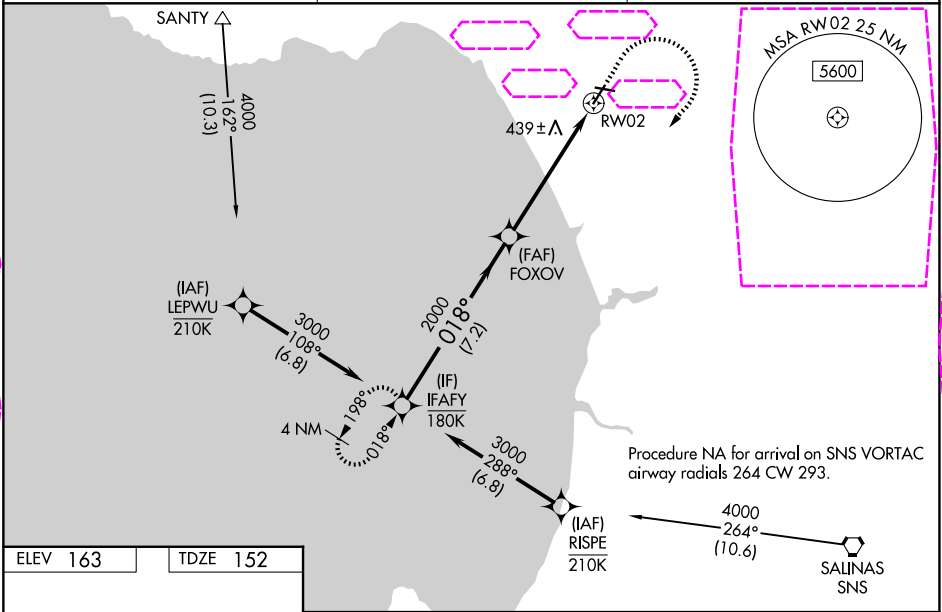
▼

⚠

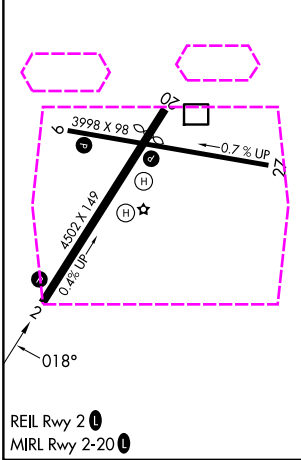
Rwy 2 helicopter visibility reduction below $\frac{3}{4}$ SM NA. Circling Rwy 9, 27 NA at night. For uncompensated Baro-VNAV systems, LNAV/VNAV NA below 0°C or above 54°C. Circling NA west of Rwy 2-20. When local altimeter setting not received, use Monterey altimeter setting and increase LPV DA to 510 feet and all visibilities $\frac{1}{2}$ SM. Increase LNAV/VNAV DA to 834 feet and all visibilities $\frac{1}{4}$ SM. Increase all MDAs 80 feet and LNAV visibility Cat C/D $\frac{1}{2}$ SM, and Circling visibility Cat C $\frac{1}{2}$ SM. Baro-VNAV and VDP NA when using Monterey altimeter setting.

MISSED APPROACH: (Do not exceed 200K until IFAFY) Climb to 740 then climbing right turn to 3000 direct IFAFY and hold, continue climb-in-hold to 3000.

ASOS 132.275	NORCAL APP CON 127.15 307.125	UNICOM 122.8 (CTAF) 0
------------------------	-----------------------------------------	---------------------------------



ELEV 163	TDZE 152
----------	----------



VGSI and RNAV glidepath not coincident (VGSI Angle 3.00/TCH 43).			
IFAFY	FOXOV	740	3000
3000	2000	1.6 NM to RW02	IFAFY
GP 3.00°	2000		
TCH 56			
	7.2 NM	4.1 NM	1.6 NM
CATEGORY	A	B	C
LPV DA	448- $\frac{7}{8}$ 296 (300- $\frac{7}{8}$)		
LNAV/VNAV DA	772-1 $\frac{3}{4}$ 620 (700-1 $\frac{3}{4}$)		
LNAV MDA	700-1 548 (600-1)	700-1 $\frac{5}{8}$ 548 (600-1 $\frac{5}{8}$)	
CIRCLING	700-1 537 (600-1)	700-1 $\frac{5}{8}$ 537 (600-1 $\frac{5}{8}$)	1160-3 997 (1000-3)

WATSONVILLE, CALIFORNIA
Amdt 3 11JUL24

36°56'N-121°47'W

WATSONVILLE MUNI (WVI)

RNAV (GPS) RWY 2