

WATSONVILLE, CALIFORNIA

AL-805 (FAA)

24193

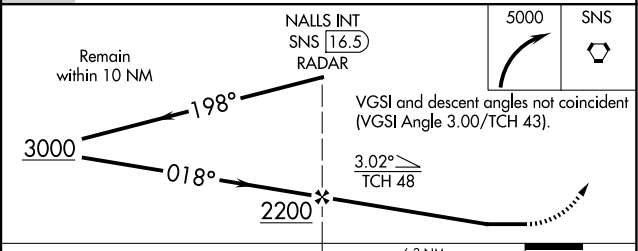
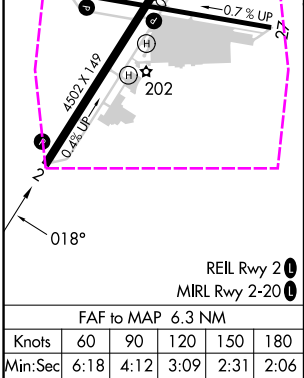
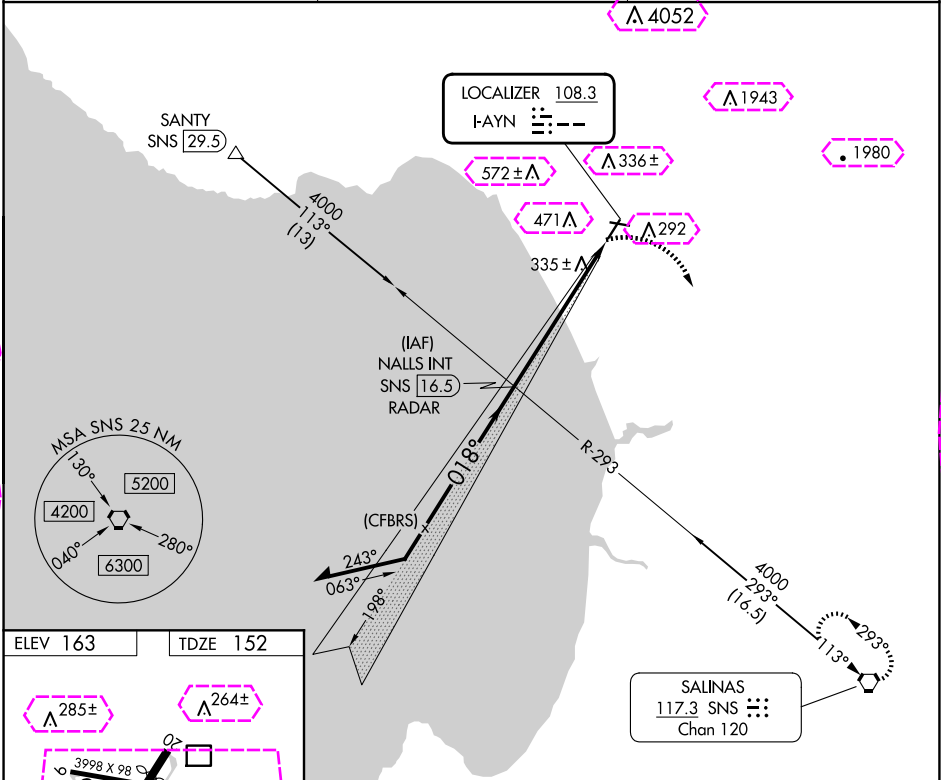
LOC I-AYN <b>108.3</b>	APP CRS <b>018°</b>	Rwy Idg TDZE <b>152</b> Apt Elev <b>163</b>
---------------------------	------------------------	---

**LOC RWY 2**  
WATSONVILLE MUNI (WVI)

**NA** Rwy 2 helicopter visibility reduction below  $\frac{3}{4}$  SM NA. Circling NA west of Rwy 2-20. Circling Rwy 9, 27 NA at night. When local altimeter setting not received, use Monterey altimeter setting and increase all MDAs 80 feet.

MISSED APPROACH: Climbing right turn to 5000 direct SNS VORTAC and hold, continue climb-in-hold to 5000.

ASOS <b>132.275</b>	NORCAL APP CON <b>127.15 307.125</b>	UNICOM <b>122.8 (CTAF) 0</b>
------------------------	---	---------------------------------



CATEGORY	A	B	C	D
S-2	1140-1¼ 988 (1000-1¼)	1140-1½ 988 (1000-1½)	1140-3 988 (1000-3)	
CIRCLING	1140-1¼ 977 (1000-1¼)	1140-1½ 977 (1000-1½)	1140-3 977 (1000-3)	1160-3 997 (1000-3)

WATSONVILLE, CALIFORNIA  
Amdt 4E 21MAR24

36°56'N-121°47'W

WATSONVILLE MUNI (WVI)  
**LOC RWY 2**

SW-2, 10 JUL 2025 to 07 AUG 2025

SW-2, 10 JUL 2025 to 07 AUG 2025

SW-2, 07 AUG 2025 to 04 SEP 2025