

BALTIMORE, MARYLAND

AL-804 (FAA)

25163

WAAS CH 82207 W33A	APP CRS 335°	Rwy Ldg TDZE 143 Apt Elev 143	8301 143 143
--	------------------------	---	---

RNAV (GPS) Y RWY 33L

BALTIMORE/WASHINGTON INTL THURGOOD MARSHALL (BWI)

RNP APCH-GPS.

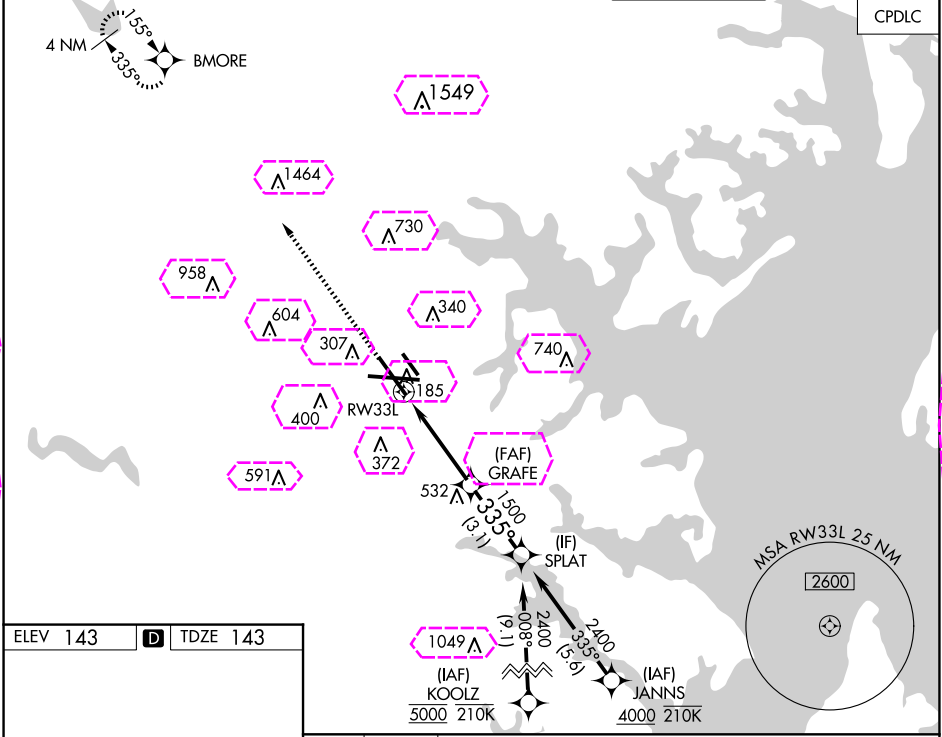
For uncompensated Baro-VNAV systems, LNAV/VNAV NA below -11°C or above 54°C.



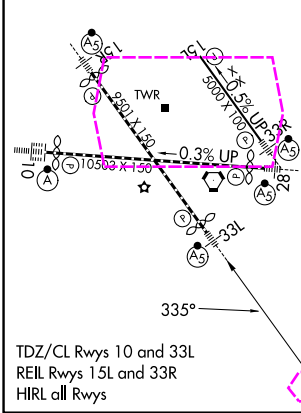
MISSED APPROACH: Climb to 3000 direct BMORE and hold.

D-ATIS 115.1 127.8	POTOMAC APP CON 119.0 282.275 (020°-100°) 119.7 290.475 (131°-180°) 124.55 317.425 (101°-130°) 128.7 307.9 (181°-019°)	BALTIMORE TOWER 119.4 257.8	GND CON 121.9	CLNC DEL 118.05
------------------------------	--	---------------------------------------	-------------------------	---------------------------

CPDLC



ELEV 143	D	TDZE 143
-----------------	----------	-----------------



3000	BMORE	VGSI and RNAV glidepath not coincident (VGSI Angle 3.00/TCH 72).		SPLAT
1.2 NM to RW33L		GRAFE		2400
1.2 NM		2.9 NM	3.1 NM	
CATEGORY	A	B	C	D
LPV	DA	343/18 200 (200-1/2)		
LNAV/VNAV	DA	432/24 289 (300-1/2)		
LNAV MDA	600/24	457 (500-1/2)	600/45	457 (500-2/3)
CIRCLING	640-1 497 (500-1)	660-1 517 (600-1)	700-1 1/2 557 (600-1 1/2)	880-2 1/4 737 (800-2 1/4)

BALTIMORE, MARYLAND
Amdt 5 05SEP24

BALTIMORE/WASHINGTON INTL THURGOOD MARSHALL (BWI)
39°11'N-76°40'W

RNAV (GPS) Y RWY 33L

NE-3, 10 JUL 2025 to 07 AUG 2025

NE-3, 10 JUL 2025 to 07 AUG 2025

WAAS CH 82207 W33A	APP CRS 335°	Rwy Ldg 8301 TDZE 143 Apt Elev 143
--	------------------------	---

RNAV (GPS) Y RWY 33L
BALTIMORE/WASHINGTON INTL THURGOOD MARSHALL (BWI)

RNP APCH-GPS.

T For uncompensated Baro-VNAV systems, LNAV/VNAV NA below -11°C
A or above 54°C.

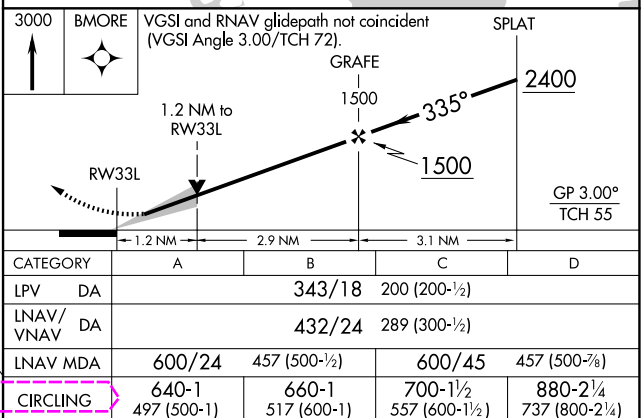
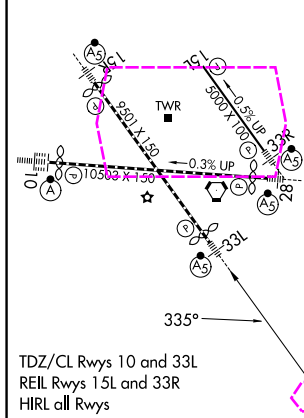
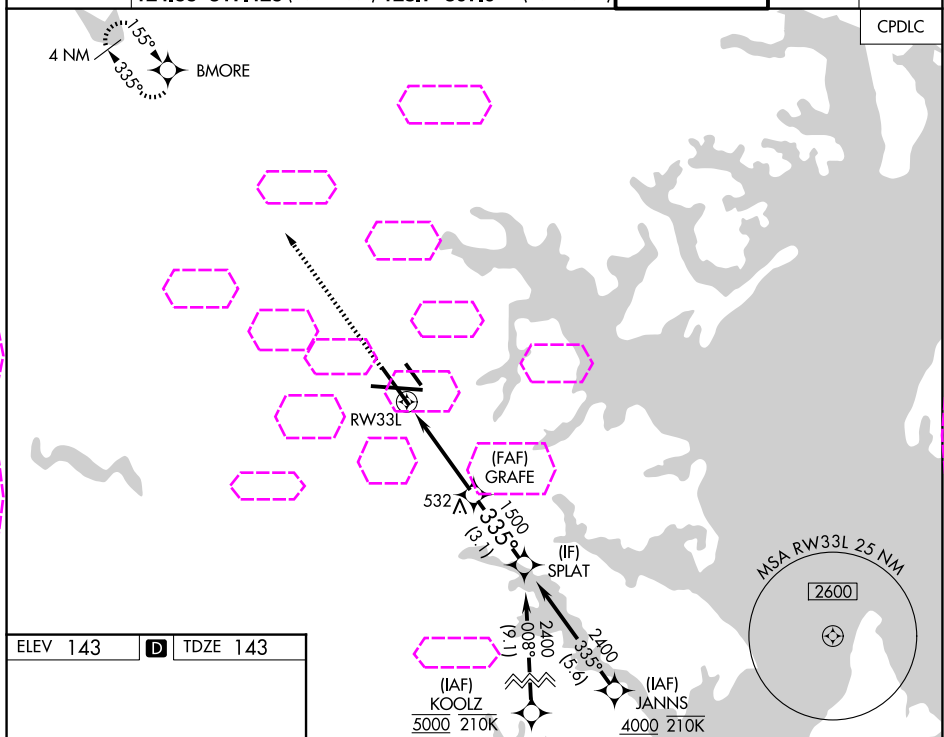
MAISR



MISSED APPROACH: Climb to 3000 direct BMORE and hold.

D-ATIS		POTOMAC APP CON	BALTIMORE TOWER	GND CON	CLNC DEL
119.0 127.8	282.275	(020°-100°) 119.7 290.475 (131°-180°)	119.4 257.8	121.9	118.05
	124.55 317.425	(101°-130°) 128.7 307.9 (181°-019°)			

CPDLC



BALTIMORE, MARYLAND
Amdt 5 05SEP24

BALTIMORE/WASHINGTON INTL THURGOOD MARSHALL (BWI)
39°11'N-76°40'W **RNAV (GPS) Y RWY 33L**