

WAAS CH 48808 W28A	APP CRS 285°	Rwy Ldg 9803 TDZE 143 Apt Elev 143
--	------------------------	---

RNAV (GPS) Y RWY 28

BALTIMORE/WASHINGTON INTL THURGOOD MARSHALL (BWI)

RNP APCH - GPS.

T For uncompensated Baro-VNAV systems, LNAV/VNAV NA below -11°C or above 54°C. For inop ALS, increase LNAV/VNAV all Cats visibility to RVR 4000 and LNAV/VNAV Cat C and D visibility to RVR 5500.
A * RVR 1800 authorized with use of FD or AP or HUD to DA.

MALS R

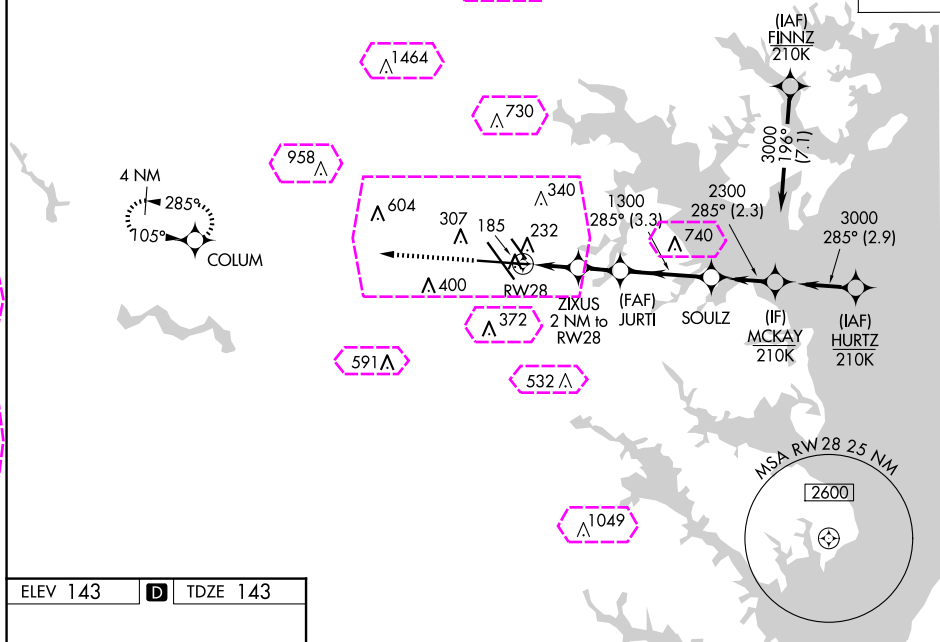


MISSED APPROACH:
Climb to 2500 direct
COLUMN and hold.

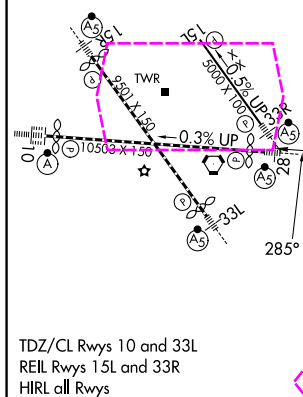
D-ATIS	POTOMAC APP CON						BALTIMORE TOWER	GND CON	CLNC DEL
119.1 127.8	119.0	282.275	(020°-100°)	119.7	290.475	(131°-180°)			
	124.55	317.425	(101°-130°)	128.7	307.9	(181°-019°)	119.4 257.8	121.9	118.05

1549 Δ

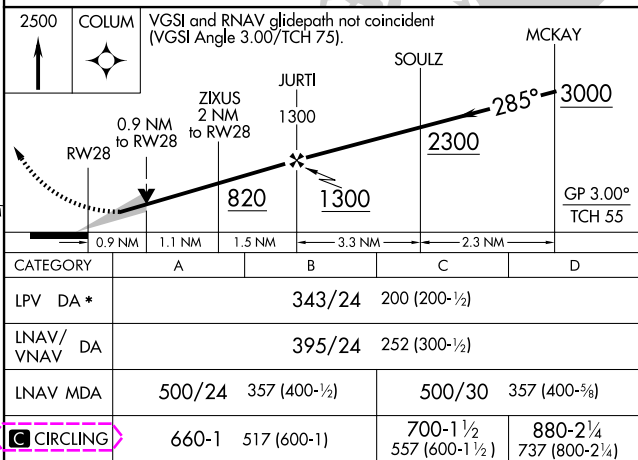
CPDLC



ELEV 143	D	TDZE 143
----------	----------	----------



TDZ/CL Rwy 10 and 33L
REIL Rwy 15L and 33R
HIRL all Rwy



BALTIMORE, MARYLAND
Amdt 3 05SEP24

BALTIMORE/WASHINGTON INTL THURGOOD MARSHALL (BWI)
38°11'N-76°40'W BNA/V (GDS)/V BNA/V CO

RNAV (GPS) Y RWY 28

BALTIMORE, MARYLAND

AL-804 (FAA)

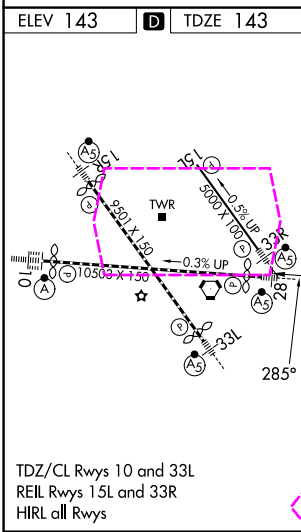
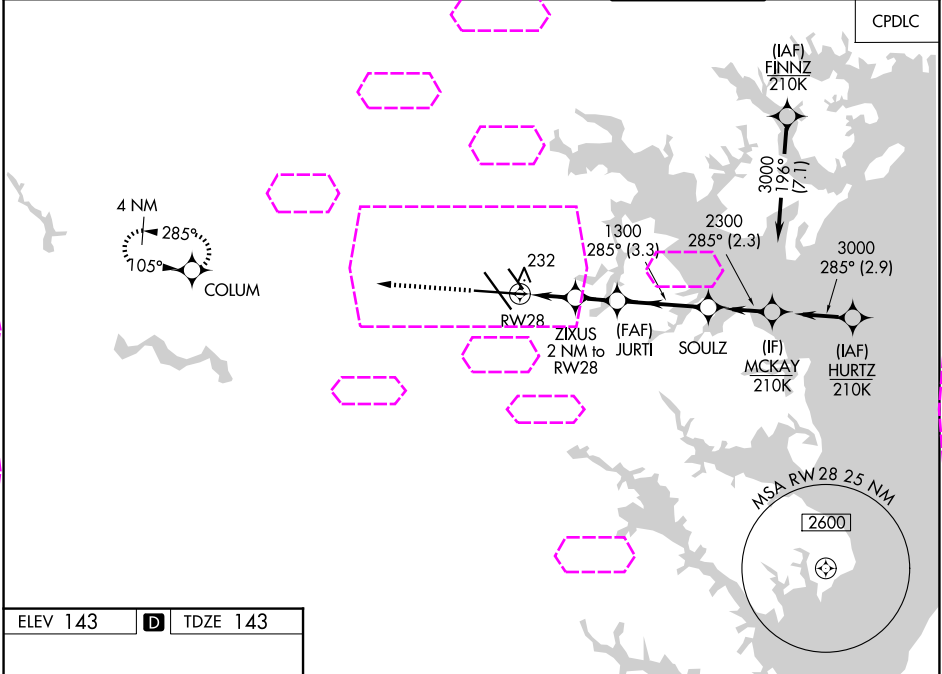
25219


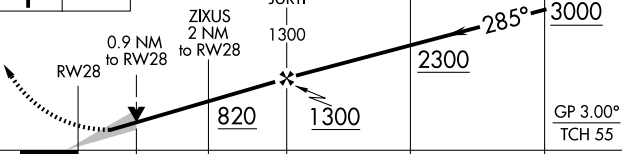
WAAS CH 48808 W28A	APP CRS 285°	Rwy Ldg TDZE Apt Elev	9803 143 143
--	------------------------	-----------------------------	---

RNAV (GPS) Y RWY 28

BALTIMORE/WASHINGTON INTL THURGOOD MARSHALL (BWI)

RNP APCH - GPS.		MALSR	MISSED APPROACH: Climb to 2500 direct COLUM and hold.		
For uncompensated Baro-VNAV systems, LNAV/VNAV NA below -11°C or above 54°C. For inop ALS, increase LNAV/VNAV all Cats visibility to RVR 4000 and LNAV Cats C and D visibility to RVR 5500. * RVR 1800 authorized with use of FD or AP or HUD to DA.					
D-ATIS	POTOMAC APP CON	BALTIMORE TOWER	GND CON	CLNC DEL	
115.1 127.8	119.0 282.275 124.55 317.425 (020°-100°) (101°-130°)	119.4 257.8 119.7 290.475 (131°-180°) (181°-019°)	121.9	118.05	



2500 ↑	COLUM 	VGSI and RNAV glidepath not coincident (VGSI Angle 3.00°/TCH 75).			
					
CATEGORY	A		B	C	D
LPV DA *			343/24	200 (200-½)	
LNAV/ VNAV	DA		395/24	252 (300-½)	
LNAV MDA	500/24	357 (400-½)	500/30		357 (400-¾)
CIRCLING	660-1	517 (600-1)	700-1½ 557 (600-1½)	880-2¼ 737 (800-2¼)	

BALTIMORE, MARYLAND
Amdt 3 05SEP24

BALTIMORE/WASHINGTON INTL THURGOOD MARSHALL (BWI)
39°11'N-76°40'W

RNAV (GPS) Y RWY 28