

BALTIMORE, MARYLAND

AL-804 (FAA)

25163

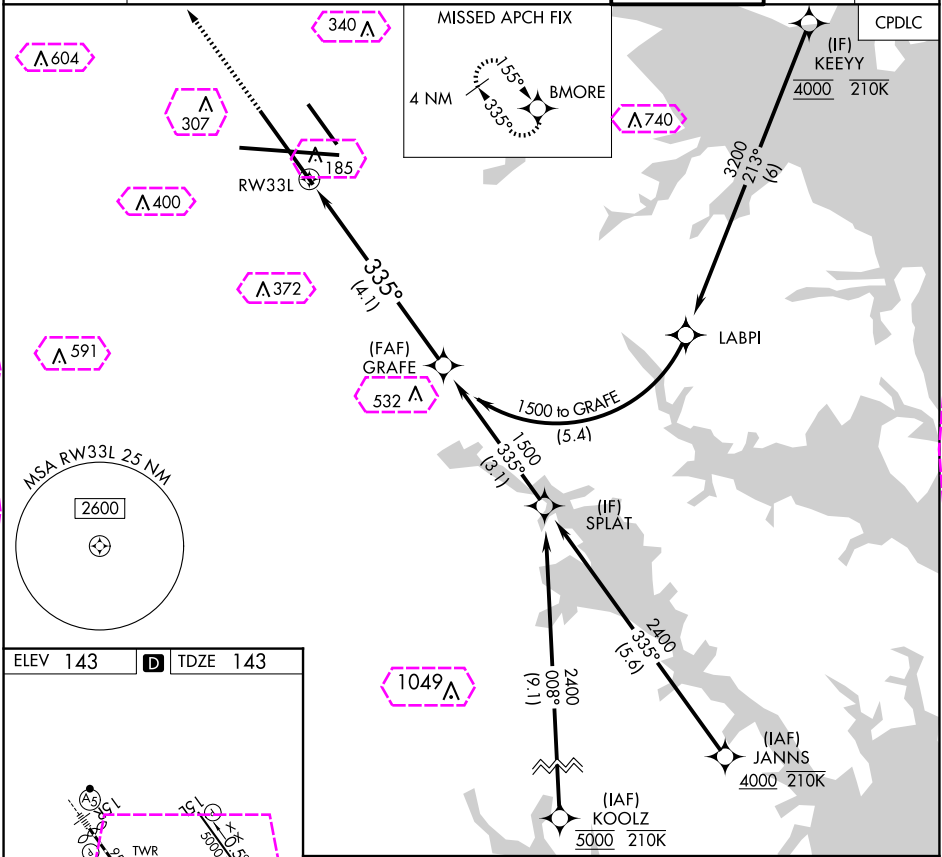
APP CRS	Rwy Ldg	8301
335°	TDZE	143
	Apt Elev	143

RNAV (RNP) Z RWY 33L

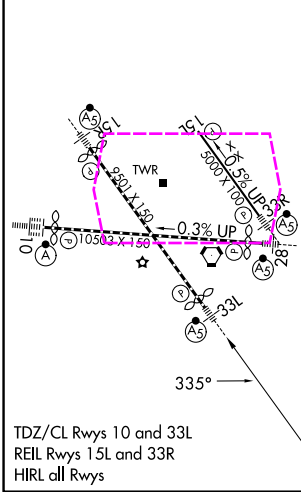
BALTIMORE/WASHINGTON INTL THURGOOD MARSHALL (BWI)

RNP APCH - GPS. From KEEYY: RF.		MALSR	MISSED APPROACH: Climb to 3000 direct BMORE and hold.	
▼ For uncompensated Baro-VNAV systems, procedure NA below -11°C or above 54°C. For inop ALS, increase RNP 0.30 all Cats visibility to RVR 5500.				

D-ATIS	POTOMAC APP CON	BALTIMORE TOWER	GND CON	CLNC DEL
115.1 127.8	119.0 282.275 124.55 317.425	119.7 290.475 (131°-180°) 128.7 307.9 (181°-019°)	121.9	118.05



ELEV 143	D	TDZE 143
----------	---	----------



3000	BMORE	See planview for multiple IF locations. VGSI and RNAV glidepath not coincident (VGSI Angle 3.00/TCH 72).		GRAFE
				1500
		1500 GP 3.00° TCH 55		
CATEGORY	A	B	C	D
RNP 0.30 DA	496/30 353 (400-%)			
AUTHORIZATION REQUIRED				

BALTIMORE, MARYLAND
Amdt 4 05SEP24

BALTIMORE/WASHINGTON INTL THURGOOD MARSHALL (BWI)
39°11'N-76°40'W

RNAV (RNP) Z RWY 33L

NE-3, 10 JUL 2025 to 07 AUG 2025

NE-3, 10 JUL 2025 to 07 AUG 2025

BALTIMORE, MARYLAND

AL-804 (FAA)

25219

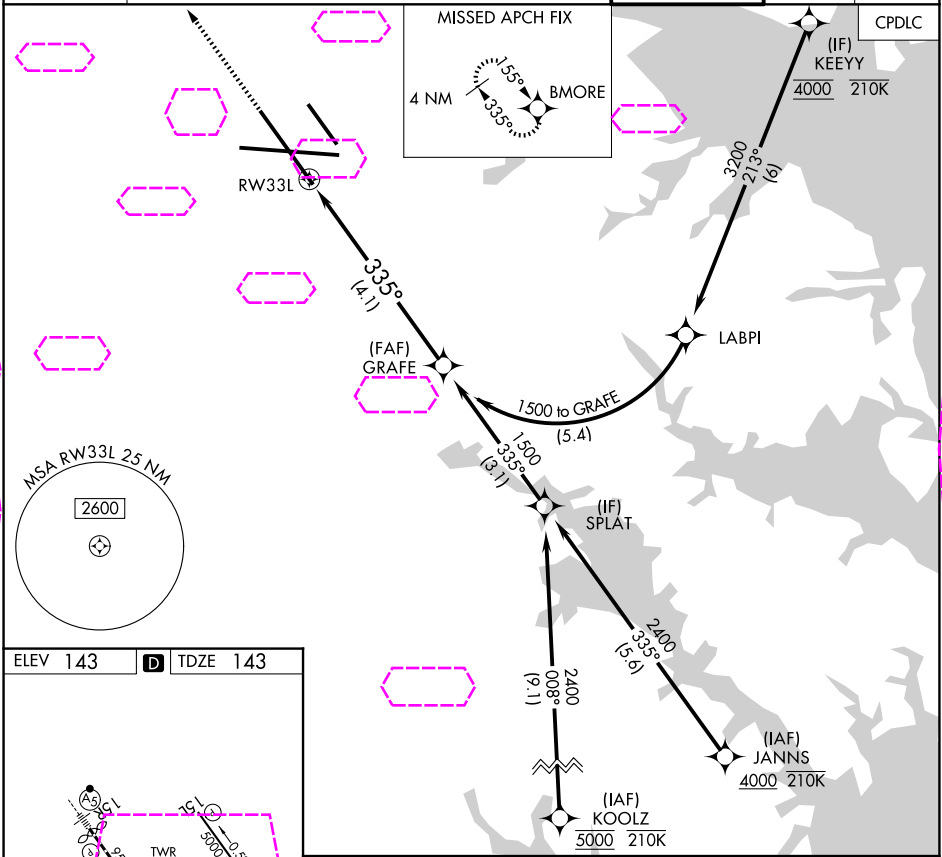
APP CRS	Rwy Ldg	8301
335°	TDZE	143
	Apt Elev	143

RNAV (RNP) Z RWY 33L

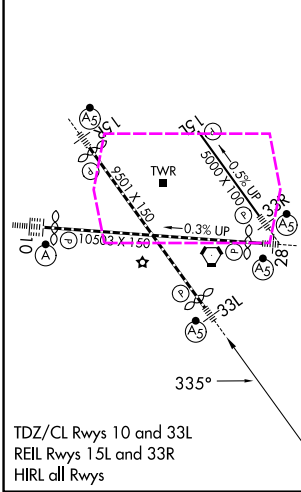
BALTIMORE/WASHINGTON INTL THURGOOD MARSHALL (BWI)



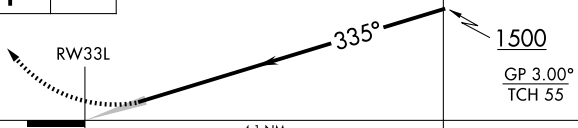
RNP APCH - GPS. From KEEYY: RF.	MALSR	MISSED APPROACH: Climb to 3000 direct BMORE and hold.
For uncompensated Baro-VNAV systems, procedure NA below -11°C or above 54°C. For inop ALS, increase RNP 0.30 all Cats visibility to RVR 5500.		

D-ATIS	POTOMAC APP CON	BALTIMORE TOWER	GND CON	CLNC DEL
115.1 127.8	119.0 282.275 (020°-100°) 119.7 290.475 (131°-180°) 124.55 317.425 (101°-130°) 128.7 307.9 (181°-019°)	119.4 257.8	121.9	118.05



ELEV 143	D	TDZE 143
----------	---	----------



3000	BMORE	See planview for multiple IF locations. VGSI and RNAV glidepath not coincident (VGSI Angle 3.00/TCH 72).			GRAFE
					1500
					
CATEGORY	A	B	C	D	
RNP 0.30 DA	496/30 353 (400-%)				
AUTHORIZATION REQUIRED					

BALTIMORE, MARYLAND
Amdt 4 05SEP24

BALTIMORE/WASHINGTON INTL THURGOOD MARSHALL (BWI)
39°11'N-76°40'W

RNAV (RNP) Z RWY 33L

NE-3, 07 AUG 2025 to 04 SEP 2025

NE-3, 07 AUG 2025 to 04 SEP 2025