

BALTIMORE, MARYLAND

AL-804 (FAA)

25219

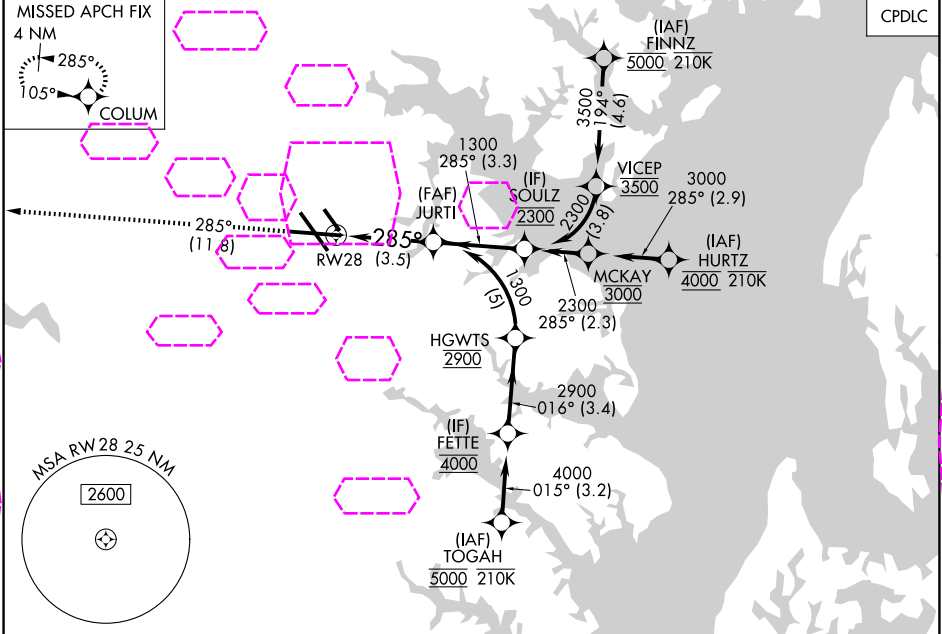
APP CRS	Rwy Ldg	9803
285°	TDZE	143
	Apt Elev	143

RNAV (RNP) Z RWY 28

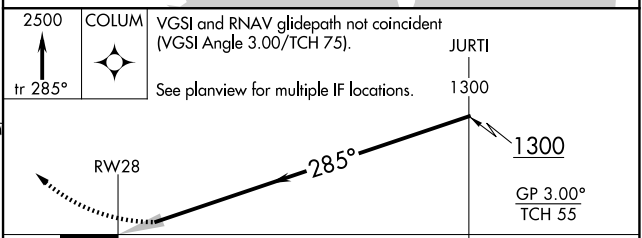
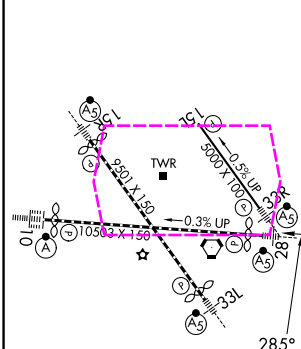
BALTIMORE/WASHINGTON INTL THURGOOD MARSHALL (BWI)

RNP AR APCH - GPS.	MALSR	MISSED APPROACH: Climb to 2500 on track 285° to COLUM and hold.
▼ For uncompensated Baro-VNAV systems, procedure NA below -11°C or above 54°C. For inop ALS, increase RNP 0.30 all Cnts visibility to RVR 5500.		

D-ATIS	POTOMAC APP CON	BALTIMORE TOWER	GND CON	CLNC DEL
115.1 127.8	119.0 282.275 (020°-100°) 119.7 290.475 (131°-180°) 124.55 317.425 (101°-130°) 128.7 307.9 (181°-019°)	119.4 257.8	121.9	118.05



ELEV 143	D	TDZE 143
----------	---	----------



CATEGORY	A	B	C	D
RNP 0.30 DA	521/35	378 (400-%)		

AUTHORIZATION REQUIRED

BALTIMORE, MARYLAND
Amdt 2 05SEP24

BALTIMORE/WASHINGTON INTL THURGOOD MARSHALL (BWI)
39°11'N-76°40'W

RNAV (RNP) Z RWY 28