

BALTIMORE, MARYLAND

AL-804 (FAA)

25163

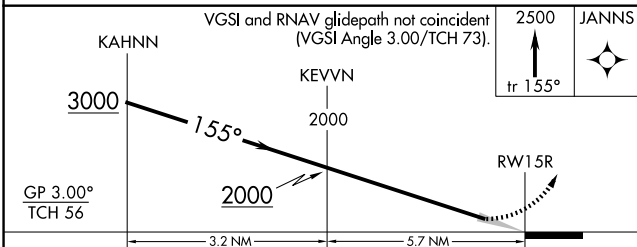
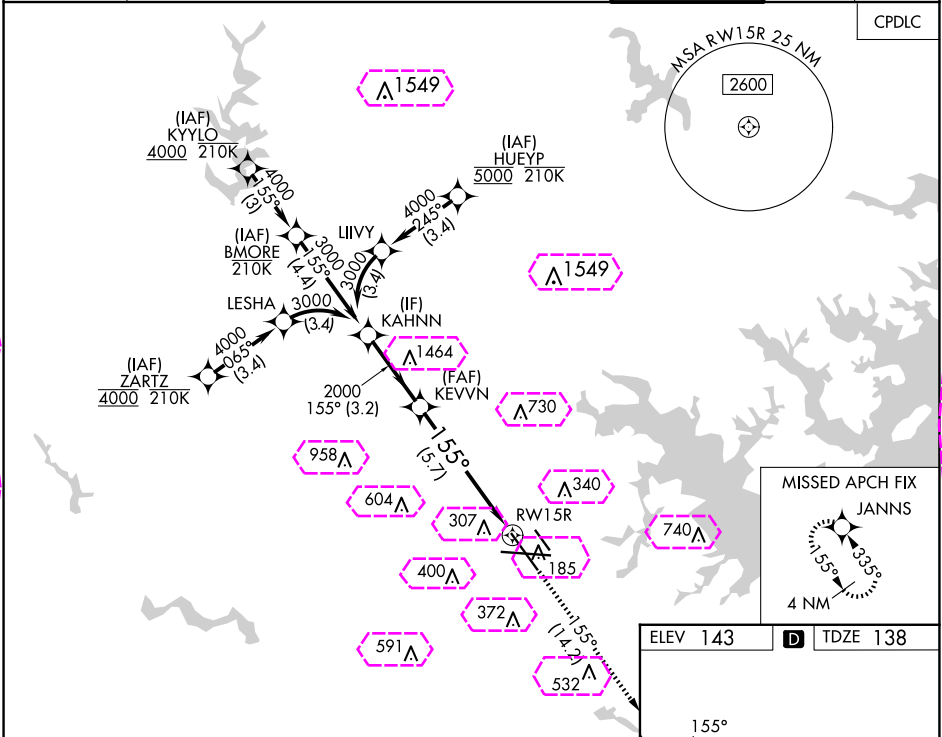
APP CRS	Rwy Ldg	8301
155°	TDZE	138
	Apt Elev	143

# RNAV (RNP) Z RWY 15R

BALTIMORE/WASHINGTON INTL THURGOOD MARSHALL (BWI)

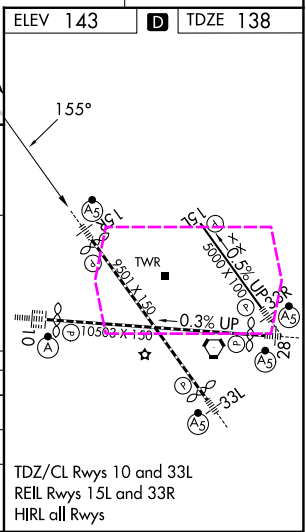
RNP AR APCH - GPS.	MALSR	MISSED APPROACH: Climb to 2500 on track 155° to JANNS and hold.
▼ For uncompensated Baro-VNAV systems, procedure NA below -11°C or above 54°C. Simultaneous approach authorized with Rwy 15L. For inop ALS, increase RNP 0.11 DA all Cats visibility to RVR 5500.		

D-ATIS	POTOMAC APP CON	BALTIMORE TOWER	GND CON	CLNC DEL
115.1 127.8	119.0 282.275 (020°-100°) 119.7 290.475 (131°-180°) 124.55 317.425 (101°-130°) 128.7 307.9 (181°-019°)	119.4 257.8	121.9	118.05



CATEGORY	A	B	C	D
RNP 0.11 DA		513/35	375 (400-5%)	
RNP 0.30 DA		587/45	449 (500-7%)	

**AUTHORIZATION REQUIRED**



BALTIMORE, MARYLAND  
Amdt 2 05SEP24

BALTIMORE/WASHINGTON INTL THURGOOD MARSHALL (BWI)  
39°11'N-76°40'W

**RNAV (RNP) Z RWY 15R**

BALTIMORE, MARYLAND

AL-804 (FAA)

25219

APP CRS	Rwy Ldg	8301
155°	TDZE	138
	Apt Elev	143

# RNAV (RNP) Z RWY 15R

BALTIMORE/WASHINGTON INTL THURGOOD MARSHALL (BWI)

RNP AR APCH - GPS.

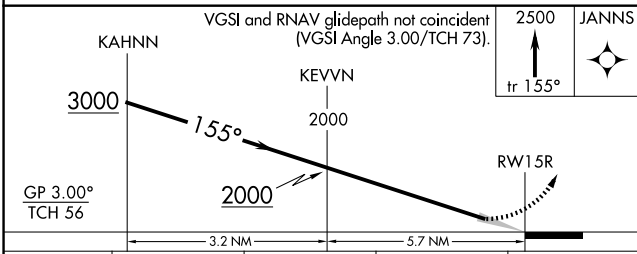
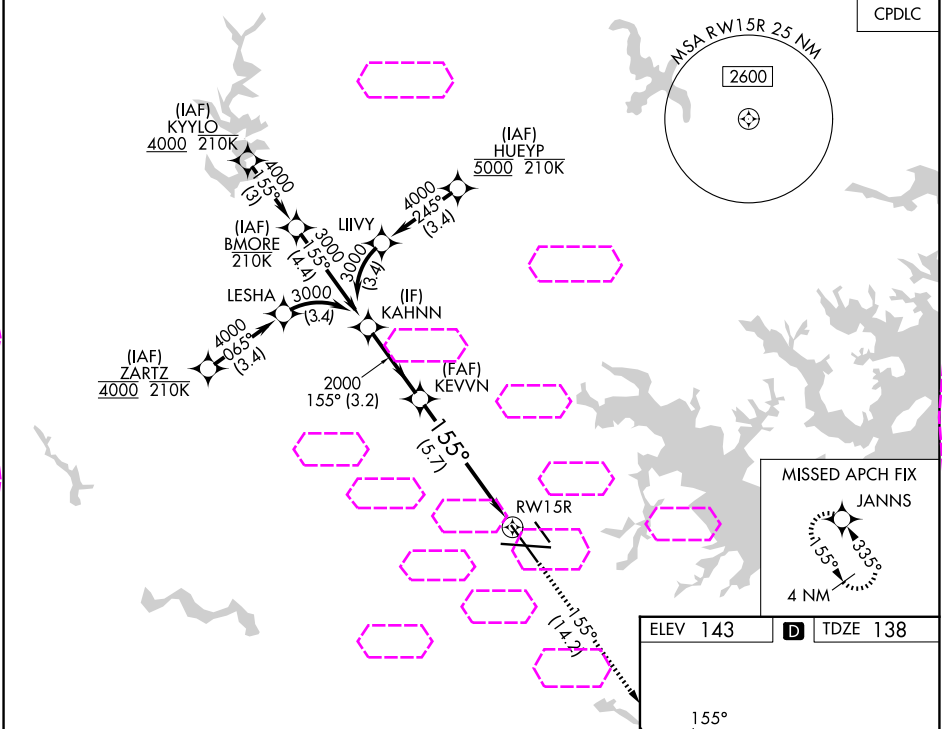
▼ For uncompensated Baro-VNAV systems, procedure NA below -11°C or above 54°C.  
Simultaneous approach authorized with Rwy 15L.  
For inop ALS, increase RNP 0.11 DA all Cats visibility to RVR 5500.

MALSR

MISSED APPROACH: Climb to 2500 on track 155° to JANNIS and hold.

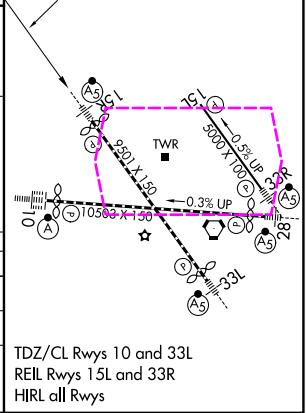
D-ATIS	POTOMAC APP CON	BALTIMORE TOWER	GND CON	CLNC DEL
115.1 127.8	119.0 282.275 (020°-100°) 119.7 290.475 (131°-180°) 124.55 317.425 (101°-130°) 128.7 307.9 (181°-019°)	119.4 257.8	121.9	118.05

CPDLC



CATEGORY	A	B	C	D
RNP 0.11 DA		513/35	375 (400-5%)	
RNP 0.30 DA		587/45	449 (500-7%)	

AUTHORIZATION REQUIRED



BALTIMORE, MARYLAND  
Amdt 2 05SEP24

BALTIMORE/WASHINGTON INTL THURGOOD MARSHALL (BWI)  
39°11'N-76°40'W

# RNAV (RNP) Z RWY 15R