

BALTIMORE, MARYLAND

AL-804 (FAA)

25163

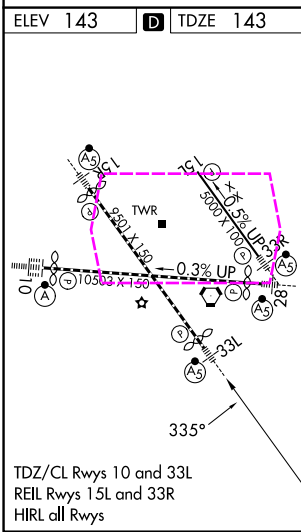
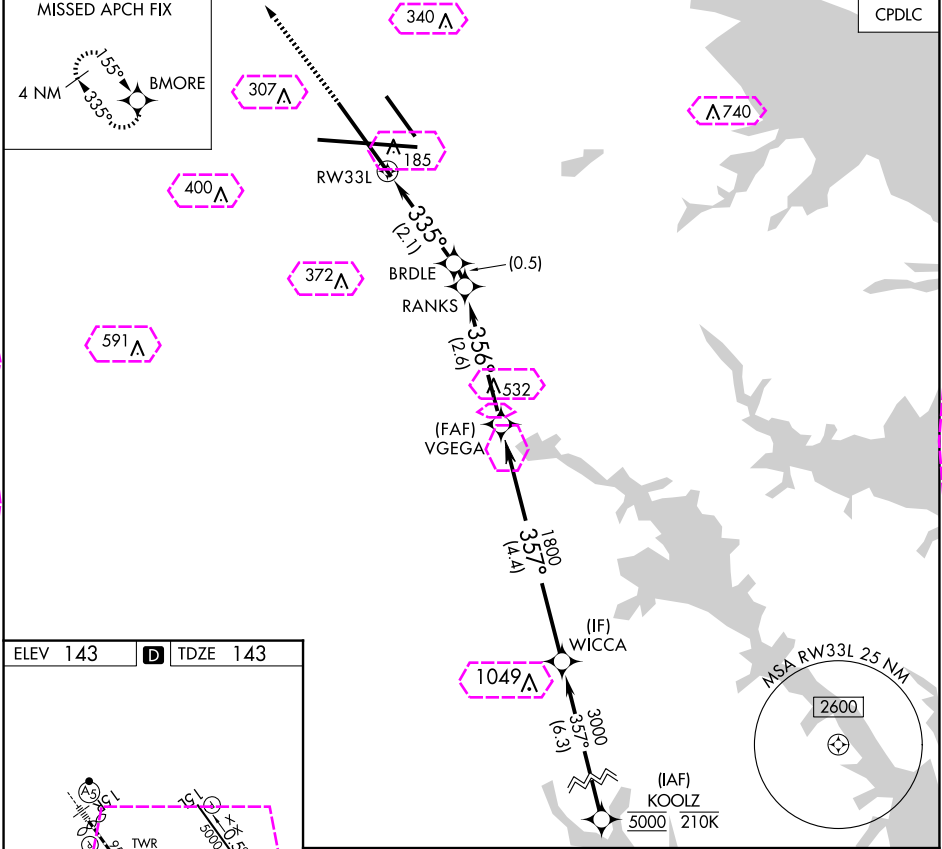
APP CRS	Rwy Ldg	8301
335°	TDZE	143
	Apt Elev	143



RNAV (RNP) X RWY 33L

BALTIMORE/WASHINGTON INTL THURGOOD MARSHALL (BWI)

RNP AR APCH - GPS, RF.	MAISR	MISSED APPROACH: Climb to 3000 direct BMORE and hold.
▼ For uncompensated Baro-VNAV systems, procedure NA below -11°C or above 54°C.		

D-ATIS	POTOMAC APP CON	BALTIMORE TOWER	GND CON	CLNC DEL
115.1 127.8	(020°-100°) 119.7 290.475 (131°-180°) (101°-130°) 128.7 307.9 (181°-019°)	119.4 257.8	121.9	118.05
124.55 317.425				



3000 ↑	BMORE 	VGSI and RNAV glidepath not coincident (VGSI Angle 3.00/TCH 72).			WICCA
		BRDLE	RANKS	VEGGA	
		839	986	1800	3000
RW33L 		335°		356°	357°
		2.1 NM		0.5 NM	2.6 NM
					4.4 NM
CATEGORY	A	B	C	D	
RNP 0.30 DA	479/26 336 (400-½)				
AUTHORIZATION REQUIRED					

BALTIMORE, MARYLAND
Orig 05SEP24

BALTIMORE/WASHINGTON INTL THURGOOD MARSHALL (BWI)
39°11'N-76°40'W

RNAV (RNP) X RWY 33L

NE-3, 10 JUL 2025 to 07 AUG 2025

NE-3, 10 JUL 2025 to 07 AUG 2025

BALTIMORE, MARYLAND

AL-804 (FAA)

25219

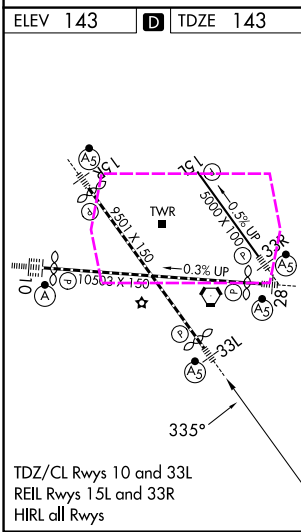
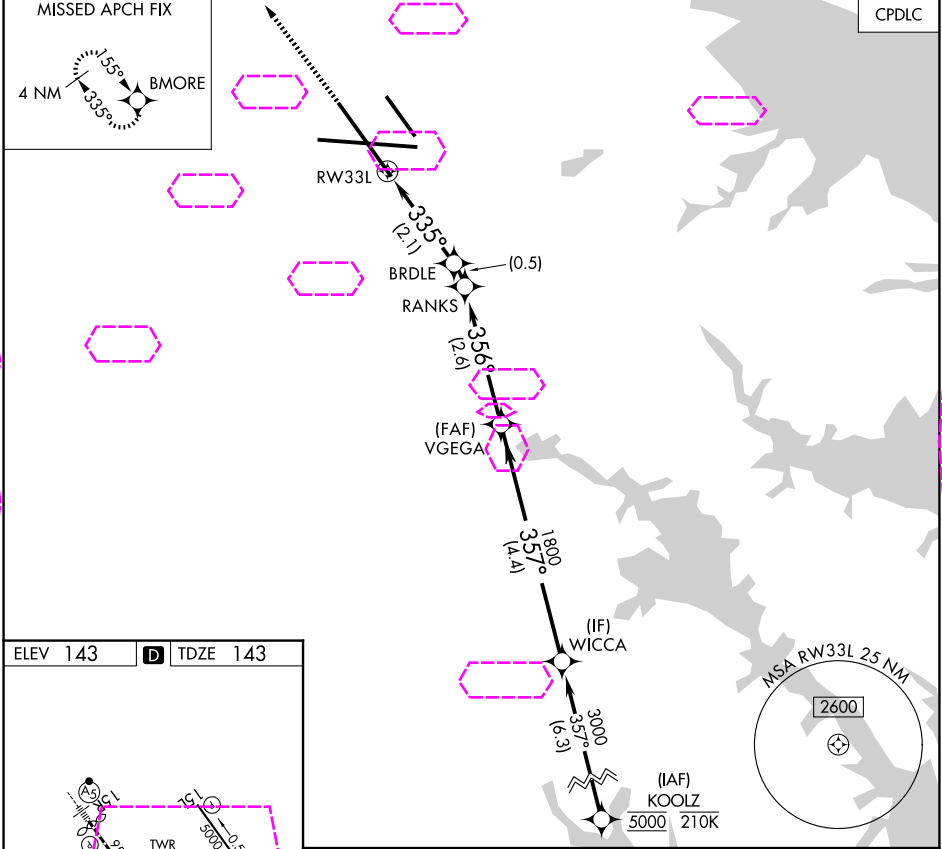
APP CRS	Rwy Ldg	8301
335°	TDZE	143
	Apt Elev	143

RNAV (RNP) X RWY 33L

BALTIMORE/WASHINGTON INTL THURGOOD MARSHALL (BWI)

RNP AR APCH - GPS, RF.	MAISR	MISSED APPROACH: Climb to 3000 direct BMORE and hold.
▼ For uncompensated Baro-VNAV systems, procedure NA below -11°C or above 54°C.		

D-ATIS	POTOMAC APP CON	BALTIMORE TOWER	GND CON	CLNC DEL
115.1 127.8	(020°-100°) 119.7 290.475 (131°-180°) (101°-130°) 128.7 307.9 (181°-019°)	119.4 257.8	121.9	118.05



3000	BMORE	VGSI and RNAV glidepath not coincident (VGSI Angle 3.00/TCH 72).	WICCA
RW33L	BRDLE	RANKS	VEGGA
	839	986	1800
	335°	356°	357°
	2.1 NM	0.5 NM	2.6 NM
CATEGORY	A	B	C
RNP 0.30 DA	479/26	336 (400-1/2)	
AUTHORIZATION REQUIRED			

BALTIMORE, MARYLAND
Orig 05SEP24

BALTIMORE/WASHINGTON INTL THURGOOD MARSHALL (BWI)
39°11'N-76°40'W

RNAV (RNP) X RWY 33L

NE-3, 07 AUG 2025 to 04 SEP 2025

NE-3, 07 AUG 2025 to 04 SEP 2025