

NE-3, 10 JUL 2025 to 07 AUG 2025

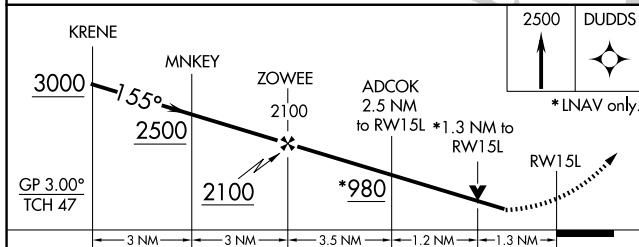
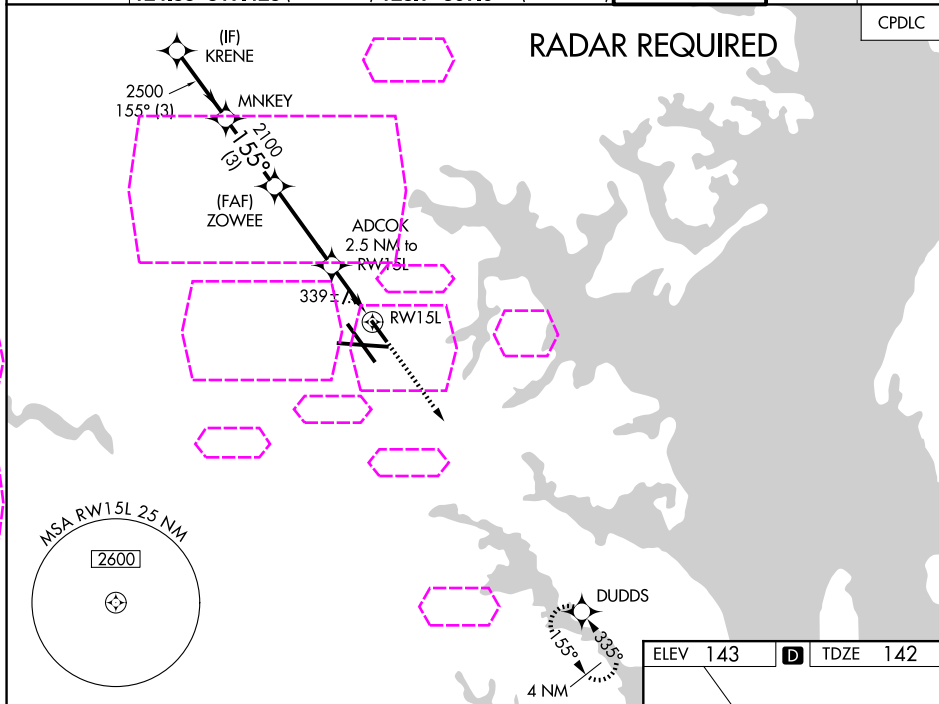
WAAS CH <b>40108</b> <b>W15A</b>	APP CRS <b>155°</b>	Rwy Ldg TDZE Apt Elev	<b>5000</b> <b>142</b> <b>143</b>
--	------------------------	-----------------------------	---

BALTIMORE/ WASHINGTON INTL THURGOOD MARSHALL (BWI) RNAV (GPS) RWY 15L

▼ For uncompensated Baro-VNAV systems, LNAV/VNAV NA below -13°C (9°F) or above 54°C (130°F). DME/DME RNP-0.3 NA. Helicopter visibility reduction below RVR 4000 NA. Simultaneous approach authorized. Use of FD or AP providing RNAV track guidance required during simultaneous operations. LNAV procedure NA during simultaneous operations.

**MISSED APPROACH:**  
Climb to 2500 direct  
DUDDS and hold.

D-ATIS		POTOMAC APP CON				BALTIMORE TOWER	GND CON	CLNC DEL
115.1	127.8	119.0	282.275	(020°-100°)	119.7	290.475 (131°-180°)	119.4	257.8
		124.55	317.425	(101°-130°)	128.7	307.9 (181°-019°)	121.9	118.05



CATEGORY	A	B	C	D
LPV DA	544-1 $\frac{3}{8}$	402 (500-1 $\frac{3}{8}$ )	NA	
LNAV/ VNAV DA	656-1 $\frac{3}{4}$	514 (600-1 $\frac{3}{4}$ )	NA	
LNAV MDA	600/55	458 (500-1)	NA	
CIRCLING	640-1 497 (500-1)	660-1 517 (600-1)	NA	

