

LOC I-RUX <b>111.7</b>	APP CRS <b>335°</b>	Rwy Ldg TDZE Apt Elev	<b>8301</b> <b>143</b> <b>143</b>
---------------------------	------------------------	-----------------------------	-----------------------------------------

BALTIMORE/ ILS or LOC RWY 33L  
WASHINGTON INTL THURGOOD MARSHALL (BWI)

RNP APCH - GPS. From KOOLZ

RADAR required for procedure entry. DME or RADAR required.

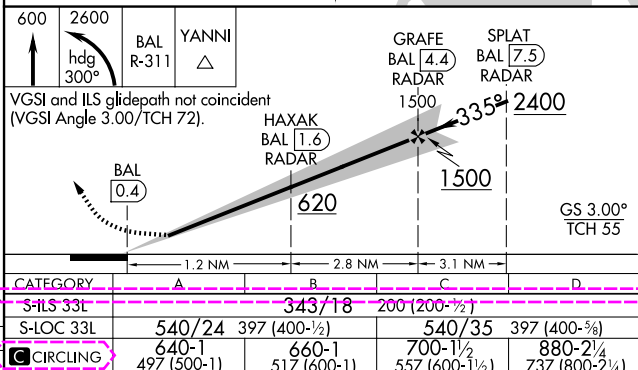
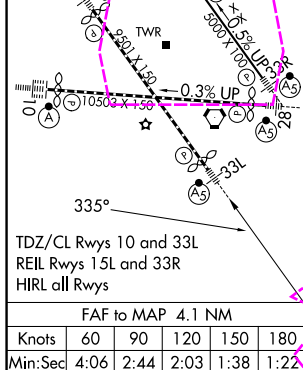
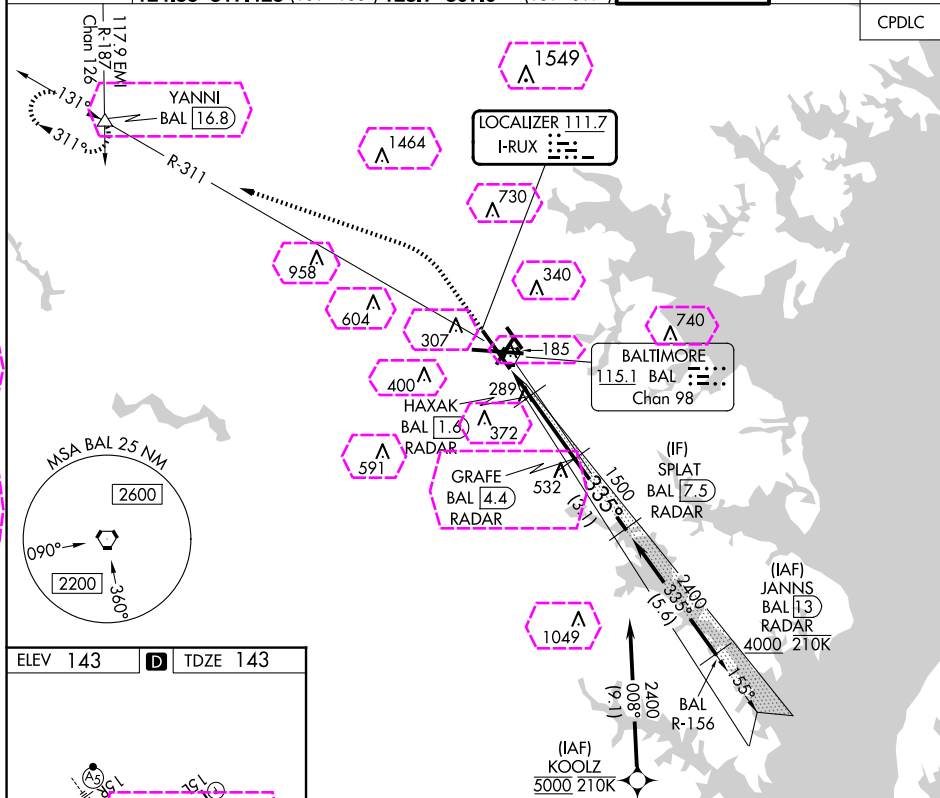
**T** Simultaneous approach authorized with ILS or LOC Rwy 33R. DME from BAL  
**A** VORTAC. DME use requires simultaneous reception of I-RUX and BAL DME.

MALSR

**MISSED APPROACH:** Climb to 600 then climbing left turn to 2600 on heading 300° and BAL VORTAC R-311 to YANNI INT/BAL 16.8 DME and hold.

D-ATIS	POTOMAC APP CON				BALTIMORE TOWER	GND CON	CLNC DEL
115.1 127.8	119.0 282.275	(020°-130°)	119.7 290.475	(131°-180°)	119.4 257.8	121.9	118.05
	124.55 317.425	(101°-100°)	128.7 307.9	(181°-019°)			

CPDLC



BALTIMORE, MARYLAND  
Amdt 13 05SEP24

BALTIMORE/WASHINGTON INTL THURGOOD MARSHALL (BWI)  
39°11'N-76°40'W ILS - LOC RWY 22L

ILS or LOC RWY 33L

NE-3, 10 JUL 2025 to 07 AUG 2025

NE-3, 10 JUL 2025 to 07 AUG 2025

BALTIMORE, MARYLAND

AL-804 (FAA)

25219

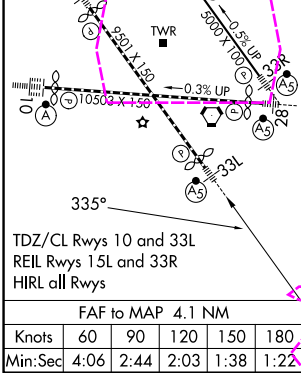
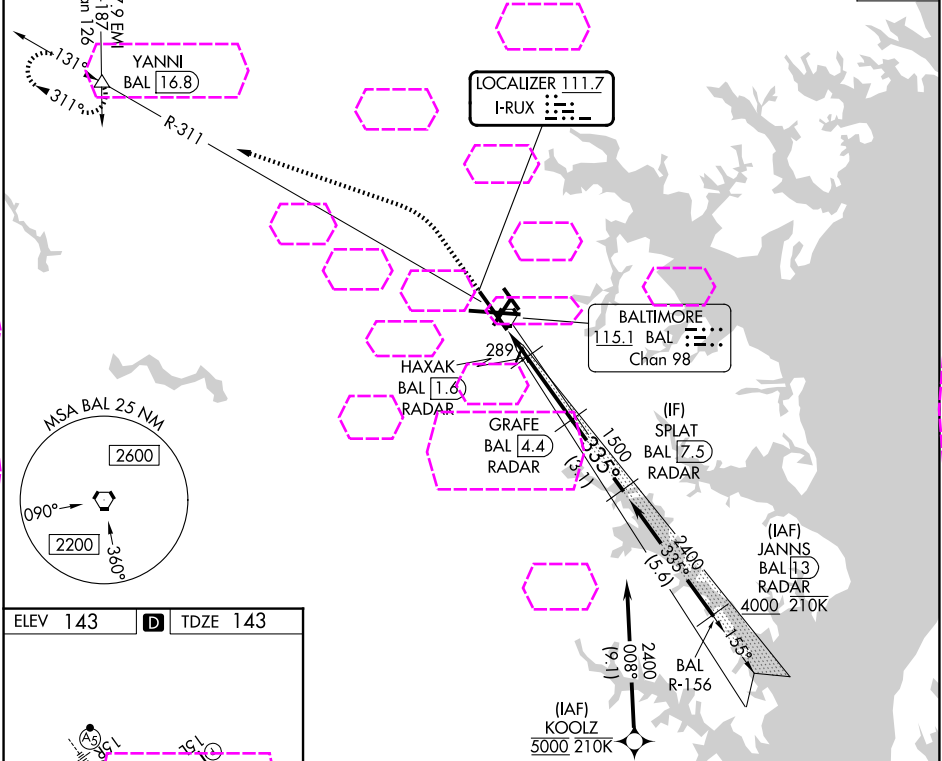
LOC I-RUX <b>111.7</b>	APP CRS <b>335°</b>	Rwy Ldg TDZE Apt Elev	<b>8301</b> <b>143</b> <b>143</b>
---------------------------	------------------------	-----------------------------	-----------------------------------------

BALTIMORE/  
WASHINGTON INTL THURGOOD MARSHALL (BWI)

# ILS or LOC RWY 33L

RNP APCH - GPS. From KOOLZ.  
RADAR required for procedure entry. DME or RADAR required.  
Simultaneous approach authorized with ILS or LOC Rwy 33R. DME from BAL VORTAC. DME use requires simultaneous reception of I-RUX and BAL DME.

D-ATIS <b>115.1 127.8</b>	POTOMAC APP CON <b>119.0 282.275</b> (020°-100°) <b>124.55 317.425</b> (101°-130°)	<b>119.7 290.475</b> (131°-180°) <b>128.7 307.9</b> (181°-019°)	BALTIMORE TOWER <b>119.4 257.8</b>	GND CON <b>121.9</b>	CLNC DEL <b>118.05</b>
------------------------------	------------------------------------------------------------------------------------------	--------------------------------------------------------------------	---------------------------------------	-------------------------	---------------------------



600	2600	BAL R-311	YANNI	GRAFE BAL 4.4 RADAR	SPLAT BAL 7.5 RADAR	2400
↑	hdg 300°	△	△	1500	1500	335°
VGSI and ILS glidepath not coincident (VGSI Angle 3.00/TCH 72).						
BAL 0.4						
HAXAK BAL 1.6 RADAR						
620						
1500						
GS 3.00° TCH 55						
1.2 NM 2.8 NM 3.1 NM						
CATEGORY	A	B	C	D		
S-ILS 33L	343/18 200 (200-½)					
S-LOC 33L	540/24	397 (400-½)	540/35	397 (400-¾)		
CIRCLING	640-1	660-1	700-1½	880-2¼		
	497 (500-1)	517 (600-1)	557 (600-1½)	737 (800-2¼)		

BALTIMORE, MARYLAND  
Amdt 13 05SEP24

BALTIMORE/WASHINGTON INTL THURGOOD MARSHALL (BWI)  
39°11'N-76°40'W

# ILS or LOC RWY 33L

NE-3, 07 AUG 2025 to 04 SEP 2025

NE-3, 07 AUG 2025 to 04 SEP 2025