

BALTIMORE, MARYLAND

AL-804 (FAA)

25163

| | | | |
|-----------|---------|----------|------|
| LOC I-OFH | APP CRS | Rwy Ldg | 9803 |
| 109.7 | 285° | TDZE | 143 |
| | | Apt Elev | 143 |

BALTIMORE/ ILS or LOC RWY 28
WASHINGTON INTL THURGOOD MARSHALL (BWI)

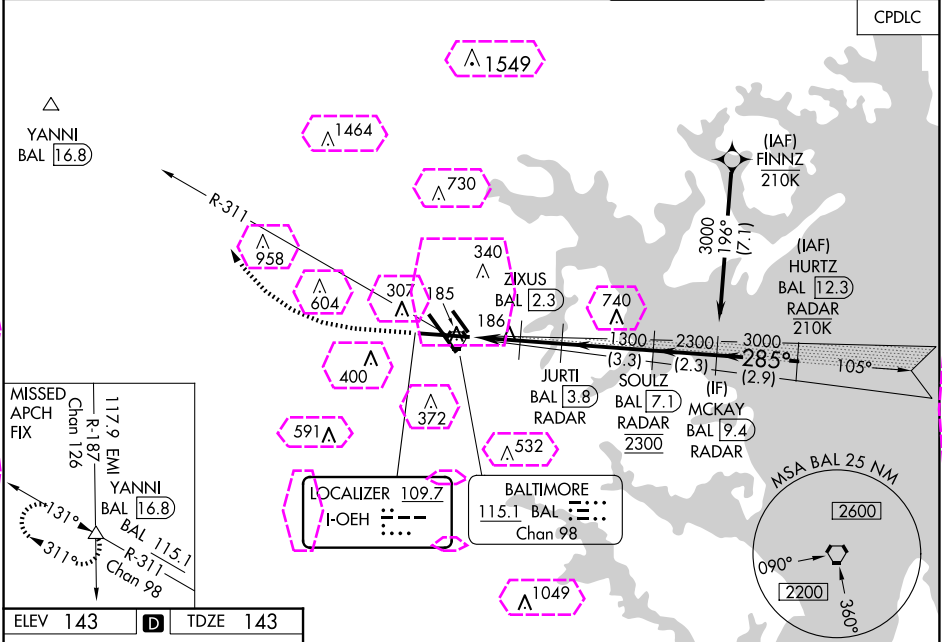
DME or RADAR required.

▼ For inop ALS, increase S-LOC 28 Cat C/D visibility to 1 3/4 SM and increase ZIXUS fix S-LOC 28 Cat C/D visibility to RVR 4500.
▲ *RVR 1800 authorized with use of FD or AP or HUD to DA.

MALSR

MISSED APPROACH: Climb to 1500 then climbing right turn to 2600 on heading 319° and BAL VORTAC R-311 to YANNI INT/ BAL 16.8 DME and hold.

| | | | | |
|-------------|---|-----------------|---------|----------|
| D-ATIS | POTOMAC APP CON | BALTIMORE TOWER | GND CON | CLNC DEL |
| 115.1 127.8 | 119.0 282.275 (020°-100°) 119.7 290.475 (131°-180°) 124.55 317.425 (101°-130°) 128.7 307.9 (181°-019°) | 119.4 257.8 | 121.9 | 118.05 |



| | | |
|----------|---|----------|
| ELEV 143 | D | TDZE 143 |
|----------|---|----------|

TDZ/CL Rwy 10 and 33L
REIL Rwy 15L and 33R
HIRL all Rwy

FAF to MAP 3.5 NM

| | | | | | |
|---------|------|------|------|------|------|
| Knots | 60 | 90 | 120 | 150 | 180 |
| Min:Sec | 3:30 | 2:20 | 1:45 | 1:24 | 1:10 |

| | | | | | |
|--|------|-----------|-------|---|-----------------------|
| 1500 | 2600 | BAL R-311 | YANNI | VGSI and ILS glidepath not coincident (VGSI Angle 3.00/TCH 75). | MCKAY BAL [9.4] RADAR |
| | | | | | |
| CATEGORY A B C D | | | | | |
| S-ILS 28 * 343/24 200 (200-1/2) | | | | | |
| S-LOC 28 620/24 477 (500-1/2) 620/50 477 (500-1) | | | | | |
| C CIRCLING 660-1 517 (600-1) 700-1 557 (600-1 1/2) 880-2 737 (800-2 1/4) | | | | | |
| ZIXUS FIX MINIMUMS (DME REQUIRED) | | | | | |
| S-LOC 28 460/24 317 (400-1/2) | | | | | |
| C CIRCLING 660-1 517 (600-1) 700-1 557 (600-1 1/2) 880-2 737 (800-2 1/4) | | | | | |

BALTIMORE, MARYLAND
Amdt 18 05SEP24

BALTIMORE/WASHINGTON INTL THURGOOD MARSHALL (BWI)
39°11'N-76°40'W
ILS or LOC RWY 28

NE-3, 10 JUL 2025 to 07 AUG 2025

NE-3, 10 JUL 2025 to 07 AUG 2025

NE-3, 07 AUG 2025 to 04 SEP 2025