

BALTIMORE, MARYLAND

AL-804 (FAA)

25163

LOC I-FND	APP CRS	Rwy Ldg	8301
111.7	155°	TDZE	138
		Apt Elev	143

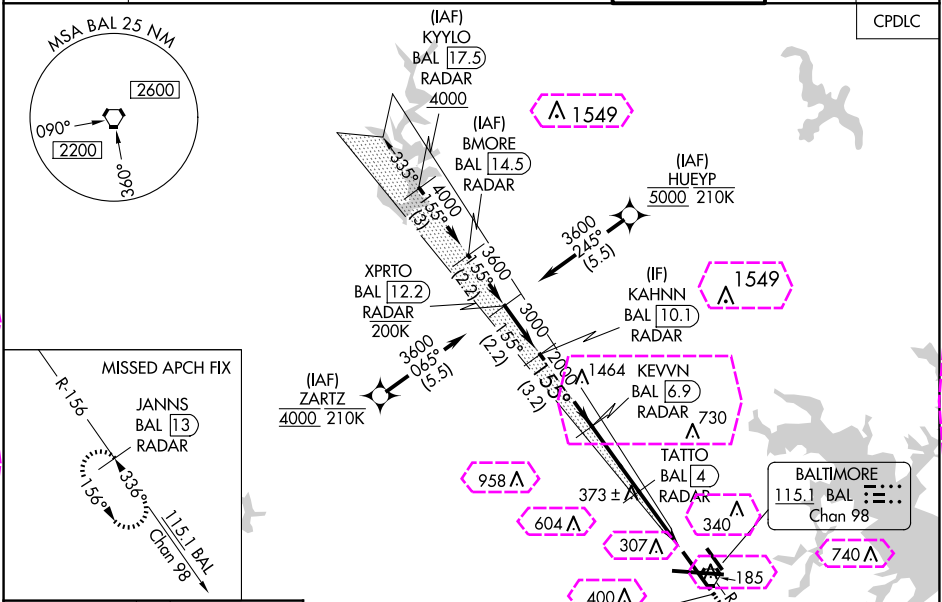
BALTIMORE/ WASHINGTON INTL THURGOOD MARSHALL (BWI) ILS or LOC RWY 15R

RNP APCH - GPS. From HUEYP or ZARTZ.  
DME or RADAR required. RADAR required for procedure entry at KYILO or BMORE.

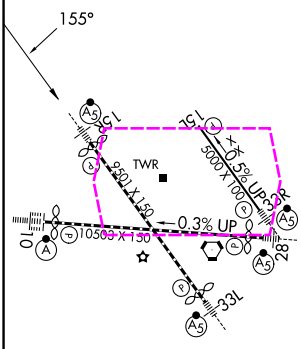
Simultaneous approach authorized with Rwy 15L. DME from BAL VORTAC.  
For inop ALS, increase LOC Cat C/D visibility to 1½ SM.  
\* RVR 1800 authorized with use of FD or AP or HUD to DA.

MALSR  
MISSED APPROACH: Climb to 2500 on BAL VORTAC R-156 to JANNNS/BAL 13 DME/RADAR and hold.

D-ATIS	POTOMAC APP CON	BALTIMORE TOWER	GND CON	CLNC DEL
115.1 127.8	119.0 282.275 (020°-100°) 119.7 290.475 (131°-180°) 124.55 317.425 (101°-130°) 128.7 307.9 (181°-019°)	119.4 257.8	121.9	118.05



ELEV 143	TDZE 138
----------	----------



TDZ/CL Rwy 10 and 33L	REIL Rwy 15L and 33R	HIRL all Rwy
FAF to MAP 5.7 NM		
Knots	60	90 120 150 180
Min:Sec	5:42	3:48 2:51 2:17 1:54

VGSi and ILS glidepath not coincident (VGSi Angle 3.00/TCH 73).			
KHAHNN BAL [10.1] RADAR			
KEVNN BAL [6.9] RADAR			
TATTO BAL [4] RADAR			
BAL [2.6] BAL [1.2]			
GS 3.00° TCH 56			
3000 2000 1080			
3.2 NM 2.9 NM 1.4 NM 1.3			
CATEGORY	A	B	C
S-ILS 15R*	338/24 200 (200-½)		
S-LOC 15R	640/24	502 (500-½)	640/55 502 (500-1)
CIRCLING	640-1 497 (500-1)	660-1 517 (600-1)	700-1½ 557 (600-1½) 880-2¼ 737 (800-2¼)

BALTIMORE, MARYLAND  
Amdt 17 05SEP24

BALTIMORE/WASHINGTON INTL THURGOOD MARSHALL (BWI)  
39°11'N-76°40'W  
ILS or LOC RWY 15R

NE-3, 10 JUL 2025 to 07 AUG 2025

NE-3, 10 JUL 2025 to 07 AUG 2025

BALTIMORE, MARYLAND

AL-804 (FAA)

25219

LOC I-FND <b>111.7</b>	APP CRS <b>155°</b>	Rwy Ldg 8301
		TDZE <b>138</b>
		Apt Elev <b>143</b>

BALTIMORE/ WASHINGTON INTL THURGOOD MARSHALL (BWI)  
**ILS or LOC RWY 15R**

RNP APCH - GPS. From HUEYP or ZARTZ.

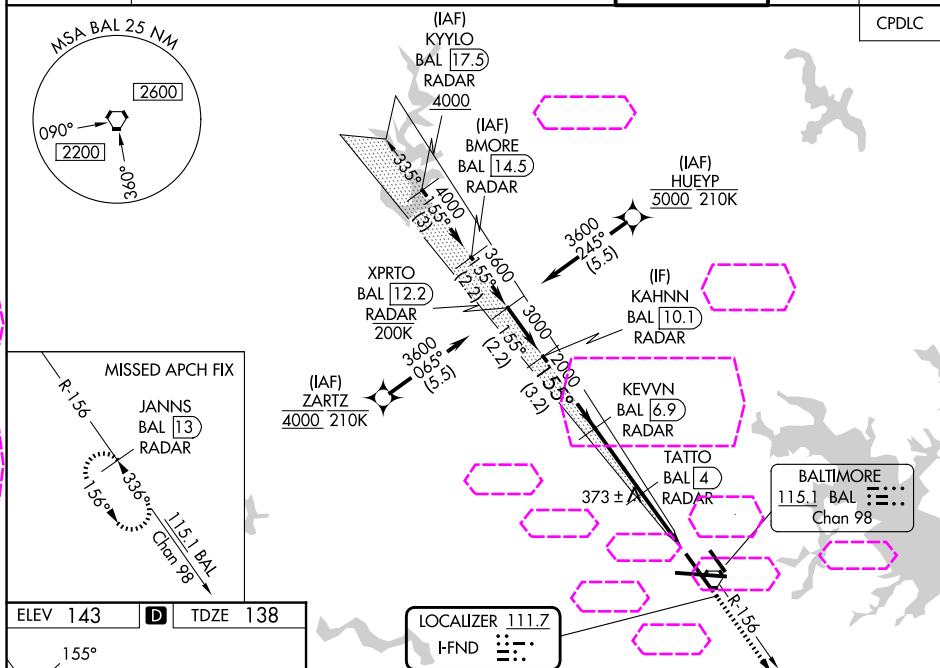
DME or RADAR required. RADAR required for procedure entry at KYILO or BMORE.

- Simultaneous approach authorized with Rwy 15L. DME from BAL VORTAC.  
 For inop ALS, increase LOC Cat C/D visibility to 1½ SM.  
 \* RVR 1800 authorized with use of FD or AP or HUD to DA.

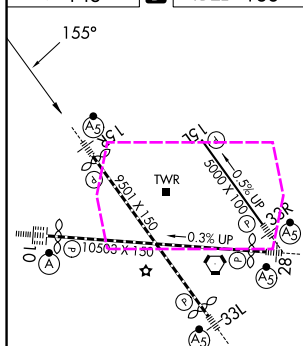


MISSED APPROACH: Climb to 2500 on BAL VORTAC R-156 to JANNIS/BAL 13 DME/RADAR and hold.

D-ATIS <b>115.1 127.8</b>	POTOMAC APP CON (020°-100°) <b>119.0 282.275</b> (101°-130°) <b>124.55 317.425</b>	(131°-180°) <b>119.7 290.475</b> (181°-019°) <b>128.7 307.9</b>	BALTIMORE TOWER <b>119.4 257.8</b>	GND CON <b>121.9</b>	CLNC DEL <b>118.05</b>
------------------------------	--	--	---------------------------------------	-------------------------	---------------------------



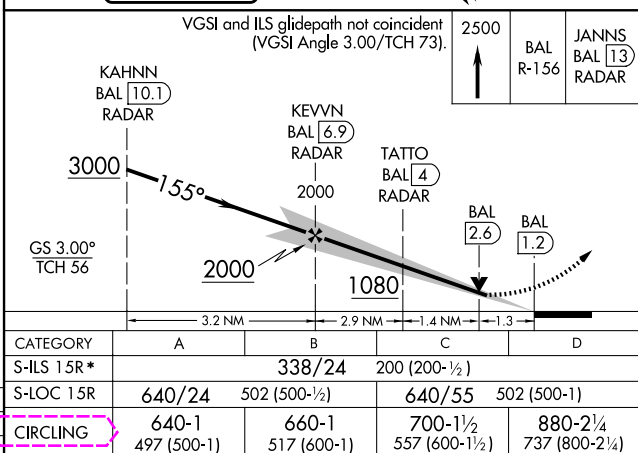
ELEV 143	D	TDZE 138
----------	---	----------



TDZ/CL Rwy 10 and 33L  
 REIL Rwy 15L and 33R  
 HIRL all Rwy

FAF to MAP 5.7 NM

Knots	60	90	120	150	180
Min:Sec	5:42	3:48	2:51	2:17	1:54



BALTIMORE, MARYLAND

Amdt 17 05SEP24

BALTIMORE/WASHINGTON INTL THURGOOD MARSHALL (BWI)

39°11'N-76°40'W

**ILS or LOC RWY 15R**

NE-3, 07 AUG 2025 to 04 SEP 2025

NE-3, 07 AUG 2025 to 04 SEP 2025