

BALTIMORE, MARYLAND

AL-804 (FAA)

25163

LOC I-BAL 109.7	APP CRS 105°	Rwy Ldg TDZE Apt Elev	9953 143 143
---------------------------	------------------------	-----------------------------	---

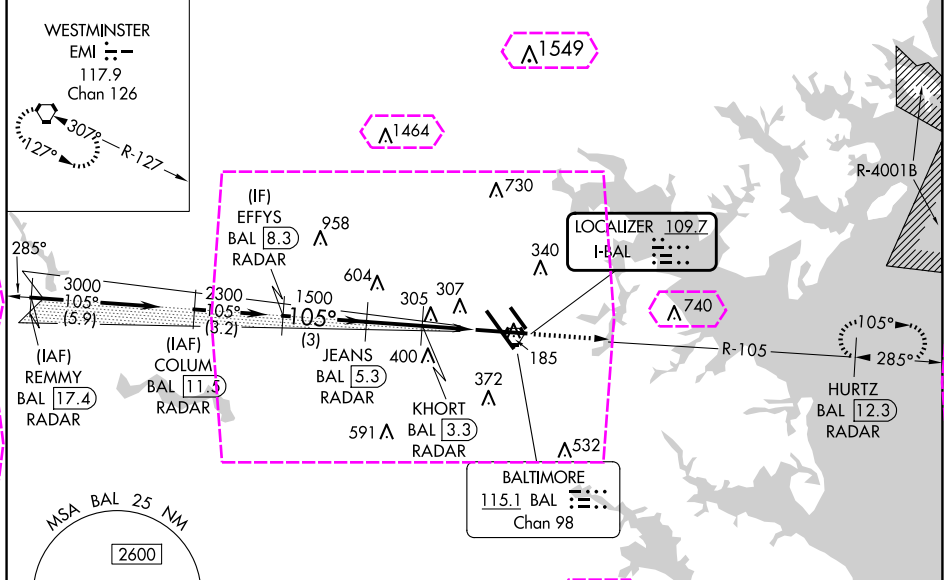
BALTIMORE/
WASHINGTON INTL THURGOOD MARSHALL (BWI)

ILS or LOC RWY 10

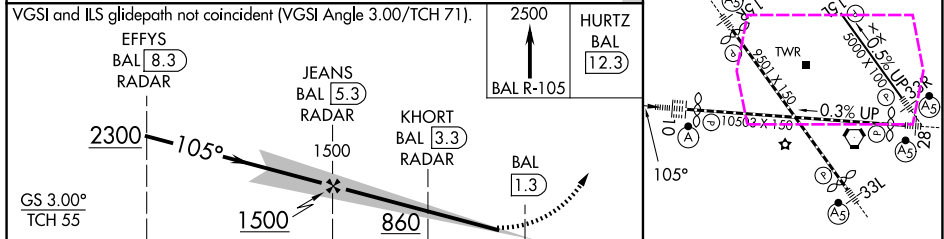
RADAR required for procedure entry. DME or RADAR required.	ALSF-2 	MISSED APPROACH: Climb to 2500 on BAL VORTAC R-105 to HURTZ/BAL 12.3 DME/RADAR and hold.
---	------------	---

D-ATIS 115.1 127.8	POTOMAC APP CON 119.0 282.275 (020°-100°) 119.7 290.475 (131°-180°) 124.55 317.425 (101°-130°) 128.7 307.9 (181°-019°)	BALTIMORE TOWER 119.4 257.8	GND CON 121.9	CLNC DEL 118.05
------------------------------	--	---------------------------------------	-------------------------	---------------------------

ALTERNATE MISSED APCH FIX	CPDLC
------------------------------	-------



MSA BAL 25 NM 2600 2200	BALTIMORE 115.1 BAL Chan 98	ELEV 143 D TDZE 143
-----------------------------------	--	----------------------------



CATEGORY	A	B	C	D
S-ILS 10		343/18	200 (200-½)	
S-LOC 10	580/24	437 (500-½)	580/40	437 (500-¾)
CIRCLING	640-1 497 (500-1)	660-1 517 (600-1)	700-1½ 557 (600-1½)	880-2¼ 737 (800-2¼)

TDZ/CL Rwy 10 and 33L
REIL Rwy 15L and 33R
HIRL all Rwy

FAF to MAP 4.1 NM

Knots	60	90	120	150	180
Min:Sec	4:06	2:44	2:03	1:38	1:22

