

BALTIMORE, MARYLAND

AL-804 (FAA)

25163

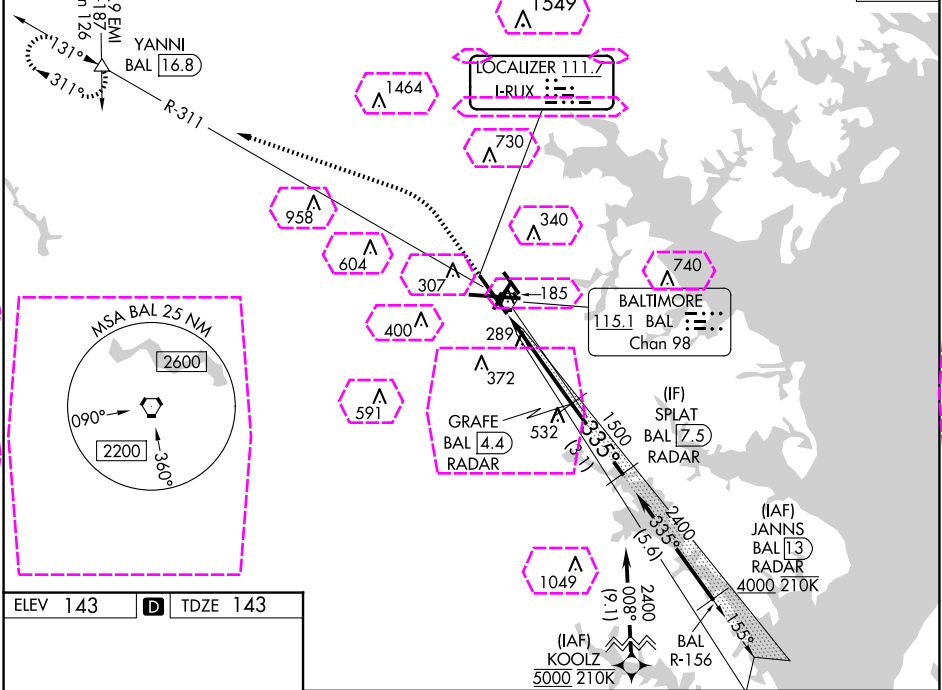
LOC I-RUX 111.7	APP CRS 335°	Rwy Ldg TDZE 143 Apt Elev 143
---------------------------	------------------------	---

ILS RWY 33L (SA CAT I & II)

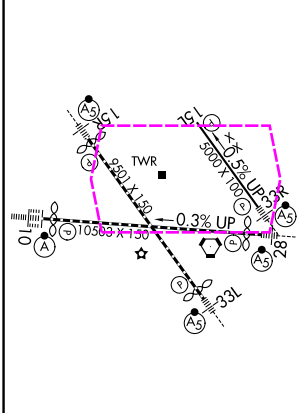
BALTIMORE/WASHINGTON INTL THURGOOD MARSHALL (BWI)

RNP APCH - GPS, From KOOLZ	MALSR	MISSED APPROACH: Climb to 600 then climbing left turn to 2600 on heading 300° and BAL VORTAC R-311 to YANNI INT/ BAL 16.8 DME and hold.
RADAR required for procedure entry. DME or RADAR required.		
Simultaneous approach authorized with ILS or LOC Rwy 33R. DME from BAL VORTAC. DME use requires simultaneous reception of I-RUX and BAL DME. SA Cat I & II: Requires specific OPSPEC, MSPEC, or LOA approval.		

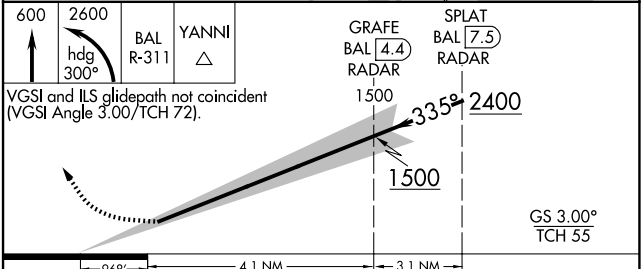
D-ATIS 115.1 127.8	POTOMAC APP CON 119.0 282.275 (020°-100°) 119.7 290.475 (131°-180°) 124.55 317.425 (101°-130°) 128.7 307.9 (181°-019°)	BALTIMORE TOWER 119.4 257.8	GND CON 121.9	CLNC DEL 118.05
				CPDLC



ELEV 143	D	TDZE 143
-----------------	----------	-----------------



TDZ/CL Rwy 10 and 33L
REIL Rwy 15L and 33R
HIRL all Rwy



CATEGORY	A	B	C	D
S-ILS 33L	SA CAT I RA 185/14	150	DA 293	
S-ILS 33L	SA CAT II RA 128/12	100	DA 243	

SA CATEGORY I & II ILS - SPECIAL AIRCREW & AIRCRAFT CERTIFICATION REQUIRED

BALTIMORE, MARYLAND
Amdt 13 05SEP24

BALTIMORE/WASHINGTON INTL THURGOOD MARSHALL (BWI)
39°11'N-76°40'W

ILS RWY 33L (SA CAT I & II)

NE-3, 10 JUL 2025 to 07 AUG 2025

BALTIMORE, MARYLAND

AL-804 (FAA)

25219

LOC I-RUX 111.7	APP CRS 335°	Rwy Ldg TDZE 143 Apt Elev 143
---------------------------	------------------------	---

ILS RWY 33L (SA CAT I & II)

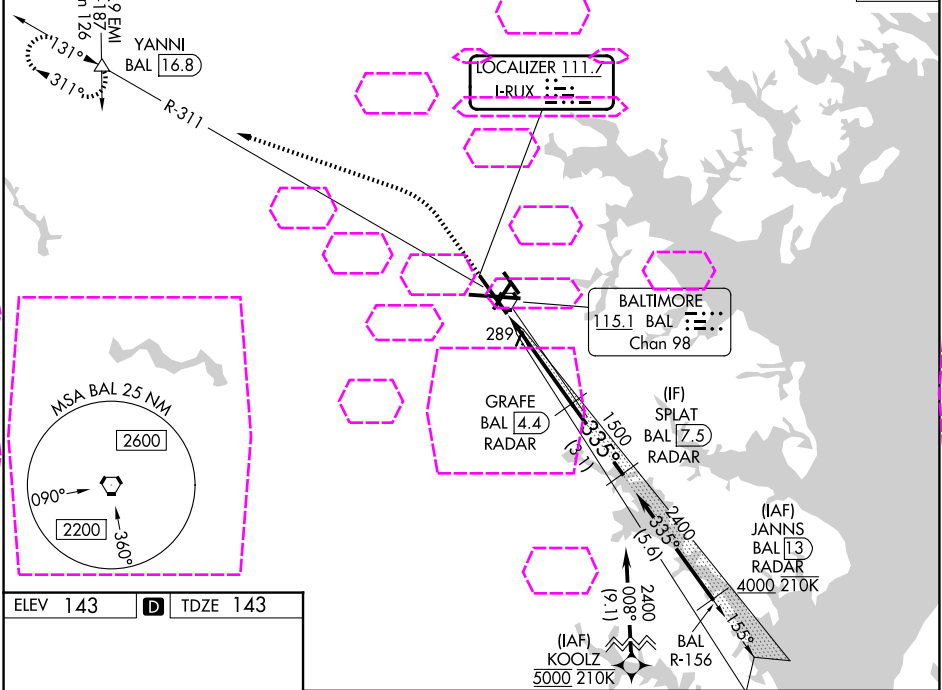
BALTIMORE/WASHINGTON INTL THURGOOD MARSHALL (BWI)

RNP APCH - GPS, From KOOLZ.
RADAR required for procedure entry. DME or RADAR required.

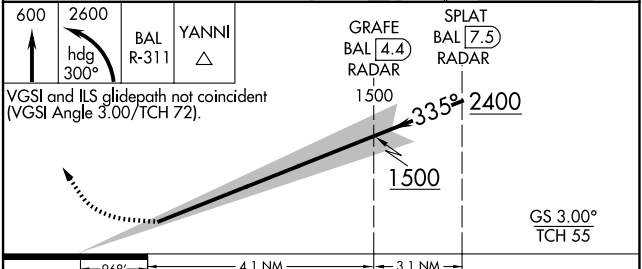
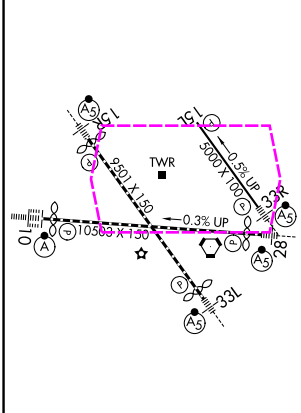
Simultaneous approach authorized with ILS or LOC Rwy 33R. DME from BAL VORTAC. DME use requires simultaneous reception of I-RUX and BAL DME. SA Cat I & II: Requires specific OPSPEC, MSPEC, or LOA approval.

MALSR
MISSED APPROACH: Climb to 600 then climbing left turn to 2600 on heading 300° and BAL VORTAC R-311 to YANNI INT/ BAL 16.8 DME and hold.

D-ATIS 115.1 127.8	POTOMAC APP CON 119.0 282.275 (020°-100°) 119.7 290.475 (131°-180°) 124.55 317.425 (101°-130°) 128.7 307.9 (181°-019°)	BALTIMORE TOWER 119.4 257.8	GND CON 121.9	CLNC DEL 118.05
CPDLC				



ELEV 143	D	TDZE 143
-----------------	----------	-----------------



CATEGORY	A	B	C	D
S-ILS 33L	SA CAT I RA 185/14 150 DA 293			
S-ILS 33L	SA CAT II RA 128/12 100 DA 243			

SA CATEGORY I & II ILS - SPECIAL AIRCREW & AIRCRAFT CERTIFICATION REQUIRED

BALTIMORE, MARYLAND
Amdt 13 05SEP24

BALTIMORE/WASHINGTON INTL THURGOOD MARSHALL (BWI)
39°11'N-76°40'W

ILS RWY 33L (SA CAT I & II)

NE-3, 07 AUG 2025 to 04 SEP 2025

NE-3, 07 AUG 2025 to 04 SEP 2025